

Product Datasheet

CTR2 Antibody **NBP1-05199SS**

Unit Size: 0.025 ml

Store at 4C short term. Aliquot and store at -20C long term. Avoid freeze-thaw cycles.

www.novusbio.com



support@novusbio.com

Publications: 2

Protocols, Publications, Related Products, Reviews, Research Tools and Images at:
www.novusbio.com/NBP1-05199

Updated 6/15/2014 v.20.1

NBP1-05199SS

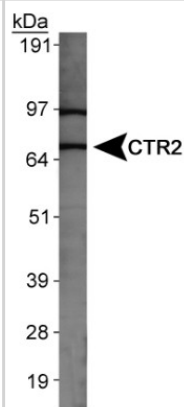
CTR2 Antibody

Product Information	
Unit Size	0.025 ml
Concentration	0.93 mg/ml
Storage	Store at 4C short term. Aliquot and store at -20C long term. Avoid freeze-thaw cycles.
Clonality	Polyclonal
Preservative	0.1% Sodium Azide
Purity	Immunogen affinity purified
Buffer	PBS, 30% glycerol
Target Molecular Weight	71 kDa
Product Description	
Host	Rabbit
Gene ID	1318
Gene Symbol	SLC31A2
Species	Human, Mouse
Species Reactivity	Human and mouse.
Immunogen	Synthetic peptide made to an internal portion of human CTR2 (within residues 50 -100). [Swiss-Prot# O15432]
Product Application Details	
Applications	Western Blot, Simple Western
Recommended Dilutions	Western Blot 1 ug/ml, Simple Western 10 ug/ml
Application Notes	This CTR2 antibody is useful for Western blot, where a band is seen at ~71 kDa. The theoretical molecular weight of CTR2 is 15 kDa. The difference between the expected size and the observed size in Western blot is believed to be due to a multimeric form of CTR2 (Bertinato et al). In Simple Western only 10-15 uL of the recommended dilution is used per data point.



Images

Western Blot: CTR2 Antibody [NBP1-05199] - Detection of CTR2 in MEF cell lysate.



Simple Western: CTR2 Antibody [NBP1-05199] - Simple Western lane view shows a specific band for CTR2 in 0.5 mg/ml of MEF (left) and Human Placenta (right) lysate. This experiment was performed under reducing conditions using the 12-230 kDa separation system.



Publications

Blair BG, Larson CA, Adams PL et al. Copper transporter 2 regulates endocytosis and controls tumor growth and sensitivity to cisplatin in vivo. *Mol Pharmacol*;79(1):157-166. 2011 [PMID: 20930109] (WB, Mouse)

Blair BG et al. Regulation of CTR2 Expression by Copper and Cisplatin in Human Ovarian Carcinoma Cells. *Mol Pharmacol*. 2010 Mar 1. [PMID: 20194531] (WB, Mouse)

Procedures

Protocol specific for CTR2 Antibody (NBP1-05199)

Western Blot Protocol

1. Perform SDS-PAGE (4-12% MOPS) on samples to be analyzed, loading 20 ug of total protein per lane.
2. Transfer proteins to Nitrocellulose according to the instructions provided by the manufacturer of the transfer apparatus.
3. Rinse membrane with dH₂O and then stain the blot using Ponceau S for 1-2 minutes to access the transfer of proteins onto the nitrocellulose membrane. Rinse the blot in water to remove excess stain and mark the lane locations and locations of molecular weight markers using a pencil.
4. Rinse the blot in TBS for approximately 5 minutes.
5. Block the membrane using 5% NFDM + 1% BSA in TBS + Tween, 1 hour at RT.
6. Rinse the membrane in dH₂O and then wash the membrane in wash buffer [TBS + 0.1% Tween] 3 times for 10 minutes each.
7. Dilute the rabbit anti-CTR2 primary antibody (NBP1-05199) in blocking buffer and incubate 1 hour at room temperature.
8. Rinse the membrane in dH₂O and then wash the membrane in wash buffer [TBS + 0.1% Tween] 3 times for 10 minutes each.
9. Apply the diluted rabbit-IgG HRP-conjugated secondary antibody in blocking buffer (as per manufacturers instructions) and incubate 1 hour at room temperature.
10. Wash the blot in wash buffer [TBS + 0.1% Tween] 3 times for 10 minutes each (this step can be repeated as required to reduce background).
11. Apply the detection reagent of choice in accordance with the manufacturers instructions (Pierce ECL).

Note: Tween-20 can be added to the blocking or antibody dilution buffer at a final concentration of 0.05-0.2%, provided it does not interfere with antibody-antigen binding.





Novus Biologicals USA

8100 Southpark Way, A-8
Littleton, CO 80120
USA
Phone: 303.730.1950
Toll Free: 1.888.506.6887
Fax: 303.730.1966
novus@novusbio.com

Novus Biologicals Canada

461 North Service Road West, Unit B37
Oakville, ON L6M 2V5
Canada
Phone: 905.827.6400
Toll Free: 855.668.8722
Fax: 905.827.6402
canada@novusbio.com

Novus Biologicals Europe

19 Barton Lane
Abingdon Science Park
Abingdon, OX14 3NB, United Kingdom
Phone: (44) (0) 1235 529449
Free Phone: 0800 37 34 15
Fax: (44) (0) 1235 533420
info@bio-techne.com

General Contact Information

www.novusbio.com
Technical Support: technical@novusbio.com
Orders: orders@novusbio.com
General: novus@novusbio.com

Limitations

This product is for research use only and is not approved for use in humans or in clinical diagnosis. Primary Antibodies are guaranteed for 1 year from date of receipt.

For more information on our guarantee, please visit www.novusbio.com/guarantee.

