

Product Datasheet

ZEB2 Antibody **NBP1-01005**

Unit Size: 0.1 mg

Store at 4C short term. Aliquot and store at -20C long term. Avoid freeze-thaw cycles.

www.novusbio.com



support@novusbio.com

Publications: 2

Protocols, Publications, Related Products, Reviews, Research Tools and Images at:
www.novusbio.com/NBP1-01005

Updated 12/18/2013 v.20.1

NBP1-01005

ZEB2 Antibody

Product Information	
Unit Size	0.1 mg
Concentration	1.0 mg/ml
Storage	Store at 4C short term. Aliquot and store at -20C long term. Avoid freeze-thaw cycles.
Clonality	Polyclonal
Preservative	0.05% Sodium Azide
Purity	Immunogen affinity purified
Buffer	Phosphate buffered saline, pH 7.2.
Target Molecular Weight	157 kDa kDa
Product Description	
Host	Rabbit
Gene ID	9839
Gene Symbol	ZEB2
Species	Human, Mouse
Species Reactivity	This antibody is reactive against Human, Mouse
Immunogen	Synthetic peptide corresponding to the residues surrounding Glutamate 101 of human SIP1
Product Application Details	
Applications	Western Blot, Immunohistochemistry, Immunohistochemistry-Paraffin
Recommended Dilutions	Western Blot 1:500-1:1000, Immunohistochemistry-Paraffin 1:50-1:200, Immunohistochemistry 1:10-1:2000
Application Notes	Western blot (WB) analysis of SIP1 (E101) pAb in extracts from HepG2 cells. Immunohistochemistry (IHC) analyzes of SIP1 (E101) pAb in paraffin-embedded human brain tissue .

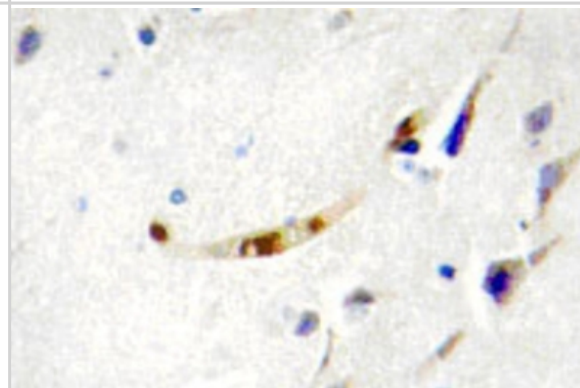
Images

Western Blot: SIP1 Antibody [NBP1-01005] - Western blot (WB) analysis of SIP1 (E101) antibody in extracts from HepG2 cells.



SIP1- -175
-83
-62

Immunohistochemistry: SIP1 Antibody [NBP1-01005] - Immunohistochemistry (IHC) analyzes of SIP1 (E101) antibody in paraffin-embedded human brain tissue



Publications

Wang Z, Yang J, Fisher T et al. Akt activation is responsible for enhanced migratory and invasive behavior of arsenic-transformed human bronchial epithelial cells Environ Health Perspect 2012 Jan [PMID: 21954225] (WB, Human)

Kahlert C, Lahes S, Radhakrishnan P et al. Overexpression of ZEB2 at the invasion front of colorectal cancer is an independent prognostic marker and regulates tumor invasion in vitro. Clinical Cancer Research: An Official Journal of the American Association for Cancer Research. 2011 Oct 31. [PMID: 22042972] (IHC-P, Human)



Novus Biologicals USA

8100 Southpark Way, A-8
Littleton, CO 80120
USA
Phone: 303.730.1950
Toll Free: 1.888.506.6887
Fax: 303.730.1966
novus@novusbio.com

Novus Biologicals Canada

461 North Service Road West, Unit B37
Oakville, ON L6M 2V5
Canada
Phone: 905.827.6400
Toll Free: 855.668.8722
Fax: 905.827.6402
canada@novusbio.com

Novus Biologicals Europe

12 Cambridge Science Park
Cambridge, CB4 0FQ
United Kingdom
Phone: +44 (0)1223 426001
Fax: +44 (0)871 971 1635
europe@novusbio.com

General Contact Information

www.novusbio.com
Technical Support: technical@novusbio.com
Orders: orders@novusbio.com
General: novus@novusbio.com

Products Related to NBP1-01005

NBP1-05987	ZEB1 Antibody
NB200-193	MMP2 Antibody
NB100-1936	SMN Antibody (2B1)
H00009839-R01-20nmol	ZEB2 RNAi

Limitations

This product is for research use only and is not approved for use in humans or in clinical diagnosis. Primary Antibodies are guaranteed for 1 year from date of receipt.

For more information on our guarantee, please visit www.novusbio.com/guarantee.

