

Product Datasheet

Calreticulin Antibody NB600-103SS

Unit Size: 0.025 ml

Store at 4C short term. Aliquot and store at -20C long term. Avoid freeze-thaw cycles.

www.novusbio.com



support@novusbio.com

Reviews: 2 Publications: 3

Protocols, Publications, Related Products, Reviews, Research Tools and Images at:
www.novusbio.com/NB600-103

Updated 6/15/2014 v.20.1

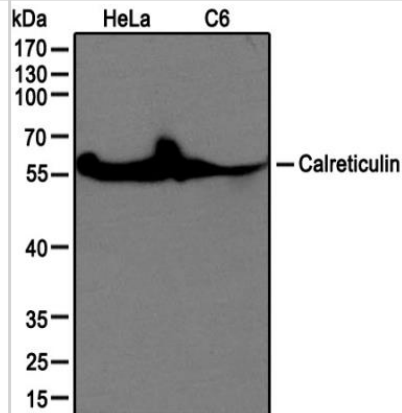
NB600-103SS

Calreticulin Antibody

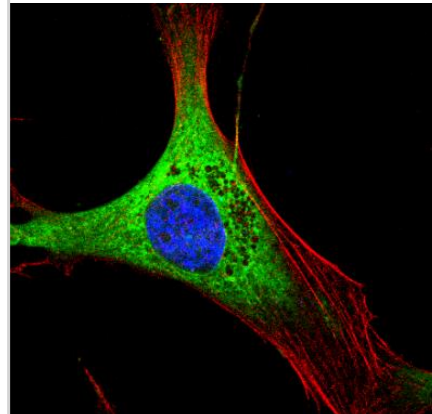
| Product Information | |
|------------------------------------|--------------------------------------------------------------------------------------------------------------------------------------------------------------------------------------------------------------------------------------------------------------------------------------------|
| Unit Size | 0.025 ml |
| Concentration | This product is unpurified. The exact concentration of antibody is not quantifiable. |
| Storage | Store at 4C short term. Aliquot and store at -20C long term. Avoid freeze-thaw cycles. |
| Clonality | Polyclonal |
| Preservative | 0.1% Sodium Azide |
| Purity | Whole antisera |
| Target Molecular Weight | 55 kDa |
| Product Description | |
| Host | Rabbit |
| Gene ID | 811 |
| Gene Symbol | CALR |
| Species | Human, Mouse |
| Species Reactivity | Human and Mouse. |
| Marker | Endoplasmic Reticulum Marker |
| Immunogen | A full-length protein to mouse Calreticulin [UniProt# P14211] |
| Product Application Details | |
| Applications | Western Blot, Simple Western, Immunocytochemistry/Immunofluorescence |
| Recommended Dilutions | Western Blot 1:1000-1:10000, Immunocytochemistry/Immunofluorescence 1:20-1:100, Simple Western 1:500 |
| Application Notes | This Calreticulin antibody is useful for Western blot, where a band at ~55 kDa is seen. Note that Calreticulin has several reported isoforms that range from 48-62 kDa. ICC data from customer review. In Simple Western only 10-15 uL of the recommended dilution is used per data point. |

Images

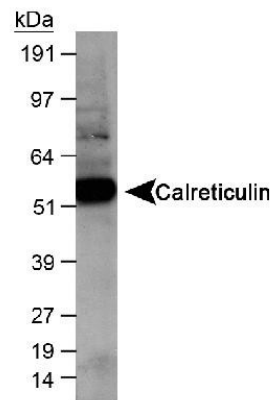
Western Blot: Calreticulin Antibody [NB600-103] - Western blot analysis of HeLa and C6 cell lysate using calreticulin antibody at 1:1000.



Immunocytochemistry/Immunofluorescence: Calreticulin Antibody [NB600-103] - IF Confocal analysis of 3T3 cells using Calreticulin antibody (NB600-103, 1:20). An Alexa Fluor 488-conjugated Goat to rabbit IgG was used as secondary antibody (green). Actin filaments were labeled with Alexa Fluor 568 phalloidin (red). DAPI was used to stain the cell nuclei (blue).



Western Blot: Calreticulin Antibody [NB600-103] - Detection of calreticulin in human kidney lysate using NB 600-103 at 1:1,000. ECL exposure, 10 seconds.



Simple Western: Calreticulin Antibody [NB600-103] - Simple Western lane view shows a specific band for Calreticulin in 0.2 mg/ml of HeLa lysate. This experiment was performed under reducing conditions using the 12-230 kDa separation system.



Publications

Varjak M, Saul S, Arike L et al. Magnetic fractionation and proteomic dissection of cellular organelles occupied by the late replication complexes of Semliki Forest virus. *J Virol* 2013 Jul 17 [PMID: 23864636] (WB, Human)

Leslie EM et al. Differential inhibition of rat and human Na⁺-dependent taurocholate cotransporting polypeptide (NTCP/SLC10A1) by bosentan: a mechanism for species differences in hepatotoxicity. *J Pharmacol Exp Ther* 321(3):1170-8. 2007 Jun. [PMID: 17374746]

Nurden P et al. Impaired megakaryocytopoiesis in type 2B von Willebrand disease with severe thrombocytopenia. *Blood* 108(8):2587-95. 2006 Oct 15. [PMID: 16720832] (WB, Human)



Procedures

Protocol specific for Calreticulin Antibody (NB600-103)

Western Blot Protocol

1. Perform SDS-PAGE (4-12%) on samples to be analyzed, loading 40 ug of total protein per lane.
2. Transfer proteins to Nitrocellulose according to the instructions provided by the manufacturer of the transfer apparatus.
3. Rinse membrane with dH₂O and then stain the blot using ponceau S for 1-2 minutes to access the transfer of proteins onto the nitrocellulose membrane. Rinse the blot in water to remove excess stain and mark the lane locations and locations of molecular weight markers using a pencil.
4. Rinse the blot in TBS for approximately 5 minutes.
5. Block the membrane using 5% non-fat dry milk + 1% BSA in TBS for 1 hour at room temperature.
6. Rinse the membrane in dH₂O and then wash the membrane in wash buffer [TBS + 0.1% Tween] 3 times for 10 minutes each.
7. Dilute the rabbit anti-calreticulin primary antibody (NB 600-103) in blocking buffer and incubate 1.5 hours at room temperature.
8. Rinse the membrane in dH₂O and then wash the membrane in wash buffer [TBS + 0.1% Tween] 3 times for 10 minutes each.
9. Apply the diluted rabbit-IgG HRP-conjugated secondary antibody in blocking buffer (as per manufacturer's instructions) and incubate 1 hour at room temperature.
10. Wash the blot in wash buffer [TBS + 0.1% Tween] 3 times for 10 minutes each (this step can be repeated as required to reduce background).
11. Apply the detection reagent of choice in accordance with the manufacturer's instructions (Pierce's ECL).

Note: Tween-20 can be added to the blocking or antibody dilution buffer at a final concentration of 0.05-0.2%, provided it does not interfere with antibody-antigen binding.





Novus Biologicals USA

8100 Southpark Way, A-8
Littleton, CO 80120
USA
Phone: 303.730.1950
Toll Free: 1.888.506.6887
Fax: 303.730.1966
novus@novusbio.com

Novus Biologicals Canada

461 North Service Road West, Unit B37
Oakville, ON L6M 2V5
Canada
Phone: 905.827.6400
Toll Free: 855.668.8722
Fax: 905.827.6402
canada@novusbio.com

Novus Biologicals Europe

19 Barton Lane
Abingdon Science Park
Abingdon, OX14 3NB, United Kingdom
Phone: (44) (0) 1235 529449
Free Phone: 0800 37 34 15
Fax: (44) (0) 1235 533420
info@bio-techne.com

General Contact Information

www.novusbio.com
Technical Support: technical@novusbio.com
Orders: orders@novusbio.com
General: novus@novusbio.com

Limitations

This product is for research use only and is not approved for use in humans or in clinical diagnosis. Primary Antibodies are guaranteed for 1 year from date of receipt.

For more information on our guarantee, please visit www.novusbio.com/guarantee.

