

Product Datasheet

CHREBP Antibody NB400-136SS

Unit Size: 0.025 ml

Store at 4C. Do not freeze.

www.novusbio.com



support@novusbio.com

Publications: 3

Protocols, Publications, Related Products, Reviews, Research Tools and Images at:
www.novusbio.com/NB400-136

Updated 6/15/2014 v.20.1

NB400-136SS

CHREBP Antibody

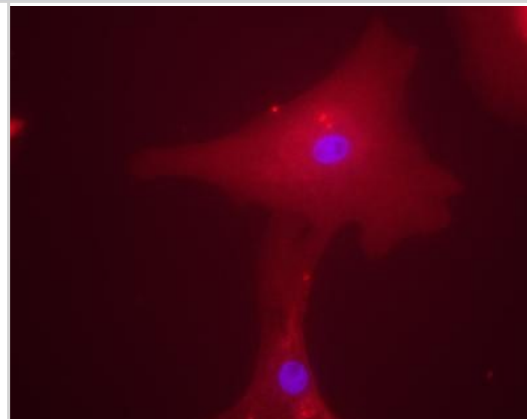
Product Information	
Unit Size	0.025 ml
Concentration	1 mg/ml
Storage	Store at 4C. Do not freeze.
Clonality	Polyclonal
Preservative	0.01% Sodium Azide
Purity	Immunogen affinity purified
Buffer	Tris-citrate/phosphate, pH 7-8

Product Description	
Host	Rabbit
Gene ID	51085
Gene Symbol	MLXIPL
Species	Human, Mouse
Species Reactivity	Human and Mouse. Immunogen sequence has 87% identity with rat.
Immunogen	An internal synthetic peptide made to the human CHREBP protein sequence (between residues 50-150). [UniProt# Q9NP71, Isoform 1/Alpha]

Product Application Details	
Applications	Western Blot, Immunocytochemistry/Immunofluorescence
Recommended Dilutions	Immunocytochemistry/Immunofluorescence 1:100, Western Blot
Application Notes	This CHREBP antibody is useful for Immunocytochemistry/Immunofluorescence.

Images

Immunocytochemistry/Immunofluorescence: CHREBP Antibody [NB400-136] - Staining of a human hepatocyte using NB400-136. Overlay staining of ChREBP (rhodamine red) and DAPI nuclear staining (blue).

**Publications**

Seyer P, Vallois D, Poitry-Yamate C et al. Hepatic glucose sensing is required to preserve beta cell glucose competence J Clin Invest 2013 Mar 15 [PMID: 23549084] (WB, Mouse)

Hesse D, Jaschke A, Kanzleiter T et al. GTPase ARFRP1 Is Essential for Normal Hepatic Glycogen Storage and Insulin-Like Growth Factor 1 Secretion Mol Cell Biol 2012 Nov [PMID: 22927645] (WB, Mouse)

Metukuri MR, Zhang P, Basantani MK et al. ChREBP Mediates Glucose-Stimulated Pancreatic β -Cell Proliferation Diabetes 2012 Aug [PMID: 22586588]

Procedures

Immunocytochemistry/Immunofluorescence Protocol for CHREBP Antibody (NB400-136)

Procedure for immunofluorescent staining

1. Wash human hepatocytes grown on cover-slips with PBS twice.
2. Fix cells with 10% buffered formalin for 25 minutes at room temperature.
3. Wash cells with PBS 3 times.
4. Incubate with 0.5% Triton X-100 in PBS for 5 minutes.
5. Wash cells with PBS 3 times.
6. Block with 1% BSA in PBS for 15 minutes at 37C.
7. Incubate with rabbit anti-ChREBP antibody (NB 400-136) 1:100-1:500 in PBS with 1% BSA for 30 minutes at 37C.
8. Wash cells with PBS 3 times.
9. Incubate with Goat anti-rabbit Alexa Fluor 568 antibody 1:2,000 in PBS with 1% BSA for 30 minutes at 37C.
10. Wash cells with PBS 3 times.
11. Mount by Vectashield mounting medium with DAPI.
12. Take pictures by using Rhodamine and DAPI filters.





Novus Biologicals USA

8100 Southpark Way, A-8
Littleton, CO 80120
USA
Phone: 303.730.1950
Toll Free: 1.888.506.6887
Fax: 303.730.1966
novus@novusbio.com

Novus Biologicals Canada

461 North Service Road West, Unit B37
Oakville, ON L6M 2V5
Canada
Phone: 905.827.6400
Toll Free: 855.668.8722
Fax: 905.827.6402
canada@novusbio.com

Novus Biologicals Europe

19 Barton Lane
Abingdon Science Park
Abingdon, OX14 3NB, United Kingdom
Phone: (44) (0) 1235 529449
Free Phone: 0800 37 34 15
Fax: (44) (0) 1235 533420
info@bio-techne.com

General Contact Information

www.novusbio.com
Technical Support: technical@novusbio.com
Orders: orders@novusbio.com
General: novus@novusbio.com

Limitations

This product is for research use only and is not approved for use in humans or in clinical diagnosis. Primary Antibodies are guaranteed for 1 year from date of receipt.

For more information on our guarantee, please visit www.novusbio.com/guarantee.

