

Product Datasheet

TLR5 Antibody NB200-571

Unit Size: 0.1 mg

Store at 4C in the dark.

www.novusbio.com



support@novusbio.com

Publications: 15

Protocols, Publications, Related Products, Reviews, Research Tools and Images at:
www.novusbio.com/NB200-571

Updated 6/15/2014 v.20.1

NB200-571

TLR5 Antibody (85B152.5) [FITC]

Product Information	
Unit Size	0.1 mg
Concentration	0.5 mg/ml
Storage	Store at 4C in the dark.
Clonality	Monoclonal
Clone	85B152.5
Preservative	0.05% Sodium Azide
Isotype	IgG2a
Conjugate	FITC
Purity	Protein G purified
Buffer	0.1 mg antibody in 0.2 ml buffer (10 mM Tris, 150 mM NaCl) containing 0.05% BSA.
Target Molecular Weight	100 kDa

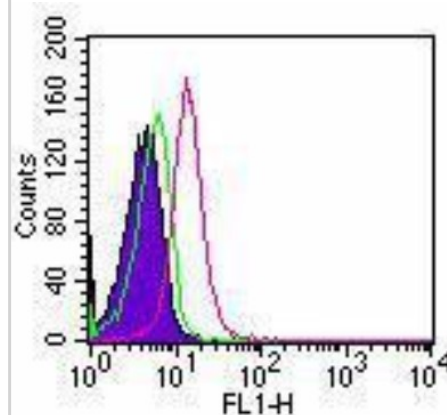
Product Description	
Host	Mouse
Gene ID	7100
Gene Symbol	TLR5
Species	Human, Mouse, Canine
Species Reactivity	Dog, Human, Mouse
Immunogen	This antibody was developed against KLH-conjugated synthetic peptide corresponding to a portion of human TLR5. It will cross-react with mouse TLR5 (NP_003259).
Notes	Do not expose to light.

Product Application Details	
Applications	Flow Cytometry
Recommended Dilutions	Flow Cytometry 0.5-1 ug/10 ⁶ cells
Application Notes	Reported use in Flow Cytometry (cell surface): see Wong et al, 2007 for details.

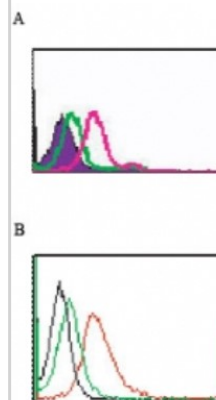


Images

Flow Cytometry: TLR5 Antibody (85B152.5) [FITC] [NB200-571] - Intracellular flow analysis of TLR5 in 10^6 human lymphocytes using 0.5 ug of NB200-571. The shaded histogram represents cells without antibody, green represents isotype control (BD), and red represents TLR5 antibody.



Flow Cytometry: TLR5 Antibody (85B152.5) [FITC] [NB200-571] - analysis of TLR5 in 10^6 cells using 0.5 ugs of FITC-conjugated antibody: A) Intracellular flow testing of human Ramos cells and B) cell surface flow testing of mouse RAW cells. The shaded (or black) histogram represents cells without antibody, green represents isotype control antibody, and red represents TLR5 antibody.



Publications

Sawitzki B, Brunstein C, Meisel C et al, Prevention of Graft-versus-Host Disease by Adoptive T Regulatory Therapy Is Associated with Active Repression of Peripheral Blood Toll-Like Receptor 5 mRNA Expression. *Biol Blood Marrow Transplant* 2013 Nov 1 [PMID: 24184334] (FLOW, Human)

Mansson A, Adner M, Cardell LO. Toll-like receptors in cellular subsets of human tonsil T cells: altered expression during recurrent tonsillitis. *Respir Res.* 2006 Feb 27 [PMID: 16504163] (Human)

Details:

Antibodies cited (human tonsils separated into cell subtypes): 1. TLR3 [IMG-315D (Flow-Intracellular), Figs 5 and 6]. 2. TLR5 [IMG-663A (Flow-Intracellular), Fig 6]. 3. TLR9 [IMG-305C (Flow-Intracellular), Fig 4.].

van den Berk LC, Jansen BJ, Siebers-Vermeulen KG et al. Toll-like receptor triggering in cord blood mesenchymal stem cells. *J Cell Mol Med.* 2009 Sep [PMID: 20196781]

Riccioli A, Starace D, Galli R et al. Sertoli cells initiate testicular innate immune responses through TLR activation. *J Immunol.* 2006 Nov 15 [PMID: 17082629] (Flow-CS)

Details:

Antibodies cited: 1. TLR5 (IMG-663C) [Flow (intracellular), Fig.3 (RAW246.7 cells, untreated CTR Sertoli cells, Sertoli cells treated with IFN-g)].

LeBouder E, Rey-Nores JE, Raby AC et al. Modulation of neonatal microbial recognition: TLR-mediated innate immune responses are specifically and differentially modulated by human milk. *J Immunol.* 2006 Mar 15 [PMID: 16517743] (Flow)

Details:

Antibodies cited: 1 TLR3 (IMG-315[FC]); 2. TLR5 (IMG-663 [FC])

Wong CK, Cheung PF, Ip WK, Lam CW. Intracellular signaling mechanisms regulating toll-like receptor-mediated activation of eosinophils. *Am J Respir Cell Mol Biol*. 2007 Jul [PMID: 17332440] (Flow-Cs, Flow-IC, Human)

Details:
Antibodies cited (human blood eosinophils and neutrophils from buffy coat): For WB, Fig. 1A: TLR1 (IMG-5012), TLR5 (IMG-664), TLR6 (IMG-304A), TLR7 (IMG-540), TLR8 (IMG-321A), TLR9 (IMG-305A). For Flow (Intracellular) and Flow (Surface), Fig. 1B: TLR1 (IM

He B, Xu W, Santini PA et al. Intestinal bacteria trigger T cell-independent immunoglobulin A(2) class switching by inducing epithelial-cell secretion of the cytokine APRIL. *Immunity*. 2007 Jun [PMID: 17570691] (IHC-P)

Details:
1. TLR5 (IMG-663C) [IHC-P, Fig.3A-3C (intestinal mucosa)].

Pegu A, Qin S, Fallert Junecko BA et al. Human lymphatic endothelial cells express multiple functional TLRs. *J Immunol*. 2008 Mar 1 [PMID: 18292566] (Flow-CS, Human)

Details:
Antibodies cited [Flow (Cell surface) and Flow (Intracellular), human lymphatic endothelial cells, Fig. 1D]: 1. IMG-663C (TLR5-FITC) 2. IMG-304C (TLR6-FITC).

Crellin NK, Garcia RV, Hadisfar O et al. Human CD4+ T cells express TLR5 and its ligand flagellin enhances the suppressive capacity and expression of FOXP3 in CD4+CD25+ T regulatory cells. *J Immunol*. 2005 Dec 15 [PMID: 16339542] (Flow-IC)

Details:
Antibodies cited: 1. TLR5-FITC (IMG-663C) [Flow-intracellular, Figs 3B and 3D (primary human CD4+ T cells, primary human CD14+ monocytes, primary human monocyte-derived dendritic cells)]; 2, TLR5 (IMG-664) [WB, Fig 5 (primary human CD4+ T cells)] The spec

Wu H, Wang H, Xiong W et al. Expression patterns and functions of toll-like receptors in mouse sertoli cells. *Endocrinology*. 2008 Sep [PMID: 18499758]

Abdi J, Mutis T, Garssen J, Redegeld F. Characterization of the Toll-like receptor expression profile in human multiple myeloma cells. *PLoS One*. 2013 Apr 8 [PMID: 23593278]

Burgener IA, Jungi TW. Antibodies specific for human or murine Toll-like receptors detect canine leukocytes by flow cytometry. *Vet Immunol Immunopathol*. 2008 Jul 15 [PMID: 18439687]

More publications at <http://www.novusbio.com/NB200-571>



Novus Biologicals USA

8100 Southpark Way, A-8
Littleton, CO 80120
USA
Phone: 303.730.1950
Toll Free: 1.888.506.6887
Fax: 303.730.1966
novus@novusbio.com

Novus Biologicals Canada

461 North Service Road West, Unit B37
Oakville, ON L6M 2V5
Canada
Phone: 905.827.6400
Toll Free: 855.668.8722
Fax: 905.827.6402
canada@novusbio.com

Novus Biologicals Europe

19 Barton Lane
Abingdon Science Park
Abingdon, OX14 3NB, United Kingdom
Phone: (44) (0) 1235 529449
Free Phone: 0800 37 34 15
Fax: (44) (0) 1235 533420
info@bio-techne.com

General Contact Information

www.novusbio.com
Technical Support: technical@novusbio.com
Orders: orders@novusbio.com
General: novus@novusbio.com

Products Related to NB200-571

NBL1-16954	TLR5 Overexpression Lysate (Native)
NBP2-24959	TLR5 Antibody (85B152.5) [PE]
H00007100-Q01-10ug	TLR5 Partial Recombinant Protein
NBP2-29328	MyD88 Inhibitor Peptide Set

Limitations

This product is for research use only and is not approved for use in humans or in clinical diagnosis. Primary Antibodies are guaranteed for 1 year from date of receipt.

For more information on our guarantee, please visit www.novusbio.com/guarantee.

