

# **Product Datasheet**

## **p14ARF/CDKN2A Antibody**

### **NB200-159SS**

Unit Size: 0.025 ml

Store at 4C. Do not freeze.

[www.novusbio.com](http://www.novusbio.com)



[support@novusbio.com](mailto:support@novusbio.com)

Protocols, Publications, Related Products, Reviews, Research Tools and Images at:  
[www.novusbio.com/NB200-159](http://www.novusbio.com/NB200-159)

Updated 6/15/2014 v.20.1

**NB200-159SS**

p14ARF/CDKN2A Antibody

Product Information	
Unit Size	0.025 ml
Concentration	1 mg/ml
Storage	Store at 4C. Do not freeze.
Clonality	Polyclonal
Preservative	0.1% Sodium Azide
Purity	Immunogen affinity purified
Buffer	Tris-citrate/phosphate, pH 7-8
Target Molecular Weight	14 kDa

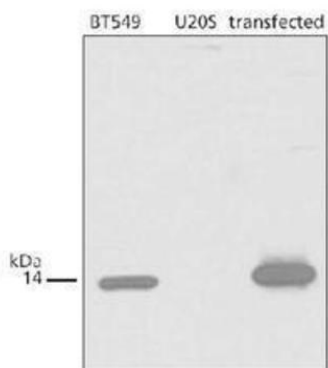
Product Description	
Host	Rabbit
Gene ID	1029
Gene Symbol	CDKN2A
Species	Human
Species Reactivity	Human. Based on 100% sequence identity, this antibody is predicted to react with Orangutan and White-tufted-ear marmoset.
Immunogen	The epitope recognized by this antibody maps to a region between residue 125 and the C-terminus (residue 173) of human p14ARF using the numbering given in entry NP_478102.1 (GeneID 1029).

Product Application Details	
Applications	Western Blot, ELISA, Immunohistochemistry, Immunohistochemistry-Paraffin
Recommended Dilutions	ELISA 1:100-1:2000, Immunohistochemistry 1:100-1:500, Immunohistochemistry-Paraffin 1:100-1:500, Western Blot 1:500-1:2500
Application Notes	This p14ARF antibody is useful for ELISA, Immunohistochemistry on paraffin-embedded sections and Western blot. In WB a band is seen at ~14 kDa representing p14ARF. *The investigator should determine the optimal working dilution for a specific application.

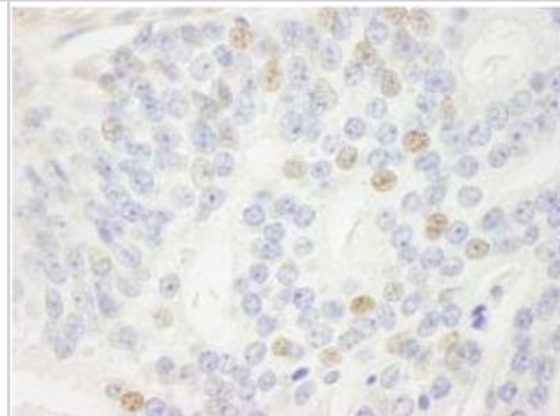


## Images

Western Blot: p14ARF Antibody [NB200-159] - Western blot detection of p14ARF using NB200-159. Samples: WCE (25 ug) from BT549, positive control and U205 negative control and transfected IMR90 cells.



Immunohistochemistry-Paraffin: p14ARF Antibody [NB200-159] - FFPE section of human prostate adenocarcinoma. Affinity purified rabbit anti-p14ARF used at a dilution of 1:250.





### **Novus Biologicals USA**

8100 Southpark Way, A-8  
Littleton, CO 80120  
USA  
Phone: 303.730.1950  
Toll Free: 1.888.506.6887  
Fax: 303.730.1966  
novus@novusbio.com

### **Novus Biologicals Canada**

461 North Service Road West, Unit B37  
Oakville, ON L6M 2V5  
Canada  
Phone: 905.827.6400  
Toll Free: 855.668.8722  
Fax: 905.827.6402  
canada@novusbio.com

### **Novus Biologicals Europe**

19 Barton Lane  
Abingdon Science Park  
Abingdon, OX14 3NB, United Kingdom  
Phone: (44) (0) 1235 529449  
Free Phone: 0800 37 34 15  
Fax: (44) (0) 1235 533420  
info@bio-techne.com

### **General Contact Information**

www.novusbio.com  
Technical Support: technical@novusbio.com  
Orders: orders@novusbio.com  
General: novus@novusbio.com

### **Limitations**

This product is for research use only and is not approved for use in humans or in clinical diagnosis. Primary Antibodies are guaranteed for 1 year from date of receipt.

**For more information on our guarantee, please visit [www.novusbio.com/guarantee](http://www.novusbio.com/guarantee).**

