

# Product Datasheet

## Survivin Antibody NB110-92717SS

Unit Size: 0.025 ml

Store at 4C short term. Aliquot and store at -20C long term. Avoid freeze-thaw cycles.

[www.novusbio.com](http://www.novusbio.com)



[support@novusbio.com](mailto:support@novusbio.com)

### Publications: 2

Protocols, Publications, Related Products, Reviews, Research Tools and Images at:  
[www.novusbio.com/NB110-92717](http://www.novusbio.com/NB110-92717)

Updated 6/15/2014 v.20.1

**NB110-92717SS**

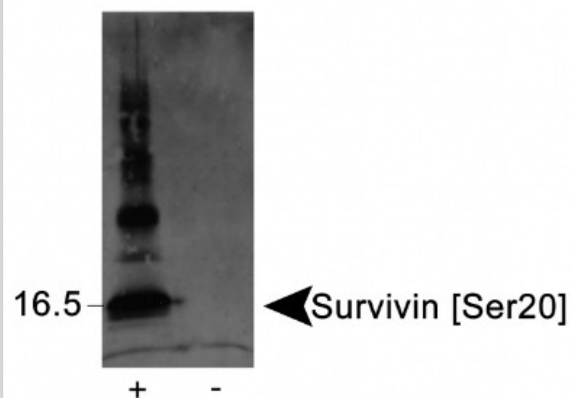
Survivin [p Ser20] Antibody

| <b>Product Information</b>         |   |
|------------------------------------|---|
| <b>Unit Size</b>                   | 0.025 ml  |
| <b>Concentration</b>               | 1.25 mg/ml  |
| <b>Storage</b>                     | Store at 4C short term. Aliquot and store at -20C long term. Avoid freeze-thaw cycles.  |
| <b>Clonality</b>                   | Polyclonal  |
| <b>Preservative</b>                | 0.1% Sodium Azide   |
| <b>Purity</b>                      | Immunogen affinity purified   |
| <b>Buffer</b>                      | PBS, 30% glycerol   |
| <b>Target Molecular Weight</b>     | 16.5 kDa  |
| <b>Product Description</b>         |   |
| <b>Host</b>                        | Rabbit  |
| <b>Gene ID</b>                     | 332   |
| <b>Gene Symbol</b>                 | BIRC5   |
| <b>Species</b>                     | Human, Rat  |
| <b>Species Reactivity</b>          | Human and Rat.  |
| <b>Immunogen</b>                   | A synthetic peptide surrounding the phosphorylated serine 20 of the human Survivin protein. [Swiss-Prot #O15392]  |
| <b>Product Application Details</b> |   |
| <b>Applications</b>                | Western Blot, Immunocytochemistry/Immunofluorescence  |
| <b>Recommended Dilutions</b>       | Immunocytochemistry/Immunofluorescence 1:100, Western Blot 3 ug/ml  |
| <b>Application Notes</b>           | This Survivin antibody is useful for Immunocytochemistry/Immunofluorescence and Western blot, where a band is seen at ~16.5 kDa. In ICC/IF staining was observed in the spindle midzone, centrosome and intercellular bridge. |

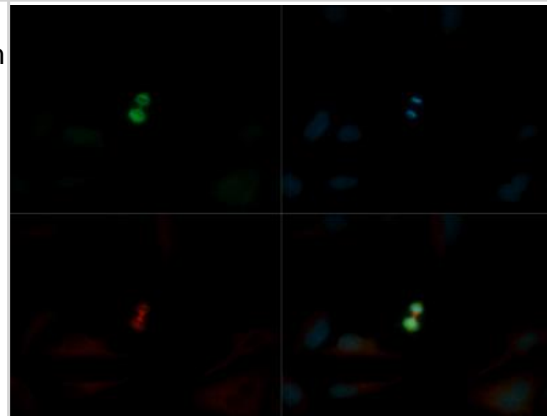


## Images

Western Blot: Survivin [p Ser20] Antibody [NB110-92717] - Detection of Survivin [Ser20] in phosphorylated recombinant protein (+), but not in unphosphorylated protein (-) using NB110-92717.



Immunocytochemistry/Immunofluorescence: Survivin [p Ser20] Antibody [NB110-92717] - Survivin [p Ser20] antibody was tested in Hela cells with DyLight 488 (green). Nuclei and alpha-tubulin were counterstained with DAPI (blue) and Dylight 550 (red).



## Publications

Muschol-Steinmetz C, Friemel A, Kreis NN et al. Function of Survivin in Trophoblastic Cells of the Placenta. PLoS One. 2013 Sep 19 [PMID: 24069188] (WB, Human)

Dohi, T et al. Compartmentalized phosphorylation of IAP by protein kinase A regulates cytoprotection. Mol Cell;27 (1):17-28. 2007 Jul 6. [PMID: 17612487] (WB, Rat)

## Procedures

### **Immunocytochemistry/Immunofluorescence Protocol for Survivin [p Ser20] antibody (NB110-92717)**

Culture cells to appropriate density in 35 mm culture dishes or 6-well plates.

1. Remove culture medium and add 10% formalin to the dish. Fix at room temperature for 30 minutes.
2. Remove the formalin and add ice cold methanol. Incubate for 5-10 minutes.
3. Remove methanol and add washing solution (i.e. PBS). Be sure to not let the specimen dry out. Wash three times for 10 minutes.
4. To block nonspecific antibody binding incubate in 10% normal goat serum from 1 hour to overnight at room temperature.
5. Add primary antibody at appropriate dilution and incubate at room temperature from 2 hours to overnight at room temperature.
6. Remove primary antibody and replace with washing solution. Wash three times for 10 minutes.
7. Add secondary antibody at appropriate dilution. Incubate for 1 hour at room temperature.
8. Remove antibody and replace with wash solution, then wash for 10 minutes. Add Hoechst 33258 to wash solution at 1:25,000 and incubate for 10 minutes. Wash a third time for 10 minutes.
9. Cells can be viewed directly after washing. The plates can also be stored in PBS containing Azide covered in Parafilm (TM). Cells can also be cover-slipped using Fluoromount, with appropriate sealing.

\*The above information is only intended as a guide. The researcher should determine what protocol best meets their needs. Please follow safe laboratory procedures.





### **Novus Biologicals USA**

8100 Southpark Way, A-8  
Littleton, CO 80120  
USA  
Phone: 303.730.1950  
Toll Free: 1.888.506.6887  
Fax: 303.730.1966  
novus@novusbio.com

### **Novus Biologicals Canada**

461 North Service Road West, Unit B37  
Oakville, ON L6M 2V5  
Canada  
Phone: 905.827.6400  
Toll Free: 855.668.8722  
Fax: 905.827.6402  
canada@novusbio.com

### **Novus Biologicals Europe**

19 Barton Lane  
Abingdon Science Park  
Abingdon, OX14 3NB, United Kingdom  
Phone: (44) (0) 1235 529449  
Free Phone: 0800 37 34 15  
Fax: (44) (0) 1235 533420  
info@bio-techne.com

### **General Contact Information**

www.novusbio.com  
Technical Support: technical@novusbio.com  
Orders: orders@novusbio.com  
General: novus@novusbio.com

### **Limitations**

This product is for research use only and is not approved for use in humans or in clinical diagnosis. Primary Antibodies are guaranteed for 1 year from date of receipt.

**For more information on our guarantee, please visit [www.novusbio.com/guarantee](http://www.novusbio.com/guarantee).**

