

Product Datasheet

NPM1 Antibody **NB110-61646SS**

Unit Size: 0.025 ml

Store at 4C short term. Aliquot and store at -20C long term. Avoid freeze-thaw cycles.

www.novusbio.com



support@novusbio.com

Protocols, Publications, Related Products, Reviews, Research Tools and Images at:
www.novusbio.com/NB110-61646

Updated 6/15/2014 v.20.1

NB110-61646SS

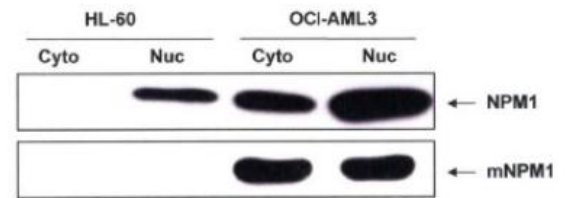
NPM1 Antibody

Product Information	
Unit Size	0.025 ml
Concentration	0.3 mg/ml
Storage	Store at 4C short term. Aliquot and store at -20C long term. Avoid freeze-thaw cycles.
Clonality	Polyclonal
Preservative	No Preservative
Purity	Immunogen affinity purified
Buffer	100 mM glycine, 65 mM Tris, pH 7.0 in 50% glycerol
Target Molecular Weight	37 kDa
Product Description	
Host	Rabbit
Gene ID	4869
Gene Symbol	NPM1
Species	Human
Species Reactivity	Human.
Specificity/Sensitivity	This antibody is specific for the mutant form of Nucleophosmin.
Immunogen	A synthetic peptide made to a C-terminal region of human mutant Nucleophosmin (within residues 250-294). [Accession# AAW67752]
Product Application Details	
Applications	Western Blot, Flow Cytometry, Immunocytochemistry/Immunofluorescence, Immunohistochemistry, Immunohistochemistry-Paraffin, Immunoprecipitation
Recommended Dilutions	Flow Cytometry 1:100, Immunocytochemistry/Immunofluorescence 1:50-1:100, Immunohistochemistry 1:50-1:100, Immunohistochemistry-Paraffin 1:50-1:100, Immunoprecipitation 1:50, Western Blot 1:1000
Application Notes	This Nucleophosmin antibody is useful for Western blot, Immunoprecipitation, Immunofluorescence/Immunocytochemistry, Immunohistochemistry on paraffin-embedded section and Flow Cytometry. In WB a band can be seen at approximately 37 kDa.

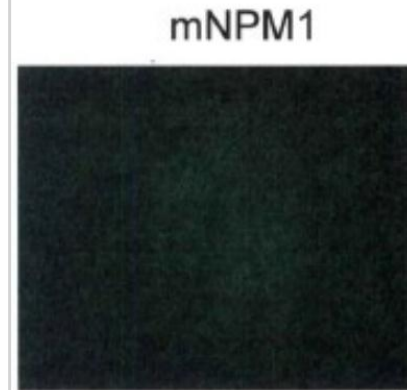


Images

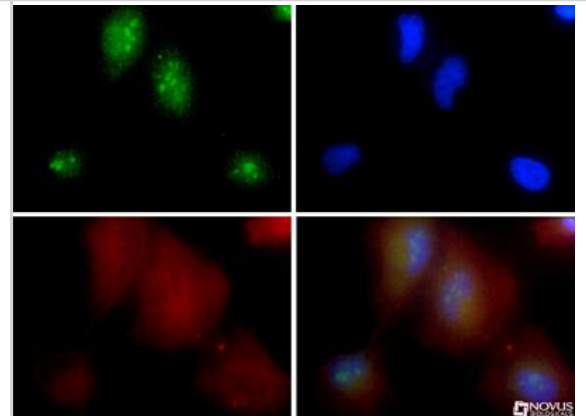
Western Blot: Nucleophosmin Antibody [NB110-61646] - Detection of mutant Nucleophosmin in OCI-AML3 lysates.



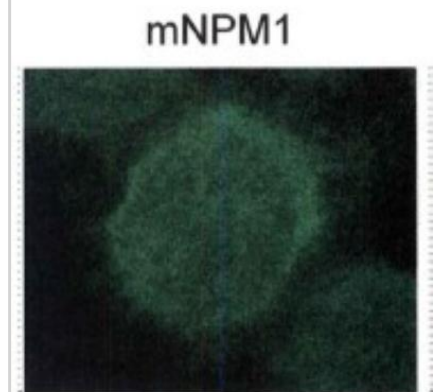
Immunocytochemistry/Immunofluorescence: Nucleophosmin Antibody [NB110-61646] - Nucleophosmin localization by immunofluorescence in HL-60 cells (negative control).



Immunocytochemistry/Immunofluorescence: Nucleophosmin Antibody [NB110-61646] - Nucleophosmin antibody was tested in HeLa cells with FITC (green). Nuclei and alpha-tubulin were counterstained with Dapi (blue) and Dylight 550 (red).



Immunocytochemistry/Immunofluorescence: Nucleophosmin Antibody [NB110-61646] - Nucleophosmin localization by immunofluorescence in OCI-AML3 cells.



Procedures

Western Blot Protocol for Nucleophosmin Antibody (NB110-61646)

Western Blot

1. Run 50 ug of cytoplasmic fraction into each lane of an 11% SDS-PAGE.
2. Block the membrane.
3. Dilute the primary anti-mNPM1 (NB110-61646) in 2.5% NFDM and incubate for 2 hours at room temperature.
4. Wash the membrane.
5. Dilute the secondary anti-rabbit IgG, conjugated to HRP in 2.5% NFDM and incubate for 1 hour at room temperature.
6. Develop the blot.



**Novus Biologicals USA**

8100 Southpark Way, A-8
Littleton, CO 80120
USA
Phone: 303.730.1950
Toll Free: 1.888.506.6887
Fax: 303.730.1966
novus@novusbio.com

Novus Biologicals Canada

461 North Service Road West, Unit B37
Oakville, ON L6M 2V5
Canada
Phone: 905.827.6400
Toll Free: 855.668.8722
Fax: 905.827.6402
canada@novusbio.com

Novus Biologicals Europe

19 Barton Lane
Abingdon Science Park
Abingdon, OX14 3NB, United Kingdom
Phone: (44) (0) 1235 529449
Free Phone: 0800 37 34 15
Fax: (44) (0) 1235 533420
info@bio-technie.com

General Contact Information

www.novusbio.com
Technical Support: technical@novusbio.com
Orders: orders@novusbio.com
General: novus@novusbio.com

Limitations

This product is for research use only and is not approved for use in humans or in clinical diagnosis. Primary Antibodies are guaranteed for 1 year from date of receipt.

For more information on our guarantee, please visit www.novusbio.com/guarantee.

