

# **Product Datasheet**

## **Lactoperoxidase Antibody**

### **NB110-61572SS**

Unit Size: 0.025 ml

Store at 4C short term. Aliquot and store at -20C long term. Avoid freeze-thaw cycles.

[www.novusbio.com](http://www.novusbio.com)



[support@novusbio.com](mailto:support@novusbio.com)

Protocols, Publications, Related Products, Reviews, Research Tools and Images at:  
[www.novusbio.com/NB110-61572](http://www.novusbio.com/NB110-61572)

Updated 2/9/2014 v.20.1

**NB110-61572SS**

## Lactoperoxidase Antibody

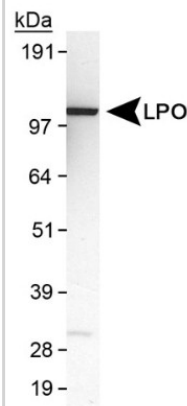
Product Information	
Unit Size	0.025 ml
Concentration	1.7 mg/ml
Storage	Store at 4C short term. Aliquot and store at -20C long term. Avoid freeze-thaw cycles.
Clonality	Polyclonal
Preservative	0.1% Sodium Azide
Purity	Immunogen affinity purified
Buffer	PBS, 30% glycerol
Target Molecular Weight	100 kDa

Product Description	
Host	Rabbit
Gene ID	4025
Gene Symbol	LPO
Species	Human, Bovine, Primate
Species Reactivity	Human, monkey and bovine. Immunogen has 81% homology to sheep and 73% homology to mouse and rat.
Immunogen	Synthetic peptide made to an internal portion of the human Lactoperoxidase protein (within residues 300-400). [Swiss-Prot# P22079]

Product Application Details	
Applications	Western Blot
Recommended Dilutions	Western Blot 0.5-2 ug/ml
Application Notes	This Lactoperoxidase antibody is useful for Western blot analysis where a band is seen at ~100 kDa. Caution, do not use milk for the blocking or dilution buffers.

**Images**

Western Blot: Lactoperoxidase Antibody [NB110-61572] - Detection of LPO in MDA-MB231 cell lysate using NB110-61572.



## Procedures

### Protocol specific for Lactoperoxidase Antibody (NB110-61572)

#### Western Blot Protocol

1. Perform SDS-PAGE (4-12% MOPS) on samples to be analyzed, loading 38 ug of total protein per lane.
2. Transfer proteins to Nitrocellulose according to the instructions provided by the manufacturer of the transfer apparatus.
3. Rinse membrane with dH<sub>2</sub>O and then stain the blot using Ponceau S for 1-2 minutes to access the transfer of proteins onto the nitrocellulose membrane. Rinse the blot in water to remove excess stain and mark the lane locations and locations of molecular weight markers using a pencil.
4. Rinse the blot in TBS for approximately 5 minutes.
5. Block the membrane using 5% BSA in TBS + Tween, 1 hour at RT.
6. Rinse the membrane in dH<sub>2</sub>O and then wash the membrane in wash buffer [TBS + 0.1% Tween] 3 times for 10 minutes each.
7. Dilute the rabbit anti-LPO primary antibody (NB 110-61572) in blocking buffer and incubate 1 hour at room temperature.
8. Rinse the membrane in dH<sub>2</sub>O and then wash the membrane in wash buffer [TBS + 0.1% Tween] 3 times for 10 minutes each.
9. Apply the diluted rabbit-IgG HRP-conjugated secondary antibody in blocking buffer (as per manufacturers instructions) and incubate 1 hour at room temperature.
10. Wash the blot in wash buffer [TBS + 0.1% Tween] 3 times for 10 minutes each (this step can be repeated as required to reduce background).
11. Apply the detection reagent of choice in accordance with the manufacturers instructions (Pierce ECL).

Note: Tween-20 can be added to the blocking or antibody dilution buffer at a final concentration of 0.05-0.2%, provided it does not interfere with antibody-antigen binding.





### **Novus Biologicals USA**

8100 Southpark Way, A-8  
Littleton, CO 80120  
USA  
Phone: 303.730.1950  
Toll Free: 1.888.506.6887  
Fax: 303.730.1966  
novus@novusbio.com

### **Novus Biologicals Canada**

461 North Service Road West, Unit B37  
Oakville, ON L6M 2V5  
Canada  
Phone: 905.827.6400  
Toll Free: 855.668.8722  
Fax: 905.827.6402  
canada@novusbio.com

### **Novus Biologicals Europe**

19 Barton Lane  
Abingdon Science Park  
Abingdon, OX14 3NB, United Kingdom  
Phone: (44) (0) 1235 529449  
Free Phone: 0800 37 34 15  
Fax: (44) (0) 1235 533420  
info@bio-techne.com

### **General Contact Information**

www.novusbio.com  
Technical Support: technical@novusbio.com  
Orders: orders@novusbio.com  
General: novus@novusbio.com

### **Limitations**

This product is for research use only and is not approved for use in humans or in clinical diagnosis. Primary Antibodies are guaranteed for 1 year from date of receipt.

**For more information on our guarantee, please visit [www.novusbio.com/guarantee](http://www.novusbio.com/guarantee).**

