

Product Datasheet

Capicua Antibody NB110-59906SS

Unit Size: 0.025 ml

Store at 4C. Do not freeze.

www.novusbio.com



support@novusbio.com

Protocols, Publications, Related Products, Reviews, Research Tools and Images at:
www.novusbio.com/NB110-59906

Updated 6/15/2014 v.20.1

NB110-59906SS

Capicua Antibody

Product Information	
Unit Size	0.025 ml
Concentration	1 mg/ml
Storage	Store at 4C. Do not freeze.
Clonality	Polyclonal
Preservative	0.09% Sodium Azide
Purity	Immunogen affinity purified
Buffer	Tris-citrate/phosphate, pH 7-8
Target Molecular Weight	250 kDa

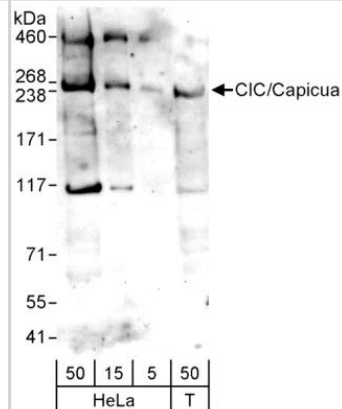
Product Description	
Host	Rabbit
Gene ID	23152
Gene Symbol	CIC
Species	Human, Mouse, Rat, Canine
Species Reactivity	Human, mouse, rat, canine.
Immunogen	The epitope recognized by this antibody maps to a C-terminal region within residue 1500-1608 of human Capicua. [NP_055940.3]

Product Application Details	
Applications	Western Blot, Immunocytochemistry/Immunofluorescence, Immunoprecipitation
Recommended Dilutions	Immunocytochemistry/Immunofluorescence 1:50, Immunoprecipitation 2-5 ug/mg lysate, Western Blot 1:1000-1:2500
Application Notes	This Capicua antibody is useful for Immunocytochemistry/Immunofluorescence, Immunoprecipitation and Western blot. In Western blot a band is observed at ~250 kDa. CIC (~164 kDa) interacts with Ataxin 1 (~87 kDa) which may explain the band observed at 250 kDa (complex). In ICC/IF nuclear staining was observed in Neuro2A cells.

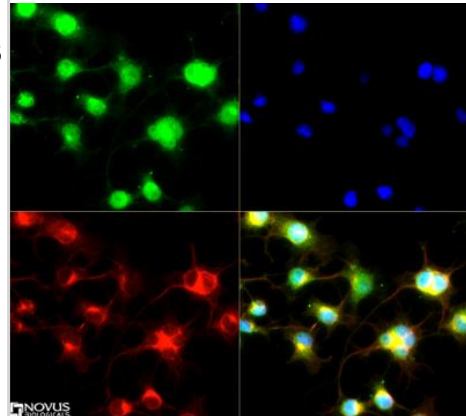


Images

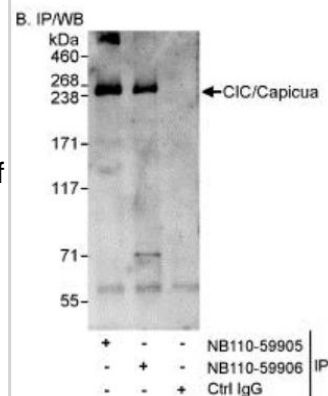
Western Blot: Capicua Antibody [NB110-59906] - WB detection of Human Capicua /CIC in whole cell lysates of HeLa (5, 15 and 50 ug) and 293T (T, 50 ug) cells using affinity purified rabbit Capicua antibody NB110-59906 used at 1 ug/ml concentration.



Immunocytochemistry/Immunofluorescence: Capicua Antibody [NB110-59906] - Capicua antibody was tested in Neuro 2A cells with DyLight 488 (green). Nuclei and alpha-tubulin were counterstained with DAPI (blue) and DyLight 550 (red).



Immunoprecipitation: Capicua Antibody [NB110-59906] - IP detection of Human Capicua / CIC in 1 mg of whole cell lysate from HeLa cells (20% of IP loaded) using affinity purified rabbit polyclonal Capicua antibody (NB110-59906) at a concentration of 3 ug/mg lysate. Capicua / CIC was immunoprecipitated by NB110-59905 also, which recognizes an upstream epitope. Detection: Chemiluminescence with exposure times of 3 minutes.



Procedures

ICC/IF protocol specific for Capicua antibody (NB110-59906)

Immunocytochemistry Protocol

Culture cells to appropriate density in 35 mm culture dishes or 6-well plates.

1. Remove culture medium and add 10% formalin to the dish. Fix at room temperature for 30 minutes.
2. Remove the formalin and add ice cold methanol. Incubate for 5-10 minutes.
3. Remove methanol and add washing solution (i.e. PBS). Be sure to not let the specimen dry out. Wash three times for 10 minutes.
4. To block nonspecific antibody binding incubate in 10% normal goat serum from 1 hour to overnight at room temperature.
5. Add primary antibody at appropriate dilution and incubate at room temperature from 2 hours to overnight at room temperature.
6. Remove primary antibody and replace with washing solution. Wash three times for 10 minutes.
7. Add secondary antibody at appropriate dilution. Incubate for 1 hour at room temperature.
8. Remove antibody and replace with wash solution, then wash for 10 minutes. Add Hoechst 33258 to wash solution at 1:25,000 and incubate for 10 minutes. Wash a third time for 10 minutes.
9. Cells can be viewed directly after washing. The plates can also be stored in PBS containing Azide covered in Parafilm (TM). Cells can also be cover-slipped using Fluoromount, with appropriate sealing.

*The above information is only intended as a guide. The researcher should determine what protocol best meets their needs. Please follow safe laboratory procedures.





Novus Biologicals USA

8100 Southpark Way, A-8
Littleton, CO 80120
USA
Phone: 303.730.1950
Toll Free: 1.888.506.6887
Fax: 303.730.1966
novus@novusbio.com

Novus Biologicals Canada

461 North Service Road West, Unit B37
Oakville, ON L6M 2V5
Canada
Phone: 905.827.6400
Toll Free: 855.668.8722
Fax: 905.827.6402
canada@novusbio.com

Novus Biologicals Europe

19 Barton Lane
Abingdon Science Park
Abingdon, OX14 3NB, United Kingdom
Phone: (44) (0) 1235 529449
Free Phone: 0800 37 34 15
Fax: (44) (0) 1235 533420
info@bio-techne.com

General Contact Information

www.novusbio.com
Technical Support: technical@novusbio.com
Orders: orders@novusbio.com
General: novus@novusbio.com

Limitations

This product is for research use only and is not approved for use in humans or in clinical diagnosis. Primary Antibodies are guaranteed for 1 year from date of receipt.

For more information on our guarantee, please visit www.novusbio.com/guarantee.

