

# Product Datasheet

## Cyclin D1 Antibody NB110-56901

Unit Size: 0.1 ml

Store at -20C. Avoid freeze-thaw cycles.

[www.novusbio.com](http://www.novusbio.com)



[support@novusbio.com](mailto:support@novusbio.com)

### Publications: 1

Protocols, Publications, Related Products, Reviews, Research Tools and Images at:  
[www.novusbio.com/NB110-56901](http://www.novusbio.com/NB110-56901)

Updated 9/27/2011 v.20.1

**NB110-56901**

## Cyclin D1 Antibody (EP272Y)

Product Information	
Unit Size	0.1 ml
Concentration	This product is unpurified. The exact concentration of antibody is not quantifiable.
Storage	Store at -20C. Avoid freeze-thaw cycles.
Clonality	Monoclonal
Clone	EP272Y
Preservative	0.01% Sodium Azide
Isotype	IgG
Purity	Tissue culture supernatant
Buffer	PBS 49%, Glycerol 50%, BSA 0.05%
Target Molecular Weight	34 kDa kDa

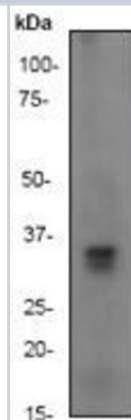
Product Description	
Host	Rabbit
Gene ID	595
Gene Symbol	CCND1
Species	Human, Mouse, Rat
Species Reactivity	Reacts with: Mouse, Rat, Human
Immunogen	A synthetic peptide corresponding to residues near the N-terminus of human Cyclin D1 (within amino acids 1-50) was used as immunogen.
Notes	Manufactured incorporating RabMAb® technology under Epitomics US patents, No 5675,063 and 7,429,487, owned by Abcam.

Product Application Details	
Applications	Western Blot, Immunocytochemistry/Immunofluorescence, Immunohistochemistry, Immunohistochemistry-Paraffin, Immunoprecipitation
Recommended Dilutions	Immunocytochemistry/Immunofluorescence 1:50-100, Immunohistochemistry 1:10-1:2000, Immunohistochemistry-Paraffin 1:250-500, Immunoprecipitation 1:10-100, Western Blot 1:1000-10000

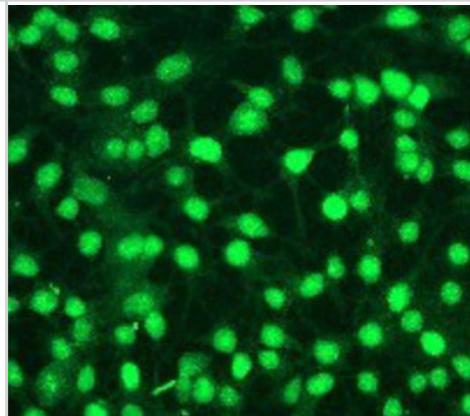


**Images**

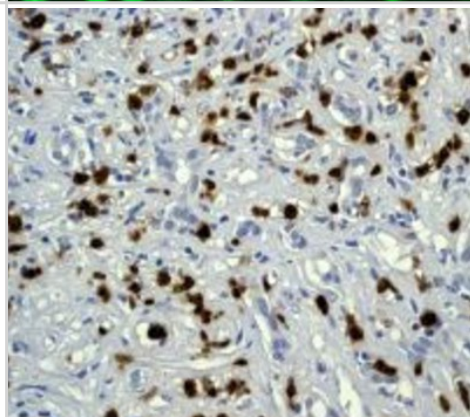
Western Blot: Cyclin D1 Antibody (EP272Y) [NB110-56901] - MCF-7 cell lysate.



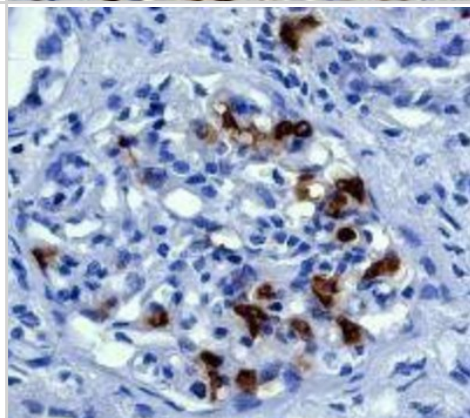
Immunocytochemistry/Immunofluorescence: Cyclin D1 Antibody (EP272Y) [NB110-56901] MCF-7 cells.



Immunohistochemistry-Paraffin: Cyclin D1 Antibody (EP272Y) [NB110-56901] - Human hepatocellular carcinoma.



Immunohistochemistry: Cyclin D1 Antibody (EP272Y) [NB110-56901] - Immunohistochemical analysis of paraffin-embedded human kidney carcinoma using anti-Cyclin D1.



## Publications

Nakanishi M, Menoret A, Tanaka T, Miyamoto S, Montrose DC, Vella AT, Rosenberg DW. Selective PGE(2) suppression inhibits colon carcinogenesis and modifies local mucosal immunity. *Cancer Prev Res (Phila)*;4(8):1198-208. 2011 Aug. [PMID: 21576350] (IHC, Mouse)





### **Novus Biologicals USA**

8100 Southpark Way, A-8  
Littleton, CO 80120  
USA  
Phone: 303.730.1950  
Toll Free: 1.888.506.6887  
Fax: 303.730.1966  
novus@novusbio.com

### **Novus Biologicals Canada**

461 North Service Road West, Unit B37  
Oakville, ON L6M 2V5  
Canada  
Phone: 905.827.6400  
Toll Free: 855.668.8722  
Fax: 905.827.6402  
canada@novusbio.com

### **Novus Biologicals Europe**

12 Cambridge Science Park  
Cambridge, CB4 0FQ  
United Kingdom  
Phone: +44 (0)1223 426001  
Fax: +44 (0)871 971 1635  
europe@novusbio.com

### **General Contact Information**

www.novusbio.com  
Technical Support: technical@novusbio.com  
Orders: orders@novusbio.com  
General: novus@novusbio.com

### **Products Related to NB110-56901**

---

H00000595-R01-20nmol	Cyclin D1 RNAi
NB810-56910	Rabbit IgG Isotype Control
NB730-H	Goat anti-Rabbit IgG Antibody [HRP]
NBL1-08871	Cyclin D1 Overexpression Lysate (Native)

---

### **Limitations**

This product is for research use only and is not approved for use in humans or in clinical diagnosis. Primary Antibodies are guaranteed for 1 year from date of receipt.

**For more information on our guarantee, please visit [www.novusbio.com/guarantee](http://www.novusbio.com/guarantee).**

