

# Product Datasheet

## CDC2/CDK1 Antibody

**NB100-81834**

Unit Size: 0.1 mg

Store at 4C short term. Aliquot and store at -20C long term. Avoid freeze-thaw cycles.

[www.novusbio.com](http://www.novusbio.com)



[support@novusbio.com](mailto:support@novusbio.com)

Protocols, Publications, Related Products, Reviews, Research Tools and Images at:  
[www.novusbio.com/NB100-81834](http://www.novusbio.com/NB100-81834)

Updated 10/23/2013 v.20.1

**NB100-81834**

## CDC2/CDK1 Antibody

Product Information	
Unit Size	0.1 mg
Concentration	1.0 mg/ml
Storage	Store at 4C short term. Aliquot and store at -20C long term. Avoid freeze-thaw cycles.
Clonality	Polyclonal
Preservative	0.02% Sodium Azide
Purity	Immunogen affinity purified
Buffer	phosphate buffered saline (without Mg <sup>2+</sup> and Ca <sup>2+</sup> ), pH 7.4, 150mM NaCl, and 50% glycerol.
Target Molecular Weight	34 kDa

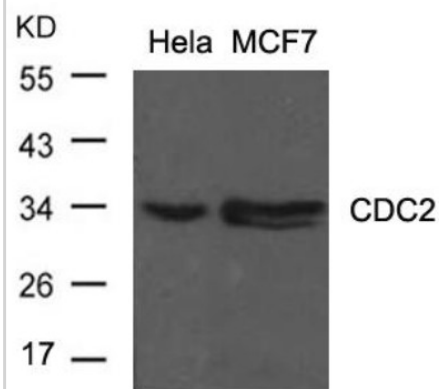
Product Description	
Host	Rabbit
Gene ID	983
Gene Symbol	CDK1
Species	Human, Mouse, Rat
Species Reactivity	Human, Mouse and Rat
Specificity/Sensitivity	CDC2 (specific to aa. 15) detects endogenous level of total CDC2 protein.
Immunogen	The antiserum was produced against synthesized non-phosphopeptide derived from human CDC2 around aa. 15 (G-T-Y-G-V).

Product Application Details	
Applications	Western Blot, Immunocytochemistry/Immunofluorescence, Immunohistochemistry, Immunohistochemistry-Paraffin
Recommended Dilutions	Immunocytochemistry/Immunofluorescence 1:100-1:200, Immunohistochemistry, Immunohistochemistry-Paraffin 1:50-1:100, Western Blot 1:500-1:1000

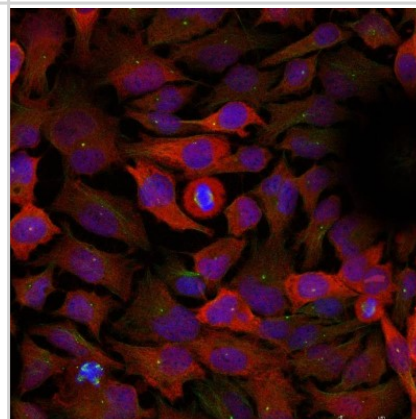


**Images**

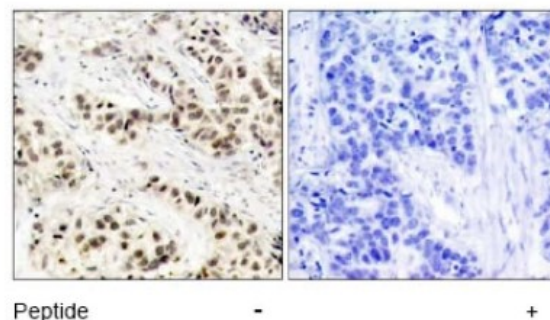
Western Blot: Cdc2 Antibody [NB100-81834] - Analysis of extracts from HeLa and MCF cells using CDC2 (Ab-15) antibody



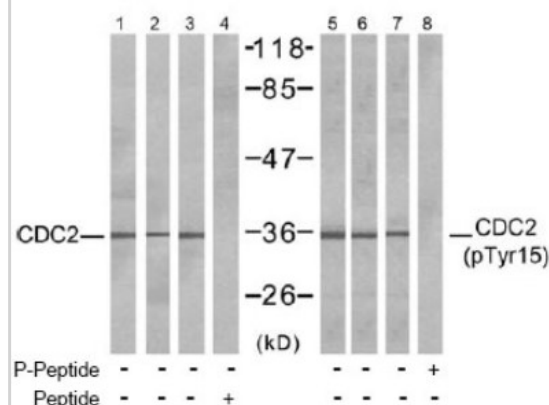
Immunocytochemistry/Immunofluorescence: Cdc2 Antibody [NB100-81834] - Staining of methanol-fixed HeLa cells using CDC2(Ab-15) antibody



Immunohistochemistry: Cdc2 Antibody [NB100-81834] - Immunohistochemical analysis of paraffin-embedded human breast carcinoma tissue using CDC2 (Ab-15) antibody.



Western Blot: Cdc2 Antibody [NB100-81834] - Western blot analysis of extracts from COLO (Lanes 1, 5) and HepG2 (Lanes 2, 6) and K562 (Lanes 3, 4, 7, 8) cells, using CDC2 antibody (Lanes 1, 2, 3 and 4) and CDC2 (phospho-Tyr15) antibody (Lanes 5, 6, 7 and 8).





### **Novus Biologicals USA**

8100 Southpark Way, A-8  
Littleton, CO 80120  
USA  
Phone: 303.730.1950  
Toll Free: 1.888.506.6887  
Fax: 303.730.1966  
novus@novusbio.com

### **Novus Biologicals Canada**

461 North Service Road West, Unit B37  
Oakville, ON L6M 2V5  
Canada  
Phone: 905.827.6400  
Toll Free: 855.668.8722  
Fax: 905.827.6402  
canada@novusbio.com

### **Novus Biologicals Europe**

19 Barton Lane  
Abingdon Science Park  
Abingdon, OX14 3NB, United Kingdom  
Phone: (44) (0) 1235 529449  
Free Phone: 0800 37 34 15  
Fax: (44) (0) 1235 533420  
info@bio-techne.com

### **General Contact Information**

www.novusbio.com  
Technical Support: technical@novusbio.com  
Orders: orders@novusbio.com  
General: novus@novusbio.com

### **Products Related to NB100-81834**

---

NBL1-08991	CDC2/CDK1 Overexpression Lysate (Native)
NBP2-33376H	Blue Marker Antibody (6F4-F6) [HRP]
NB7160	Goat anti-Rabbit IgG Antibody [HRP]
H00000983-P01-10ug	CDC2/CDK1 Recombinant Protein

---

### **Limitations**

This product is for research use only and is not approved for use in humans or in clinical diagnosis. Primary Antibodies are guaranteed for 1 year from date of receipt.

**For more information on our guarantee, please visit [www.novusbio.com/guarantee](http://www.novusbio.com/guarantee).**

