

# Product Datasheet

## Progesterone Receptor Antibody NB100-80036

Unit Size: 0.1 ml

Store at -20C. Avoid freeze-thaw cycles.

[www.novusbio.com](http://www.novusbio.com)



[support@novusbio.com](mailto:support@novusbio.com)

### Publications: 1

Protocols, Publications, Related Products, Reviews, Research Tools and Images at:  
[www.novusbio.com/NB100-80036](http://www.novusbio.com/NB100-80036)

Updated 3/5/2011 v.20.1

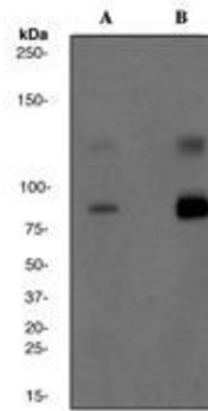
**NB100-80036**

## Progesterone Receptor [p Ser190] Antibody (EP1516Y)

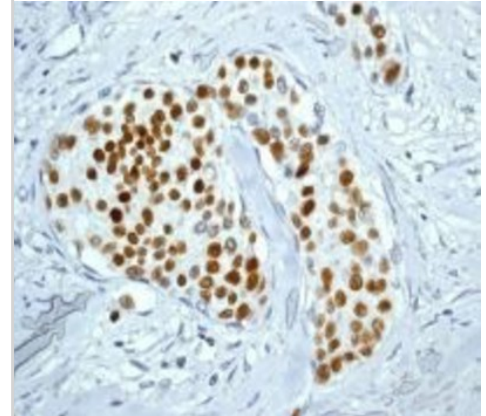
Product Information	
Unit Size	0.1 ml
Concentration	This product is unpurified. The exact concentration of antibody is not quantifiable.
Storage	Store at -20C. Avoid freeze-thaw cycles.
Clonality	Monoclonal
Clone	EP1516Y
Preservative	0.01% Sodium Azide
Isotype	IgG
Purity	Tissue culture supernatant
Buffer	PBS 49%, Glycerol 50%, BSA 0.05%
Product Description	
Host	Rabbit
Gene ID	5241
Gene Symbol	PGR
Species	Human, Mouse (Negative), Rat (Negative)
Species Reactivity	Reacts with: Human Does not react with Mouse, Rat
Specificity/Sensitivity	This antibody detects PR phosphorylated at serine 190.
Immunogen	A phospho specific peptide corresponding to residues surrounding serine 190 of human PR was used as an immunogen.
Notes	Manufactured incorporating RabMAb® technology under Epitomics US patents, No 5675,063 and 7,429,487, owned by Abcam.
Product Application Details	
Applications	Western Blot, Immunocytochemistry/Immunofluorescence, Immunohistochemistry, Immunohistochemistry-Paraffin, Immunoprecipitation
Recommended Dilutions	Immunocytochemistry/Immunofluorescence 1:100-250, Immunohistochemistry 1:10-1:2000, Immunohistochemistry-Paraffin 1:100-250, Immunoprecipitation 1:50, Western Blot 1:1000-10000
Application Notes	This product is useful for: Western Blot, Immunohistochemistry-Paraffin, Immunocytochemistry, Immunoprecipitation. In Western blot this antibody detects a band at approximately 90/118kDa.

## Images

Western Blot: Progesterone Receptor [p Ser190] Antibody (EP1516Y) [NB100-80036] T47D cell lysates, 1:10,000 dilution. Cells were either (A) untreated (B) treated with progesterone.



Immunohistochemistry: Progesterone Receptor [p Ser190] Antibody (EP1516Y) [NB100-80036] - Immunohistochemical analysis of paraffin-embedded human breast carcinoma using anti-Phospho-PR.



## Publications

Harigopal M, Barlow WE, Tedeschi G et al. Multiplexed assessment of the Southwest Oncology Group-directed Intergroup Breast Cancer Trial S9313 by AQUA shows that both high and low levels of HER2 are associated with poor outcome. *Am J Pathol* 2010 Apr [PMID: 20150438]



### **Novus Biologicals USA**

8100 Southpark Way, A-8  
Littleton, CO 80120  
USA  
Phone: 303.730.1950  
Toll Free: 1.888.506.6887  
Fax: 303.730.1966  
novus@novusbio.com

### **Novus Biologicals Canada**

461 North Service Road West, Unit B37  
Oakville, ON L6M 2V5  
Canada  
Phone: 905.827.6400  
Toll Free: 855.668.8722  
Fax: 905.827.6402  
canada@novusbio.com

### **Novus Biologicals Europe**

12 Cambridge Science Park  
Cambridge, CB4 0FQ  
United Kingdom  
Phone: +44 (0)1223 426001  
Fax: +44 (0)871 971 1635  
europe@novusbio.com

### **General Contact Information**

www.novusbio.com  
Technical Support: technical@novusbio.com  
Orders: orders@novusbio.com  
General: novus@novusbio.com

### **Products Related to NB100-80036**

---

NB810-56910	Rabbit IgG Isotype Control
H00005241-R02-20nmol	Progesterone Receptor RNAi
H00005241-Q01-10ug	Progesterone Receptor Partial Recombinant Protein
NB730-H	Goat anti-Rabbit IgG Antibody [HRP]

---

### **Limitations**

This product is for research use only and is not approved for use in humans or in clinical diagnosis. Primary Antibodies are guaranteed for 1 year from date of receipt.

**For more information on our guarantee, please visit [www.novusbio.com/guarantee](http://www.novusbio.com/guarantee).**

