

Product Datasheet

Cyclin D1 Antibody NB100-79920

Unit Size: 0.1 ml

Store at -20C. Avoid freeze-thaw cycles.

www.novusbio.com



support@novusbio.com

Reviews: 1 Publications: 1

Protocols, Publications, Related Products, Reviews, Research Tools and Images at:
www.novusbio.com/NB100-79920

Updated 6/15/2014 v.20.1

NB100-79920

Cyclin D1 Antibody (EPR2241)

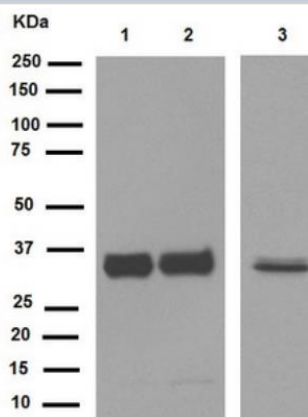
Product Information	
Unit Size	0.1 ml
Concentration	Please see the vial label for concentration. If unlisted please contact technical services.
Storage	Store at -20C. Avoid freeze-thaw cycles.
Clonality	Monoclonal
Clone	EPR2241
Preservative	0.01% Sodium Azide
Isotype	IgG
Purity	Protein A purified
Buffer	40% Glycerol, 0.05% BSA, 59% PBS, pH: 7.40
Target Molecular Weight	34 kDa

Product Description	
Host	Rabbit
Gene ID	595
Gene Symbol	CCND1
Species	Human, Mouse, Rat
Immunogen	A synthetic peptide corresponding to residues near the C-terminus of human Cyclin D1 (within amino acids 245-295) was used as an immunogen.
Notes	Produced using Abcam's RabMab® technology. RabMab® technology is covered by the following U.S. Patents, No. 5,675,063 and/or 7,429,487.

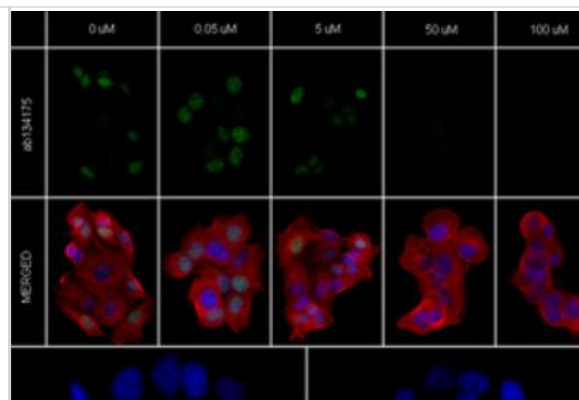
Product Application Details	
Applications	Western Blot, Immunocytochemistry/Immunofluorescence, Immunohistochemistry, Immunohistochemistry-Paraffin, Immunoprecipitation
Recommended Dilutions	Immunocytochemistry/Immunofluorescence 1:100, Immunohistochemistry 1:10-1:500, Immunohistochemistry-Paraffin 1:100, Immunoprecipitation 1:40, Western Blot 1:10000
Application Notes	In Western blot this antibody detects a band at approximately 35 kDa.

Images

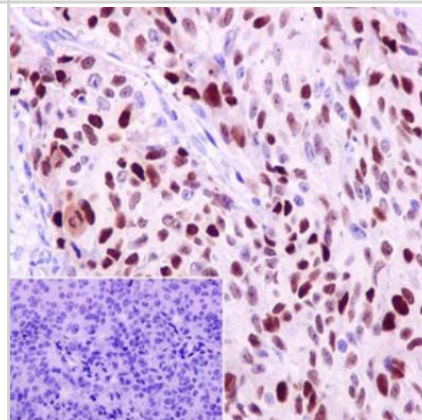
Western Blot: Cyclin D1 Antibody (EPR2241) [NB100-79920] - Lane 1 : Mouse kidney. Lane 2 : Mouse spleen. Lane 3 : Rat heart.



Immunocytochemistry/Immunofluorescence: Cyclin D1 Antibody (EPR2241) [NB100-79920] - MCF7 cells.



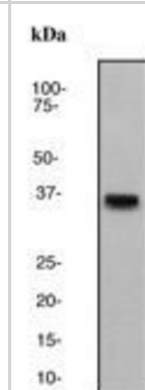
Immunohistochemistry-Paraffin: Cyclin D1 Antibody (EPR2241) [NB100-79920] - Staining of paraffin embedded human endometrial adenocarcinoma. PBS was used instead of the primary antibody as the negative control, and is shown in the inset.



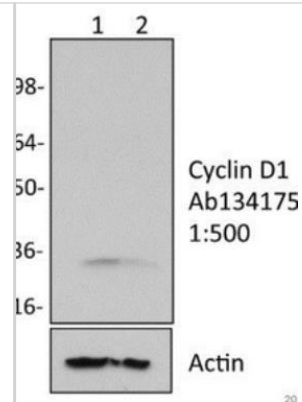
Western Blot: Cyclin D1 Antibody (EPR2241) [NB100-79920] - MG-63 cells.



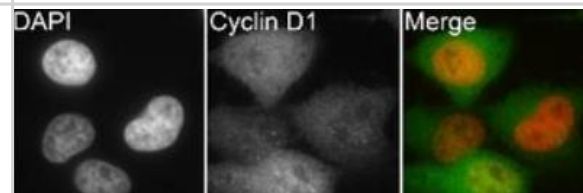
Western Blot: Cyclin D1 Antibody (EPR2241) [NB100-79920] - MCF-7 cell lysate using a 1:50,000 dilution.



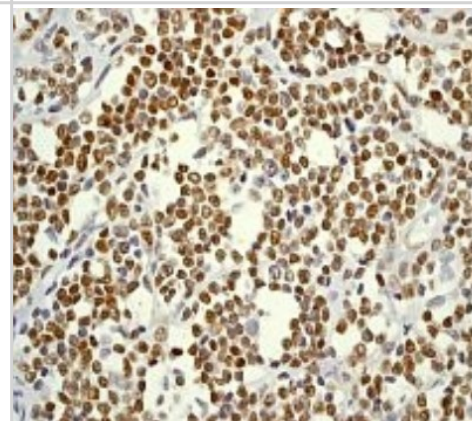
Western Blot: Cyclin D1 Antibody (EPR2241) [NB100-79920] - Lane 1 : Human osteosarcoma whole cell lysate - control, non-targeting siRNA. Lane 2 : Human osteosarcoma whole cell lysate - siRNA for Cyclin D1.



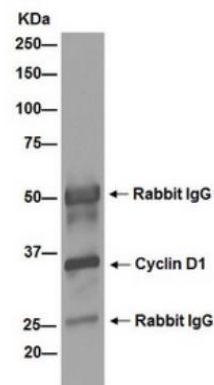
Immunocytochemistry/Immunofluorescence: Cyclin D1 Antibody (EPR2241) [NB100-79920] - Staining Cyclin D1 in human HeLa cell.



Immunohistochemistry: Cyclin D1 Antibody (EPR2241) [NB100-79920] - Immunohistochemical analysis of paraffin-embedded human mantle cell lymphoma using Cyclin D1 Antibody.



Immunoprecipitation: Cyclin D1 Antibody (EPR2241) [NB100-79920] - A431 cells.



Publications

Fan CW, Chen CY, Chen KT et al. Blockade of phospholipid scramblase 1 with its N-terminal domain antibody reduces tumorigenesis of colorectal carcinomas in vitro and in vivo. J Transl Med 2012 Dec 24 [PMID: 23259795] (WB, Human)





Novus Biologicals USA

8100 Southpark Way, A-8
Littleton, CO 80120
USA
Phone: 303.730.1950
Toll Free: 1.888.506.6887
Fax: 303.730.1966
novus@novusbio.com

Novus Biologicals Canada

461 North Service Road West, Unit B37
Oakville, ON L6M 2V5
Canada
Phone: 905.827.6400
Toll Free: 855.668.8722
Fax: 905.827.6402
canada@novusbio.com

Novus Biologicals Europe

19 Barton Lane
Abingdon Science Park
Abingdon, OX14 3NB, United Kingdom
Phone: (44) (0) 1235 529449
Free Phone: 0800 37 34 15
Fax: (44) (0) 1235 533420
info@bio-techne.com

General Contact Information

www.novusbio.com
Technical Support: technical@novusbio.com
Orders: orders@novusbio.com
General: novus@novusbio.com

Products Related to NB100-79920

NBL1-08871	Cyclin D1 Overexpression Lysate (Native)
NBP2-33376H	Blue Marker Antibody (6F4-F6) [HRP]
NB7160	Goat anti-Rabbit IgG Antibody [HRP]
NB810-56910-10mg	Rabbit IgG Isotype Control

Limitations

This product is for research use only and is not approved for use in humans or in clinical diagnosis. Primary Antibodies are guaranteed for 1 year from date of receipt.

For more information on our guarantee, please visit www.novusbio.com/guarantee.

