

Product Datasheet

alpha Tubulin Antibody NB100-690SS

Unit Size: 0.025 ml

Store at 4C short term. Aliquot and store at -20C long term. Avoid freeze-thaw cycles.

www.novusbio.com



support@novusbio.com

Reviews: 10 Publications: 31

Protocols, Publications, Related Products, Reviews, Research Tools and Images at:
www.novusbio.com/NB100-690

Updated 6/15/2014 v.20.1

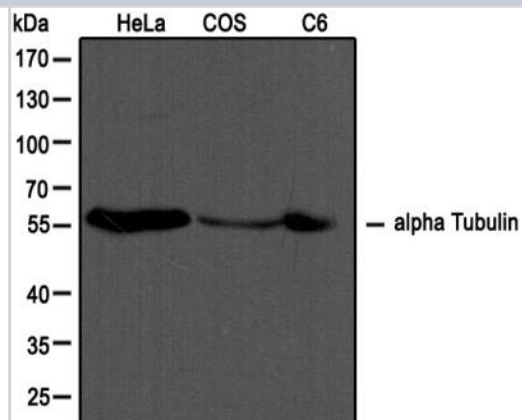
NB100-690SS

alpha Tubulin Antibody (DM1A)

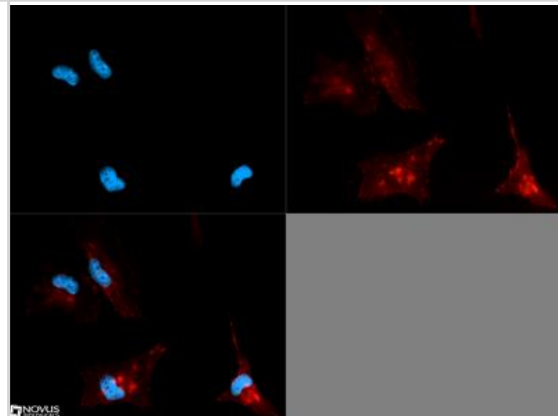
| Product Information | |
|------------------------------------|---|
| Unit Size | 0.025 ml |
| Concentration | 1.0 mg/ml |
| Storage | Store at 4C short term. Aliquot and store at -20C long term. Avoid freeze-thaw cycles. |
| Clonality | Monoclonal |
| Clone | DM1A |
| Preservative | 0.05% Sodium Azide |
| Isotype | IgG1 Kappa |
| Purity | Protein G purified |
| Buffer | Tris-glycine, 150 mM NaCl |
| Target Molecular Weight | 55 kDa |
| Product Description | |
| Host | Mouse |
| Gene ID | 7846 |
| Gene Symbol | TUBA1A |
| Species | Human, Mouse, Rat, Avian, Bovine, Canine, Chicken, Chinese Hamster, Drosophila, Fungi, Guinea Pig, Primate, Porcine, Rabbit, Xenopus, Yeast |
| Species Reactivity | Human, mouse, rat, porcine, bovine, canine, chicken, guinea pig, Chinese hamster, monkey, avian, rabbit, Drosophila fungi and Xenopus. Yeast reactivity reported in scientific literature (PMID: 25126732). Will likely react with all mammals. |
| Marker | Microtubule Marker |
| Specificity/Sensitivity | Does not cross-react with beta Tubulin. |
| Immunogen | Native chicken brain microtubules. |
| Product Application Details | |
| Applications | Western Blot, Simple Western, Flow Cytometry, Immunocytochemistry/Immunofluorescence, Immunohistochemistry, Immunohistochemistry-Frozen, Immunohistochemistry-Paraffin, Immunoprecipitation |
| Recommended Dilutions | Immunohistochemistry 1:100-1:500, Immunohistochemistry-Frozen 1:100-1:500, Immunohistochemistry-Paraffin 1:100-1:500, Immunoprecipitation 1:50-1:100, Western Blot 1:5000, Flow Cytometry 1 ug per million cells, Immunocytochemistry/Immunofluorescence 1:50000-1:100000, Simple Western 1:50 |
| Application Notes | This alpha Tubulin Antibody (DM1A) is useful for Western blot, Immunoprecipitation, Immunohistochemistry on paraffin-embedded and frozen sections, Immunocytochemistry/Immunofluorescence and Flow Cytometry. NB100-690 is ideal for use as a Western blot loading control, where a band can be seen around 50-55 kDa and as a cytoskeletal marker in ICC. For IHC-Paraffin, antigen retrieval is not essential, but may optimize staining. In Simple Western only 10-15 uL of the recommended dilution is used per data point. |

Images

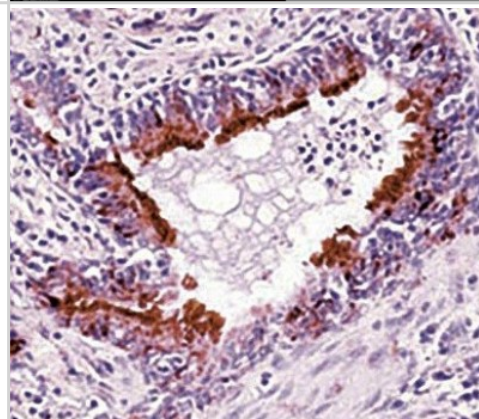
Western Blot: alpha Tubulin Antibody (DM1A) [NB100-690] - Western blot analysis of extracts from HeLa, COS and C6 cells using alpha Tubulin antibody (NB100-690, 1:1000).



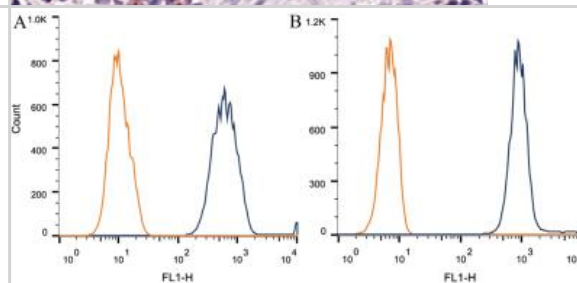
Immunocytochemistry/Immunofluorescence: alpha Tubulin Antibody (DM1A) [NB100-690] - Alpha tubulin antibody was tested at 1:100K in HeLa cells with Dylight 550 (red). Nuclei were counterstained with DAPI (blue). Image objective 40x.



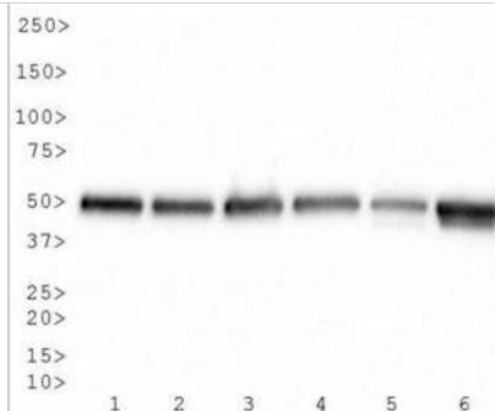
Immunohistochemistry-Paraffin: alpha Tubulin Antibody (DM1A) [NB100-690] - Formalin fixed paraffin embedded human lung.



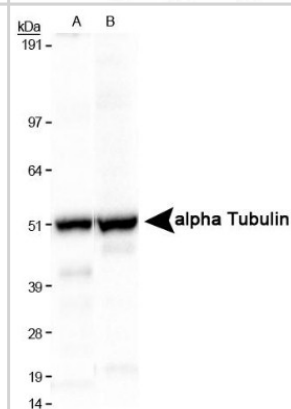
Flow Cytometry: alpha Tubulin Antibody (DM1A) [NB100-690] - Intracellular flow cytometric staining of 1×10^6 CHO (A) and HEK-293 (B) cells using alpha Tubulin antibody (dark blue). Isotype control shown in orange. An antibody concentration of $1 \mu\text{g}/1 \times 10^6$ cells was used.



Western Blot: alpha Tubulin Antibody (DM1A) [NB100-690] - Analysis of alpha Tubulin expression in 1) HeLa, 2) NIH-3T3, 3) PC-12, 4) Cos-7, 5) CHO whole cell lysates and 6) pig brain tissue.



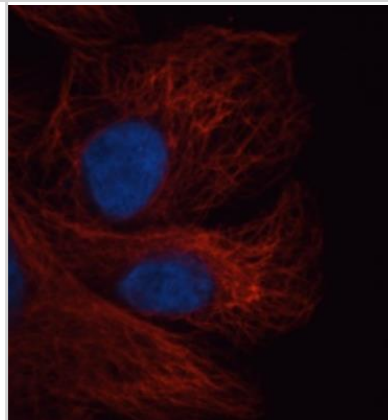
Western Blot: alpha Tubulin Antibody (DM1A) [NB100-690] - Analysis of alpha Tubulin expression in A) HeLa and B) NIH-3T3 whole cell lysates. NB100-690 was used at a dilution of 1/5000.



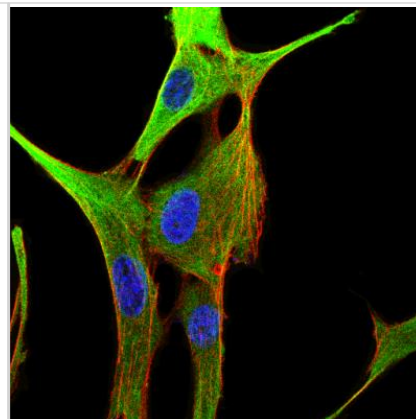
Immunocytochemistry/Immunofluorescence: alpha Tubulin Antibody (DM1A) [NB100-690] - Staining of NTERa2 cells using NB100-690 (Red) at a 1:1000 dilution with Dylight-549. Nuclei were visualized using Hoechst 33258 (Blue).



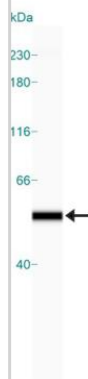
Immunocytochemistry/Immunofluorescence: alpha Tubulin Antibody (DM1A) [NB100-690] - IF analysis of alpha Tubulin in Human MDA-MB-231 cells. Verified customer review from 1DegreeBio.



Immunocytochemistry/Immunofluorescence: alpha Tubulin Antibody (DM1A) [NB100-690] - IF Confocal analysis of C6 cells using alpha Tubulin antibody (NB100-690, 1:50). An Alexa Fluor 488-conjugated Goat to mouse IgG was used as secondary antibody (green, A). Actin filaments were labeled with Alexa Fluor 568 phalloidin (red, B). DAPI was used to stain the cell nuclei (blue, C).



Simple Western: alpha Tubulin Antibody (DM1A) [NB100-690] - Simple Western lane view shows a specific band for alpha Tubulin in 1.0 mg/ml of HeLa lysate. This experiment was performed under reducing conditions using the 12-230 kDa separation system.



Publications

Xiang L, Gilkes DM, Hu H et al. Hypoxia-inducible factor 1 mediates TAZ expression and nuclear localization to induce the breast cancer stem cell phenotype. *Oncotarget*. 2014 [PMID: 25587023] (WB, Human)

Levine B. Autophagy is required for G1/G0 quiescence in response to nitrogen starvation in *Saccharomyces cerevisiae*. *Autophagy*. 2014 Aug 12 [PMID: 25126732] (ICC/IF, Yeast)

Details:

alpha Tubulin antibody used for ICC-IF on yeast strains - VPS30 delta/ATG6 delta, ATG7 delta, PEP4 delta subjected or not to starvation with nitrogen starvation medium/SD-N for 4 hours (Figure 4A).

Yu Q, Zhang B, Yang B et al. Interaction between the Vacuole, the Mitochondria and Oxidative Stress Response Is Governed by the Transient Receptor Potential Channel in *Candida albicans*. *Free Radic. Biol. Med.* 2014 Oct 09 [PMID: 25308698] (WB)

Rucker H, Amslinger S. Identification of heme oxygenase-1 stimulators by a convenient ELISA-based bilirubin quantification assay. *Free Radical Biology and Medicine*. 2014 Oct 23 [PMID: 25462643] (WB, Mouse)

Details:

alpha Tubulin antibody used as a loading control for WB application (1:500 dilution, ECL detection, sharp band at 57kDa position) in experiments involving stimulation of murine macrophage RAW264.7 cells.

Doria ML, Ribeiro AS, Wang J et al. Fatty acid and phospholipid biosynthetic pathways are regulated throughout mammary epithelial cell differentiation and correlate to breast cancer survival *FASEB J.* 2014 Jun 26 [PMID: 24970396] (WB, Mouse)

Details:

alpha Tubulin antibody used as loading control in WB for lysates of differentiating mammary epithelial cell line HC11 (Figure 3B, Figure 4C)

Stoeckelhuber M, Olzowy B, Ihler F et al. Immunolocalization of antimicrobial and cytoskeletal components in the serous glands of human sinonasal mucosa. *Histol. Histopathol.* 2014 Apr 15 [PMID: 24737387] (IHC-P, Human)

Weng CM, Yu CC, Kuo ML, Lin CH. Endothelin-1 induces connective tissue growth factor expression in human lung fibroblasts by ETAR-dependent JNK/AP-1 pathway. *Biochem. Pharmacol.* 2014 Feb 21 [PMID: 24486572] (WB, Human)

Ko WC, Chen BC, Hsu MJ et al. Thrombin induced connective tissue growth factor expression in rat vascular smooth muscle cells via the PAR-1/JNK/AP-1 pathway. *Acta Pharmacol Sin.* 2012 Jan [PMID: 22212430] (WB, Rat)

Chandley MJ, Szebeni K, Szebeni A et al. Gene expression deficits in pontine locus coeruleus astrocytes in men with major depressive disorder. *J Psychiatry Neurosci* 2013 Jul [PMID: 23415275] (WB, Human)

Barayuga SM, Pang X, Andres MA et al. Methamphetamine decreases levels of glutathione peroxidases 1 and 4 in SH-SY5Y neuronal cells: Protective effects of selenium. *Neurotoxicology* 2013 May 27 [PMID: 23721877] (WB, Human)

Cheng X, Xu N, Yu Q et al. Novel insight into the expression and function of the multicopper oxidases in *Candida albicans*. *Microbiology* 2013 Apr 11 [PMID: 23579686] (WB, Fungi)

Kim KW, Lee JM, Jeon YS et al. Vascular disrupting effect of CKD-516: preclinical study using DCE-MRI *Invest New Drugs* 2013 Jan 9 [PMID: 23299389] (ICC/IF, IHC-Fr, Human, Rabbit)

More publications at <http://www.novusbio.com/NB100-690>





Novus Biologicals USA

8100 Southpark Way, A-8
Littleton, CO 80120
USA
Phone: 303.730.1950
Toll Free: 1.888.506.6887
Fax: 303.730.1966
novus@novusbio.com

Novus Biologicals Canada

461 North Service Road West, Unit B37
Oakville, ON L6M 2V5
Canada
Phone: 905.827.6400
Toll Free: 855.668.8722
Fax: 905.827.6402
canada@novusbio.com

Novus Biologicals Europe

19 Barton Lane
Abingdon Science Park
Abingdon, OX14 3NB, United Kingdom
Phone: (44) (0) 1235 529449
Free Phone: 0800 37 34 15
Fax: (44) (0) 1235 533420
info@bio-techne.com

General Contact Information

www.novusbio.com
Technical Support: technical@novusbio.com
Orders: orders@novusbio.com
General: novus@novusbio.com

Limitations

This product is for research use only and is not approved for use in humans or in clinical diagnosis. Primary Antibodies are guaranteed for 1 year from date of receipt.

For more information on our guarantee, please visit www.novusbio.com/guarantee.

