

Product Datasheet

Enolase 1 Antibody NB100-65252SS

Unit Size: 0.1 ml

Store at 4C short term. Aliquot and store at -20C long term. Avoid freeze-thaw cycles.

www.novusbio.com



support@novusbio.com

Publications: 1

Protocols, Publications, Related Products, Reviews, Research Tools and Images at:
www.novusbio.com/NB100-65252

Updated 6/15/2014 v.20.1

NB100-65252SS

Enolase 1 Antibody

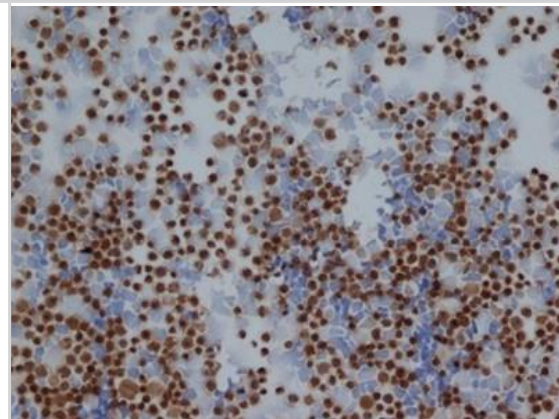
Product Information	
Unit Size	0.1 ml
Concentration	5 mg/ml
Storage	Store at 4C short term. Aliquot and store at -20C long term. Avoid freeze-thaw cycles.
Clonality	Polyclonal
Preservative	0.09% Sodium Azide
Purity	Protein G purified
Buffer	PBS, pH 7.2

Product Description	
Host	Rabbit
Gene ID	2023
Gene Symbol	ENO1
Species	Human, Bovine
Species Reactivity	Human. Bovine reactivity reported in scientific literature (PMID: 21051714).
Specificity/Sensitivity	This recognises human Non-neuronal enolase, and demonstrates less than 0.1% cross-reactivity with non-specific enolase. Non-neuronal enolase is a glycolytic enzyme composed of homodimeric alpha enolase subunits and is expressed in most human tissues. The gene coding for the 48kDa form of non-neuronal enolase also codes for a shorter 37kDa isoform, myc-binding protein 1 (MBP-1) lacking the N-terminal 93 amino acids of non-neuronal enolase.
Immunogen	Native human Enolase 1

Product Application Details	
Applications	Western Blot, ELISA, Immunohistochemistry, Immunohistochemistry-Frozen, Immunohistochemistry-Paraffin
Recommended Dilutions	ELISA 1:100-1:2000, Immunohistochemistry 1:10-1:500, Immunohistochemistry-Frozen 1:25-1:100, Immunohistochemistry-Paraffin 1:25-1:100, Western Blot 1:100-1:2000

Images

Immunocytochemistry/Immunofluorescence: Enolase 1 Antibody [NB100-65252] - Staining of Jurkat cells with rabbit anti human Enolase 1 .



Publications

Smith WC, Bolch S, Dugger DR et al. Interaction of arrestin with enolase1 in photoreceptors. Invest Ophthalmol Vis Sci. 2011 Mar 29 [PMID: 21051714] (WB, Bovine)





Novus Biologicals USA

8100 Southpark Way, A-8
Littleton, CO 80120
USA
Phone: 303.730.1950
Toll Free: 1.888.506.6887
Fax: 303.730.1966
novus@novusbio.com

Novus Biologicals Canada

461 North Service Road West, Unit B37
Oakville, ON L6M 2V5
Canada
Phone: 905.827.6400
Toll Free: 855.668.8722
Fax: 905.827.6402
canada@novusbio.com

Novus Biologicals Europe

12 Cambridge Science Park
Cambridge, CB4 0FQ
United Kingdom
Phone: +44 (0)1223 426001
Fax: +44 (0)871 971 1635
europe@novusbio.com

General Contact Information

www.novusbio.com
Technical Support: technical@novusbio.com
Orders: orders@novusbio.com
General: novus@novusbio.com

Limitations

This product is for research use only and is not approved for use in humans or in clinical diagnosis. Primary Antibodies are guaranteed for 1 year from date of receipt.

For more information on our guarantee, please visit www.novusbio.com/guarantee.

