

Product Datasheet

BRCA1 Antibody NB100-600SS

Unit Size: 0.025 ml

Aliquot and store at -20C or -80C. Avoid freeze-thaw cycles.

www.novusbio.com



support@novusbio.com

Publications: 4

Protocols, Publications, Related Products, Reviews, Research Tools and Images at:
www.novusbio.com/NB100-600

Updated 6/15/2014 v.20.1

NB100-600SS

BRCA1 Antibody (MU)

Product Information	
Unit Size	0.025 ml
Concentration	1.9 mg/ml
Storage	Aliquot and store at -20C or -80C. Avoid freeze-thaw cycles.
Clonality	Monoclonal
Clone	MU
Preservative	0.05% Sodium Azide
Isotype	IgG2b Kappa
Purity	Protein G purified
Buffer	Tris-glycine, 150 mM NaCl
Target Molecular Weight	240 kDa

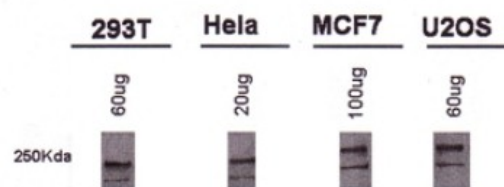
Product Description	
Host	Mouse
Gene ID	672
Gene Symbol	BRCA1
Species	Human
Species Reactivity	Human.
Immunogen	Human BRCA1 corresponding to residues 1314-1864 [UniProt# P38398]

Product Application Details	
Applications	Western Blot, Flow Cytometry, Immunocytochemistry/Immunofluorescence, Immunoprecipitation
Recommended Dilutions	Flow Cytometry 1 ug per million cells, Immunocytochemistry/Immunofluorescence, Immunoprecipitation 1:10-1:500, Western Blot 2-4 ug/ml
Application Notes	In Western blot a band was observed ~220-240 kDa.

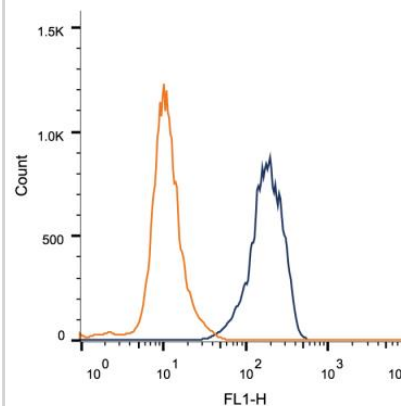


Images

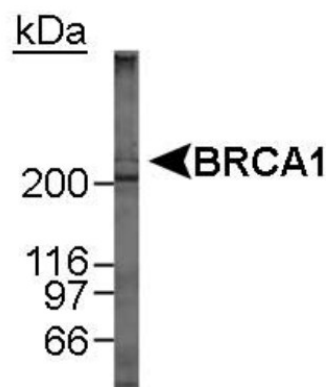
Western Blot: BRCA1 Antibody (MU) [NB100-600] - Detection of BRCA1 using NB100-600.



Flow Cytometry: BRCA1 Antibody (MU) [NB100-600] - Intracellular flow cytometric staining of 1×10^6 MCF-7 cells using BRCA1 antibody (dark blue). Isotype control shown in orange. An antibody concentration of $1 \mu\text{g}/1 \times 10^6$ cells was used.



Western Blot: BRCA1 Antibody (MU) [NB100-600] - Detection of BRCA1 in MCF-7 whole cell lysate using NB100-600. 12 minute ECL exposure.



Publications

Martin NT, Nakamura K, Paila U et al. Homozygous mutation of MTPAP causes cellular radiosensitivity and persistent DNA double-strand breaks. *Cell Death Dis* 2014 Mar 21 [PMID: 24651433] (ICC/IF, Human)

Aglipay, JA et al. ATM activation by ionizing radiation requires BRCA1-associated BAAT1. *J Biol Chem*;281(14):9710-8. 2006 Apr 7. [PMID: 16452482]

Martin NT, Nahas SA, Tunuguntla R et al. Assessing radiosensitivity with kinetic profiles of gamma-H2AX, 53BP1 and BRCA1 foci. *Radiother Oncol*. 2011 Jun 29. [PMID: 21722985] (ICC/IF, Human)

Okada, S et al. Cell cycle differences in DNA damage-induced BRCA1 phosphorylation affect its subcellular localization. *J Biol Chem*;278(3):2015-20. 2003 Jan 17. [PMID: 12427729]

Procedures

Protocol specific for BRCA1 Antibody (NB100-600)

Western Blot Protocol

1. Perform SDS-PAGE (3-8%) on samples to be analyzed, loading 50ug of total protein per lane.
2. Transfer proteins to Nitrocellulose according to the instructions provided by the manufacturer of the transfer apparatus.
3. Stain the blot using ponceau S for 1-2 minutes to access the transfer of proteins onto the nitrocellulose membrane. Rinse the blot in water to remove excess stain and mark the lane locations and locations of molecular weight markers using a pencil.
4. Rinse the blot in TBS for approximately 5 minutes.
5. Block the membrane using 5% non-fat dry milk in TBS + 0.5% BSA for 1 hour.
6. Dilute the mouse anti-BRCA1 primary antibody (NB 100-600) in blocking buffer and incubate 2-2.5 hours at room temperature.
7. Wash the membrane in water for 5 minutes and apply the diluted mouse-IgG HRP-conjugated secondary antibody in blocking buffer (as per manufacturer's instructions) and incubate 1 hour at room temperature.
8. Wash the blot in TBS containing 0.05-0.1% Tween-20 for 10-20 minutes.
9. Wash the blot in type I water for an additional 10-20 minutes (this step can be repeated as required to reduce background).
10. Apply the detection reagent of choice in accordance with the manufacturer's instructions (Amersham's ECL is the standard reagent used at Novus Biologicals).

Note: Tween-20 can be added to the blocking buffer at a final concentration of 0.05-0.2%, provided it does not interfere with antibody-antigen binding.





Novus Biologicals USA

8100 Southpark Way, A-8
Littleton, CO 80120
USA
Phone: 303.730.1950
Toll Free: 1.888.506.6887
Fax: 303.730.1966
novus@novusbio.com

Novus Biologicals Canada

461 North Service Road West, Unit B37
Oakville, ON L6M 2V5
Canada
Phone: 905.827.6400
Toll Free: 855.668.8722
Fax: 905.827.6402
canada@novusbio.com

Novus Biologicals Europe

19 Barton Lane
Abingdon Science Park
Abingdon, OX14 3NB, United Kingdom
Phone: (44) (0) 1235 529449
Free Phone: 0800 37 34 15
Fax: (44) (0) 1235 533420
info@bio-techne.com

General Contact Information

www.novusbio.com
Technical Support: technical@novusbio.com
Orders: orders@novusbio.com
General: novus@novusbio.com

Limitations

This product is for research use only and is not approved for use in humans or in clinical diagnosis. Primary Antibodies are guaranteed for 1 year from date of receipt.

For more information on our guarantee, please visit www.novusbio.com/guarantee.

