

Product Datasheet

CREB Antibody NB100-410SS

Unit Size: 0.025 ml

Store at -20C. Avoid freeze-thaw cycles.

www.novusbio.com



support@novusbio.com

Publications: 6

Protocols, Publications, Related Products, Reviews, Research Tools and Images at:
www.novusbio.com/NB100-410

Updated 6/15/2014 v.20.1

NB100-410SS

CREB [p Ser121] Antibody

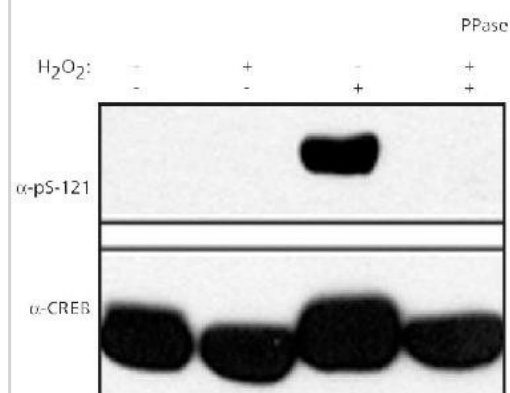
Product Information	
Unit Size	0.025 ml
Concentration	0.3 mg/ml
Storage	Store at -20C. Avoid freeze-thaw cycles.
Clonality	Polyclonal
Preservative	0.05% Sodium Azide
Purity	Immunogen affinity purified
Buffer	Tris 50% glycerol

Product Description	
Host	Rabbit
Gene ID	1385
Gene Symbol	CREB1
Species	Human, Mouse
Species Reactivity	Human and mouse.
Immunogen	A phospho-peptide spanning the Ser121 phosphorylation site of human CREB [UniProt# P16220]

Product Application Details	
Applications	Western Blot, Immunoprecipitation
Recommended Dilutions	immunoprecipitation 0.5 ug, Western Blot 1:500
Application Notes	This CREB [p Ser121] antibody is useful for Immunoprecipitation and Western blot.

Images

Western Blot: CREB [p Ser121] Antibody [NB100-410] - Detection of phospho-CREB in human HEK 293T cells. Top panel: probed with NB 100-410. Bottom panel: probed with CREB antibody. Lanes 2 and 4 treated with lambda phosphatase, lanes 3 and 4 treated with 0.2mM H2O2.



Publications

Shanware NP et al. Coregulated ataxia telangiectasia-mutated and casein kinase sites modulate cAMP-response element-binding protein-coactivator interactions in response to DNA damage. *J Biol Chem*;282(9):6283-91. 2007 Mar 2. [PMID: 17209043]

Shi Y et al. Ataxia-telangiectasia-mutated (ATM) is a T-antigen kinase that controls SV40 viral replication in vivo. *J Biol Chem*;280(48):40195-200. 2005 Dec 2. [PMID: 16221684]

Byrd PJ, Srinivasan V, Last JI et al. Severe reaction to radiotherapy for breast cancer as the presenting feature of ataxia telangiectasia. *Br J Cancer*. 2011 Dec 6. [PMID: 22146522]

Shi Y et al. Identification of carboxyl-terminal MCM3 phosphorylation sites using polyreactive phosphospecific antibodies. *J Biol Chem*;282 (12):9236-43. 2007 Mar 23. [PMID: 17244605]

Dodson GE, Tibbetts RS. DNA replication stress-induced phosphorylation of cyclic AMP response element-binding protein mediated by ATM. *J Biol Chem*;281(3):1692-7. 2006 Jan 20. [PMID: 16293623] (WB, Human)

Shi Y et al. Direct regulation of CREB transcriptional activity by ATM in response to genotoxic stress. *Proc Natl Acad Sci U S A*;101(16):5898-903. 2004 Apr 20. [PMID: 15073328]





Novus Biologicals USA

8100 Southpark Way, A-8
Littleton, CO 80120
USA
Phone: 303.730.1950
Toll Free: 1.888.506.6887
Fax: 303.730.1966
novus@novusbio.com

Novus Biologicals Canada

461 North Service Road West, Unit B37
Oakville, ON L6M 2V5
Canada
Phone: 905.827.6400
Toll Free: 855.668.8722
Fax: 905.827.6402
canada@novusbio.com

Novus Biologicals Europe

19 Barton Lane
Abingdon Science Park
Abingdon, OX14 3NB, United Kingdom
Phone: (44) (0) 1235 529449
Free Phone: 0800 37 34 15
Fax: (44) (0) 1235 533420
info@bio-techne.com

General Contact Information

www.novusbio.com
Technical Support: technical@novusbio.com
Orders: orders@novusbio.com
General: novus@novusbio.com

Limitations

This product is for research use only and is not approved for use in humans or in clinical diagnosis. Primary Antibodies are guaranteed for 1 year from date of receipt.

For more information on our guarantee, please visit www.novusbio.com/guarantee.

