

Product Datasheet

Mitofilin Antibody NB100-1919SS

Unit Size: 0.025 ml

Aliquot and store at -20C or -80C. Avoid freeze-thaw cycles.

www.novusbio.com



support@novusbio.com

Reviews: 1 Publications: 2

Protocols, Publications, Related Products, Reviews, Research Tools and Images at:
www.novusbio.com/NB100-1919

Updated 6/15/2014 v.20.1

NB100-1919SS

Mitofilin Antibody

Product Information	
Unit Size	0.025 ml
Concentration	This product is unpurified. The exact concentration of antibody is not quantifiable.
Storage	Aliquot and store at -20C or -80C. Avoid freeze-thaw cycles.
Clonality	Polyclonal
Preservative	0.05% Sodium Azide
Purity	Whole antisera

Product Description	
Host	Rabbit
Gene ID	10989
Gene Symbol	IMMT
Species	Human, Mouse, Rat, Canine, Feline
Species Reactivity	Human, mouse, rat, canine and feline. No other species have been tested.
Marker	Mitochondria Marker
Immunogen	Whole human recombinant Mitofilin [UniProt# Q16891]

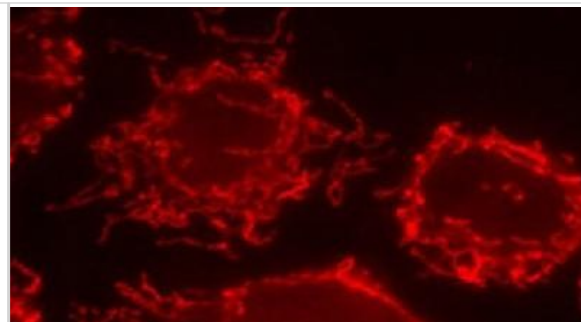
Product Application Details	
Applications	Western Blot, Immunocytochemistry/Immunofluorescence, Immunoprecipitation
Recommended Dilutions	Immunocytochemistry/Immunofluorescence 1:500, Immunoprecipitation, Western Blot 1:2000
Application Notes	This Mitofilin antibody is useful for Immunocytochemistry/Immunofluorescence and Western Blot, where two bands can be seen at approximately 87-90 kDa.

Images

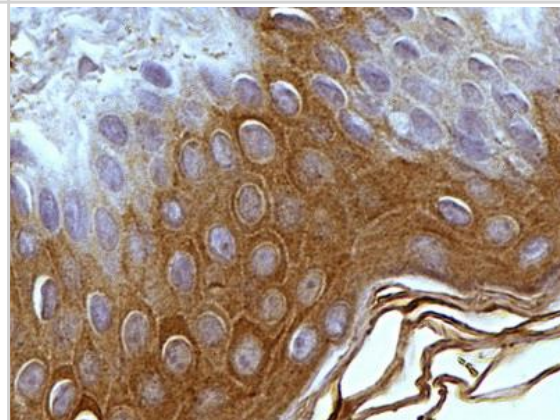
Western Blot: Mitofilin Antibody [NB100-1919] - Western blot of dog testis total protein extract 1:2000 dilution of antibody.



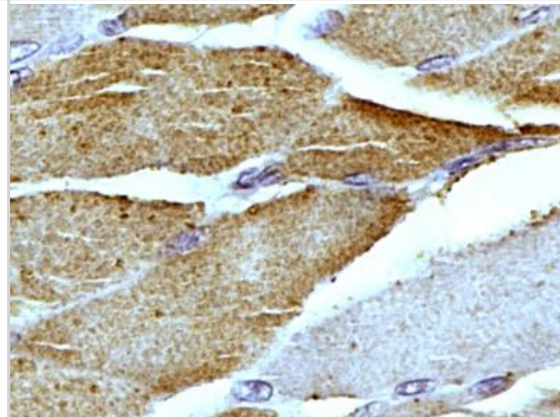
Immunocytochemistry/Immunofluorescence: Mitofilin Antibody [NB100-1919] - HeLa cells with antibody 1:500 dilution labeling mitochondria.



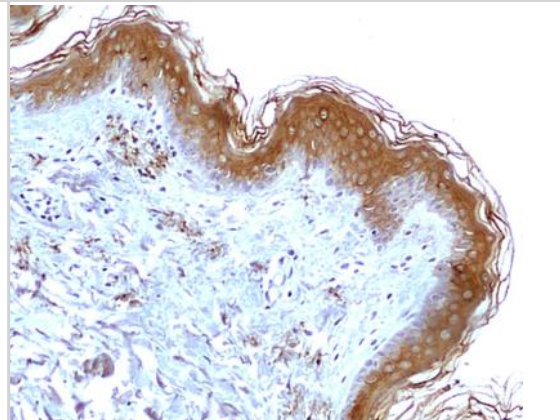
Immunohistochemistry-Paraffin: Mitofilin Antibody [NB100-1919] - IHC-P detection of Mitofilin/Mitochondrial inner membrane protein in a section of normal human skin using 5 ug/ml concentration of Mitofilin antibody. The representative image shows a specific and expected granular staining of Mitofilin in the keratinocytes as well as the other cells of epidermal layer with no staining in basal cells. [60X Magnification]



Immunohistochemistry-Paraffin: Mitofilin Antibody [NB100-1919] - IHC-P analysis of Mitofilin/Mitochondrial inner membrane protein in a transverse section of normal human skeletal muscle using 5 ug/ml concentration of Mitofilin antibody. The myocytes showed an expected and very specific granular staining in the cytoplasm. [10X Magnification]



Immunohistochemistry-Paraffin: Mitofilin Antibody [NB100-1919] - IHC-P detection of Mitofilin/Mitochondrial inner membrane protein in a section of normal human skin using 5 ug/ml concentration of Mitofilin antibody. Specific cytoplasmic positivity of Mitofilin was observed in the keratinocytes as well as other cells of the epidermal layer except for basal cells and dermal connective tissue. [10X Magnification]



Publications

Yang RF, Zhao GW, Liang ST et al. Mitofilin regulates cytochrome c release during apoptosis by controlling mitochondrial cristae remodeling *Biochem Biophys Res Commun* 2012 Oct 8 [PMID: 23058921] (WB, Human)

Odgren, PR et al. Molecular characterization of mitofilin (HMP), a mitochondria-associated protein with predicted coiled coil and intermembrane space targeting domains. *J Cell Sci*;109 (Pt 9):2253-64. 1996 Sep. [PMID: 8886976] (WB, ICC/IF, Human)





Novus Biologicals USA

8100 Southpark Way, A-8
Littleton, CO 80120
USA
Phone: 303.730.1950
Toll Free: 1.888.506.6887
Fax: 303.730.1966
novus@novusbio.com

Novus Biologicals Canada

461 North Service Road West, Unit B37
Oakville, ON L6M 2V5
Canada
Phone: 905.827.6400
Toll Free: 855.668.8722
Fax: 905.827.6402
canada@novusbio.com

Novus Biologicals Europe

19 Barton Lane
Abingdon Science Park
Abingdon, OX14 3NB, United Kingdom
Phone: (44) (0) 1235 529449
Free Phone: 0800 37 34 15
Fax: (44) (0) 1235 533420
info@bio-techne.com

General Contact Information

www.novusbio.com
Technical Support: technical@novusbio.com
Orders: orders@novusbio.com
General: novus@novusbio.com

Limitations

This product is for research use only and is not approved for use in humans or in clinical diagnosis. Primary Antibodies are guaranteed for 1 year from date of receipt.

For more information on our guarantee, please visit www.novusbio.com/guarantee.

