

# Product Datasheet

## LSD1 Antibody NB100-1762SS

Unit Size: 0.025 ml

Store at 4C short term. Aliquot and store at -20C long term. Avoid freeze-thaw cycles.

[www.novusbio.com](http://www.novusbio.com)



[support@novusbio.com](mailto:support@novusbio.com)

**Publications: 8**

Protocols, Publications, Related Products, Reviews, Research Tools and Images at:  
[www.novusbio.com/NB100-1762](http://www.novusbio.com/NB100-1762)

Updated 6/15/2014 v.20.1

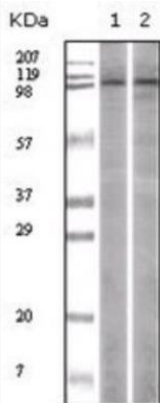
**NB100-1762SS**

## LSD1 Antibody (1B2E5)

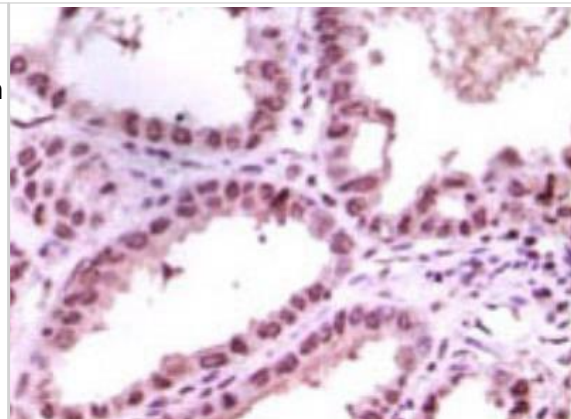
Product Information	
Unit Size	0.025 ml
Concentration	This product is unpurified. The exact concentration of antibody is not quantifiable.
Storage	Store at 4C short term. Aliquot and store at -20C long term. Avoid freeze-thaw cycles.
Clonality	Monoclonal
Clone	1B2E5
Preservative	0.03% Sodium Azide
Isotype	IgG1
Purity	Ascites
Target Molecular Weight	93 kDa

Product Description	
Host	Mouse
Gene ID	23028
Gene Symbol	KDM1A
Species	Human, Mouse, Primate
Species Reactivity	Human, mouse and monkey.
Marker	Nucleus Marker
Immunogen	Purified recombinant fragment of human LSD1 (between amino acids 400-600) expressed in E. coli. [UniProt# O60341]

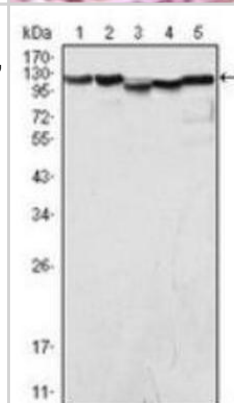
Product Application Details	
Applications	Western Blot, Simple Western, Chromatin Immunoprecipitation, ELISA, Immunohistochemistry, Immunohistochemistry-Paraffin
Recommended Dilutions	Immunohistochemistry-Paraffin 1:200-1:1000, Western Blot 1:500-1:2000, ELISA 1:10000, Immunohistochemistry 1:200-1:1000, Chromatin Immunoprecipitation, Simple Western 1:500
Application Notes	This LSD1 (1B2E5) antibody is useful for Western blot, Immunohistochemistry on paraffin-embedded sections and ELISA. In Simple Western only 10-15 uL of the recommended dilution is used per data point.

Images	
Western Blot: LSD1 Antibody (1B2E5) [NB100-1762] - Analysis of LSD1 expression in Hela (1) and Jurkat (2) whole cell lysates.	

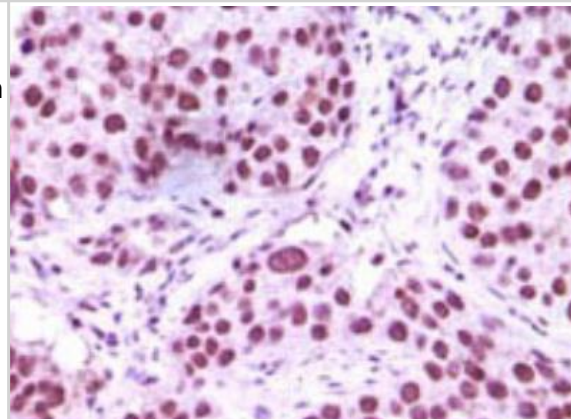
Immunohistochemistry-Paraffin: LSD1 Antibody (1B2E5) [NB100-1762] - Immunohistochemical analysis of paraffin-embedded Human Kidney Carcinoma tissue, showing nuclear localization using LSD1 antibody with DAB staining.



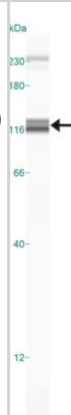
Western Blot: LSD1 Antibody (1B2E5) [NB100-1762] - Western blot analysis using LSD1 mouse mAb against COS (1), HeLa (2), NIH/3T3 (3), A549 (4) and Jurkat (5) cell lysate.



Immunohistochemistry-Paraffin: LSD1 Antibody (1B2E5) [NB100-1762] - Immunohistochemical analysis of paraffin-embedded Human Lung Carcinoma tissue, showing nuclear localization using LSD1 antibody with DAB staining.



Simple Western: LSD1 Antibody (1B2E5) [NB100-1762] - Simple Western lane view shows a specific band for LSD1 in 0.5 mg/ml of HeLa lysate. This experiment was performed under reducing conditions using the 12-230 kDa separation system. \*Non-specific interaction with the 230 kDa standard may be seen with this antibody.



## Publications

Pajtlér KW, Weingarten C, Thor T et al. The KDM1A histone demethylase is a promising new target for the epigenetic therapy of medulloblastoma. *Acta Neuropathol Commun.* 2013 May 29 [PMID: 24252778] (WB, IHC-P, Mouse, Human)

Kashyap V, Ahmad S, Nilsson EM et al. The lysine specific demethylase-1 (LSD1/KDM1A) regulates VEGF-A expression in prostate cancer. *Mol Oncol* 2013 Jan 19 [PMID: 23384557] (IHC, WB, Human)

Lim S, Janzer A, Becker A et al. Lysine-specific demethylase 1 (LSD1) is highly expressed in ER-negative breast cancers and a biomarker predicting aggressive biology *Carcinogenesis* 2010 Mar [PMID: 20042638] (IHC, ELISA, WB, ChIP, Human)

Serce N, Gnatzy A, Steiner S et al. Elevated expression of LSD1 (Lysine-specific demethylase 1) during tumour progression from pre-invasive to invasive ductal carcinoma of the breast *BMC Clin Pathol* 2012 Aug 24 [PMID: 22920283] (IHC, Human)

Schildhaus HU, Riegel R, Hartmann W, Steiner S, Wardelmann E, Merkelbach-Bruse S, Tanaka S, Sonobe H, Schule R, Buettner R, Kirfel J. Lysine-specific demethylase 1 is highly expressed in solitary fibrous tumors, synovial sarcomas, rhabdomyosarcomas, desmoplastic small round cell tumors, and malignant peripheral nerve sheath tumors. *Hum Pathol*;42(11):1667-75. 2011 Nov. [PMID: 21531005] (IHC, WB, Human)

Kauffman EC, Robinson BD, Downes MJ, Powell LG, Lee MM, Scherr DS, Gudas LJ, Mongan NP. Role of androgen receptor and associated lysine-demethylase coregulators, LSD1 and JMJD2A, in localized and advanced human bladder cancer. *Mol Carcinog*;50(12):931-44. 2011 Dec. [PMID: 21400613] (IHC, Human)

Janzer A, Lim S, Fronhoffs F, Niazy N, Buettner R, Kirfel J. Lysine-specific demethylase 1 (LSD1) and histone deacetylase 1 (HDAC1) synergistically repress proinflammatory cytokines and classical complement pathway components. *Biochem Biophys Res Commun.* 2012 Apr 17. [PMID: 22542627] (ChIP, WB, Human)

Bennani-Baiti IM, Machado I, Llombart-Bosch A, Kovar H. Lysine-specific demethylase 1 (LSD1/KDM1A/AOF2/BHC110) is expressed and is an epigenetic drug target in chondrosarcoma, Ewing's sarcoma, osteosarcoma, and rhabdomyosarcoma. *Hum Pathol.* 2012 Jan 13. [PMID: 22245111] (IHC, Human)





### **Novus Biologicals USA**

8100 Southpark Way, A-8  
Littleton, CO 80120  
USA  
Phone: 303.730.1950  
Toll Free: 1.888.506.6887  
Fax: 303.730.1966  
novus@novusbio.com

### **Novus Biologicals Canada**

461 North Service Road West, Unit B37  
Oakville, ON L6M 2V5  
Canada  
Phone: 905.827.6400  
Toll Free: 855.668.8722  
Fax: 905.827.6402  
canada@novusbio.com

### **Novus Biologicals Europe**

19 Barton Lane  
Abingdon Science Park  
Abingdon, OX14 3NB, United Kingdom  
Phone: (44) (0) 1235 529449  
Free Phone: 0800 37 34 15  
Fax: (44) (0) 1235 533420  
info@bio-techne.com

### **General Contact Information**

www.novusbio.com  
Technical Support: technical@novusbio.com  
Orders: orders@novusbio.com  
General: novus@novusbio.com

### **Limitations**

This product is for research use only and is not approved for use in humans or in clinical diagnosis. Primary Antibodies are guaranteed for 1 year from date of receipt.

**For more information on our guarantee, please visit [www.novusbio.com/guarantee](http://www.novusbio.com/guarantee).**

