

Product Datasheet

Musashi-1 Antibody NB100-1759SS

Unit Size: 0.025 mg

Store at 4C short term. Aliquot and store at -20C long term. Avoid freeze-thaw cycles.

www.novusbio.com



support@novusbio.com

Publications: 3

Protocols, Publications, Related Products, Reviews, Research Tools and Images at:
www.novusbio.com/NB100-1759

Updated 6/15/2014 v.20.1

NB100-1759SS

Musashi-1 Antibody

Product Information	
Unit Size	0.025 mg
Concentration	1 mg/ml
Storage	Store at 4C short term. Aliquot and store at -20C long term. Avoid freeze-thaw cycles.
Clonality	Polyclonal
Preservative	0.02% Sodium Azide
Purity	Immunogen affinity purified
Buffer	PBS

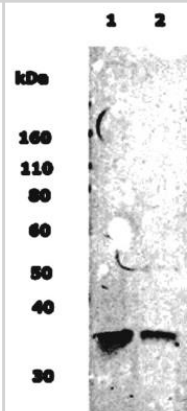
Product Description	
Host	Rabbit
Gene ID	4440
Gene Symbol	MSI1
Species	Human, Mouse, Rat
Species Reactivity	Reacts with human, rat, and mouse Musashi 1 protein.
Marker	Neuronal Stem Cell Marker
Specificity/Sensitivity	Musashi 1 - Neuronal Stem Cell Marker
Immunogen	Reacts with residues 5-21 [APQPGLASPDSPHPDCK] of the human, mouse and rat Musashi 1 protein.

Product Application Details	
Applications	Western Blot, Immunocytochemistry/Immunofluorescence, Immunohistochemistry, Immunohistochemistry-Paraffin
Recommended Dilutions	Immunocytochemistry/Immunofluorescence, Immunohistochemistry 1:10-1:500, Immunohistochemistry-Paraffin 1:10-1:500, Western Blot 1:500
Application Notes	Use in Immunocytochemistry/immunofluorescence reported in scientific literature (PMID 24006477)

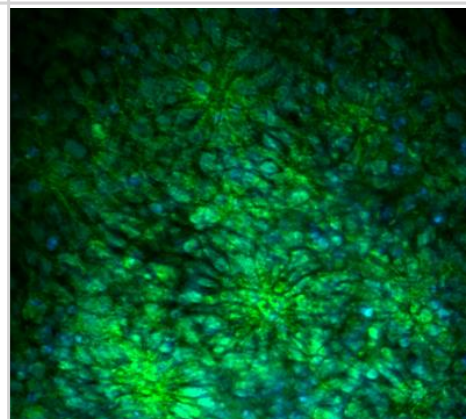


Images

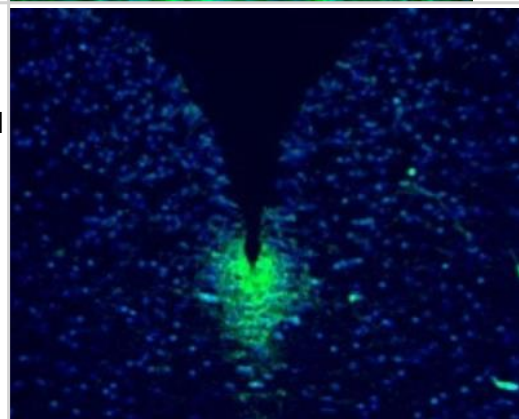
Western Blot: Musashi 1 Antibody [NB100-1759] - WB detection of Musashi-1 protein in 10 ug of rat neural stem cell lysate (lane 1) and normal human brain lysate (lane 2) with Musashi-1 antibody NB100-1759 at a dilution of 1:500.



Immunocytochemistry/Immunofluorescence: Musashi 1 Antibody [NB100-1759] - Image of staining with Musashi polyclonal antibody (1:100 dilution) shows Musashi (green) staining on neural rosettes (human). Nuclei are counterstained blue (DAPI). Cells were fixed with 4 percent PFA. No antigen retrieval was done.



Immunocytochemistry/Immunofluorescence: Musashi 1 Antibody [NB100-1759] - Musashi-positive cells stained with Musashi antibody (1:150 dilution) in the ventricular zone of E14.5 mouse medulla. Image taken at 200x magnification. The sections were 4% PFA fixed, paraffin-embedded and cut at 5 microns.



Publications

Nizzardo M, Simone C, Rizzo F et al. Minimally invasive transplantation of iPSC-derived ALDHhiSSC^{lo}VLA4⁺ neural stem cells effectively improves the phenotype of an amyotrophic lateral sclerosis model. *Hum. Mol. Genet.* 2014 Jan 15 [PMID: 24006477] (ICC/IF, Human)

Kanwar SS, Yu Y, Nautiyal J et al. The Wnt/beta-catenin pathway regulates growth and maintenance of colonospheres. *Mol Cancer.* 2010 Aug 6 [PMID: 20691072]

Fishbein TM, Novitskiy G, Lough DM et al. Rejection reversibly alters enteroendocrine cell renewal in the transplanted small intestine. *Am J Transplant* 2009 Jul [PMID: 19519821] (IHC, Human)



Novus Biologicals USA

8100 Southpark Way, A-8
Littleton, CO 80120
USA
Phone: 303.730.1950
Toll Free: 1.888.506.6887
Fax: 303.730.1966
novus@novusbio.com

Novus Biologicals Canada

461 North Service Road West, Unit B37
Oakville, ON L6M 2V5
Canada
Phone: 905.827.6400
Toll Free: 855.668.8722
Fax: 905.827.6402
canada@novusbio.com

Novus Biologicals Europe

19 Barton Lane
Abingdon Science Park
Abingdon, OX14 3NB, United Kingdom
Phone: (44) (0) 1235 529449
Free Phone: 0800 37 34 15
Fax: (44) (0) 1235 533420
info@bio-techne.com

General Contact Information

www.novusbio.com
Technical Support: technical@novusbio.com
Orders: orders@novusbio.com
General: novus@novusbio.com

Limitations

This product is for research use only and is not approved for use in humans or in clinical diagnosis. Primary Antibodies are guaranteed for 1 year from date of receipt.

For more information on our guarantee, please visit www.novusbio.com/guarantee.

