

Product Datasheet

BMAL1 Antibody **NB100-129SS**

Unit Size: 0.1 ml

Store at 4C. Do not freeze.

www.novusbio.com



support@novusbio.com

Protocols, Publications, Related Products, Reviews, Research Tools and Images at:
www.novusbio.com/NB100-129

Updated 6/15/2014 v.20.1

NB100-129SS

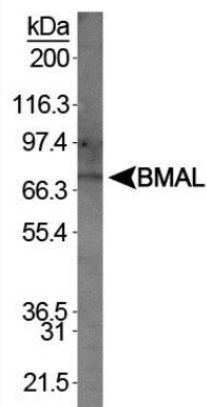
BMAL1 Antibody

Product Information	
Unit Size	0.1 ml
Concentration	This product is unpurified. The exact concentration of antibody is not quantifiable.
Storage	Store at 4C. Do not freeze.
Clonality	Polyclonal
Preservative	0.02% Sodium Azide
Purity	Whole antisera
Target Molecular Weight	73 kDa
Product Description	
Host	Rabbit
Gene ID	406
Gene Symbol	ARNTL
Species	Human
Species Reactivity	Human.
Immunogen	Recombinant protein corresponding to residues 294-624 of human BMAL1. [UniProt# O00327]
Product Application Details	
Applications	Western Blot, Simple Western, Chromatin Immunoprecipitation
Recommended Dilutions	Chromatin Immunoprecipitation 1:10-1:500, Western Blot 1:100-1:200, Simple Western 1:100
Application Notes	This BMAL1 antibody is useful for Chromatin Immunoprecipitation and Western blot, where it recognizes a band at ~73 kDa representing BMAL1. Results were negative for ICC/IF in Hela and MCF7 cells. In Simple Western only 10-15 uL of the recommended dilution is used per data point.

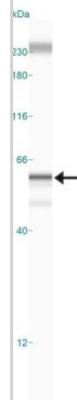


Images

Western Blot: BMAL1 Antibody [NB100-129] - Detection of BMAL in 3T3/L1 lysates.



Simple Western: BMAL1 Antibody [NB100-129] - Simple Western lane view shows a specific band for BMAL1 in 0.5 mg/ml of NIH-3T3 lysate. This experiment was performed under reducing conditions using the 12-230 kDa separation system.



Procedures

Western Blot Protocol for BMAL1 Antibody (NB100-129)

Procedure Guide for NB 100-129
(Anti-MOP3 aka Anti-BMAL1)

Western Blot Procedure

1. Proteins are separated by electrophoresis.
2. Proteins are transferred to nitrocellulose sheets.
3. Following the protein transfer, the filters are blocked for 1 hour at room temperature, gently shaking.
4. The filters are then incubated with a 1:100 dilution of (NB100-129) anti-MOP3 (aka: Banti-BMAL1) in PBS + 5% Dry Milk for 2 hours at room temperature, gently shaking. *
5. The filters are washed three times with TBST at room temperature.
6. The filters are then incubated with an Alkaline Phosphatase conjugated secondary antibody [Goat anti-Rabbit Alk Phos conjugated Ab from Jackson ImmunoResearch #111-055-003], diluted 1:5000 in PBS + 5% Dry Milk, for 1 hour at room temperature.
7. The filters are washed three times with TBST at room temperature.
8. Stained the filters with NBT/BCIP substrate at room temperature.
9. The filters are finally washed three times with TBST at room temperature.

* Overnight at 4 degrees C will increase sensitivity





Novus Biologicals USA

8100 Southpark Way, A-8
Littleton, CO 80120
USA
Phone: 303.730.1950
Toll Free: 1.888.506.6887
Fax: 303.730.1966
novus@novusbio.com

Novus Biologicals Canada

461 North Service Road West, Unit B37
Oakville, ON L6M 2V5
Canada
Phone: 905.827.6400
Toll Free: 855.668.8722
Fax: 905.827.6402
canada@novusbio.com

Novus Biologicals Europe

19 Barton Lane
Abingdon Science Park
Abingdon, OX14 3NB, United Kingdom
Phone: (44) (0) 1235 529449
Free Phone: 0800 37 34 15
Fax: (44) (0) 1235 533420
info@bio-techne.com

General Contact Information

www.novusbio.com
Technical Support: technical@novusbio.com
Orders: orders@novusbio.com
General: novus@novusbio.com

Limitations

This product is for research use only and is not approved for use in humans or in clinical diagnosis. Primary Antibodies are guaranteed for 1 year from date of receipt.

For more information on our guarantee, please visit www.novusbio.com/guarantee.

