

**Magnetic Separator M12+12**  
**Magnetic Separator M96**

**Order# PR-MAGMS01**

**Order# PR-MAGMS02/PR-MAGMS03**



**Mo Bi Tec**  
MOLECULAR BIOTECHNOLOGY



## Contents

<b>Intended Use .....</b>	<b>3</b>
<b>Product Description .....</b>	<b>3</b>
<b>Magnetic Separator M12 + 12 (Art.No.: PR-MAGMS01).....</b>	<b>3</b>
<b>Magnetic Separator M96 (Art.No.: PR-MAGMS02).....</b>	<b>4</b>
<b>Magnetic Separator for PCR Strips (Art.No.: PR-MAGMS03 (use with PR-MAGMS02)) .....</b>	<b>5</b>
<b>Order Information, Shipping and Storage.....</b>	<b>6</b>
<b>Contact and Support .....</b>	<b>6</b>



**Strong magnetic field. Before working with the magnets, take appropriate safety measures. Keep the magnets away from ferrous materials, and magnetic media like computers, videotapes, credit cards etc.**

## Intended Use

MoBiTec's Magnetic Separators are intended for magnetic separation of M-Beads from liquid samples for isolation and purification of nucleic acids and proteins, immunoprecipitation, immunoassays (ELISA), cell sorting, and purification of biomolecules. Magnetic Separators are designed for optimal magnetic bead separation in terms of speed and bead pellet positioning, as well as stability and user-friendliness.

## Product Descriptions

Magnetic Separator M12 + 12, Magnetic Separator M96, Magnetic Separator PCR strip adapter are magnetic separators for manual use with 1.5 - 2 ml centrifuge tubes, 96-well microplates, PCR microplates, or PCR tube strips. The neodymium (NdFeB, NIB, or Neo) magnets used for the separators are the strongest permanent magnets made. These magnetic separators consists of a durable plexiglass block which is chemically inert and enables perfect visual control of the magnetic bead separation.

### Magnetic Separator M12 + 12 (Art.No.: PR-MAGMS01)

The Magnetic Separator M12 + 12 is designed for manual use with various 1.5 and 2 ml microtubes.

Magnetic Separator M12 + 12 enables easy separation of beads from liquids for processing low amounts of samples with working volumes from 10 µl to 2 ml. In the centre of a stable block, 12 magnets allow accommodation of up to 24 centrifuge tubes.

The separator is designed to hold 2 ml microtubes in a stable upright position, and 1.5 ml tubes in a slightly tilted position for fast separation and easy handling in small-to-medium volumes. After liquids are pipetted off, microcentrifuge tubes can be conveniently placed on the outer positions for resuspending beads and further processing. M-Beads typically collect from a solution to the side of a centrifuge tube between 10 seconds and 3 minutes (depending on the type of beads and application). Separation of M-Beads Magnetic silica beads DNA is completed within 10 seconds.

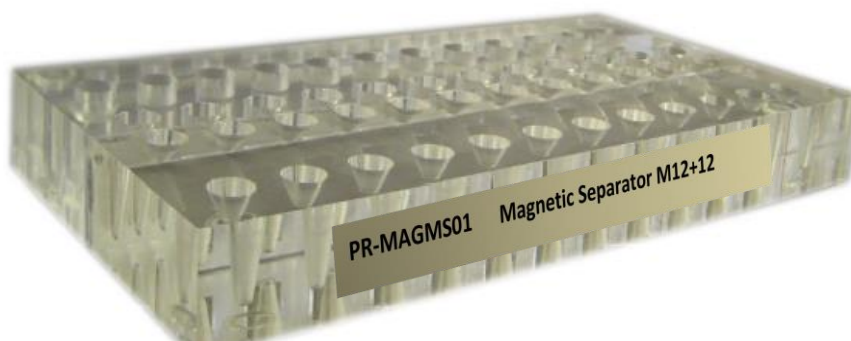


Fig. 1: Magnetic Separator M12 + 12. Dimensions: 21.7 cm x 11 cm x 2.5 cm. Weight: ±0.7 kg



## Magnetic Separator M96 (Art.No.: PR-MAGMS02)

This product is designed for manual use with 96 well microplates and PCR plates.

Magnetic Separator M96 enables easy separation of beads from liquids for multiple sample processing between with 8- or 12-channel pipettes. In a stable plexiglass block, 24 magnets are placed for magnetic separation of beads in 96 wells.

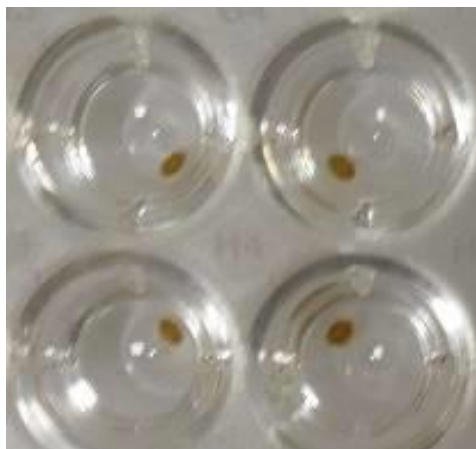


Fig. 2: M-Beads collected with Magnetic Separator M96 in 4 wells of a 96-well U-bottom microplate.

Magnetic Separator M96 allows magnetic particles to be pulled to the side of wells for optimal access to the bottom of the wells and easy supernatant removal. The product is suitable for U- and V-bottom shaped 96 well microplates and for most PCR plates, skirted or semi- and non-skirted.

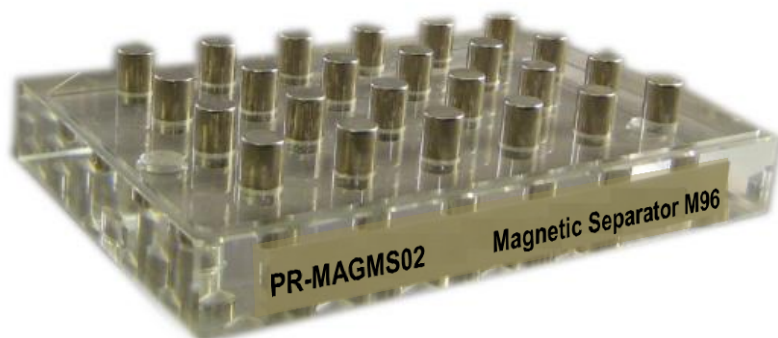


Fig. 3: Magnetic Separator M96. Dimensions: 12.8 cm x 8.6 cm x 2.5 cm. Weight:  $\pm 0.4$  kg



## Magnetic Separator for PCR Strips (Art.No.: PR-MAGMS03 (use with PR-MAGMS02))

This product is designed for manual use with 8- and 12-tube PCR strips and is complementary to Magnetic Separator M96. The adapter can be placed on the Magnetic Separator M96 and is suitable for users with smaller sample throughputs, preferring use of PCR tube strips over PCR plates. Together, the Magnetic Separator M96 and the Magnetic Separator PCR strip adapter enable use of a broad range of consumables with a fast and easy solution. These separators are suitable for use with U- or V-shaped 96 well microplates and for 96-well PCR plates in various formats, and 8- and 12-tube PCR strips. M-Beads typically collect from a solution within 1 - 2 minutes, after which liquids are pipetting off easily with a single, 8- or 12-channel multi-pipette.



Fig. 4: Magnetic Separator PCR strip adapter. Dimensions: 12.8 cm x 8.6 cm x 1.0 cm. Weight:  $\pm 0.1$  kg

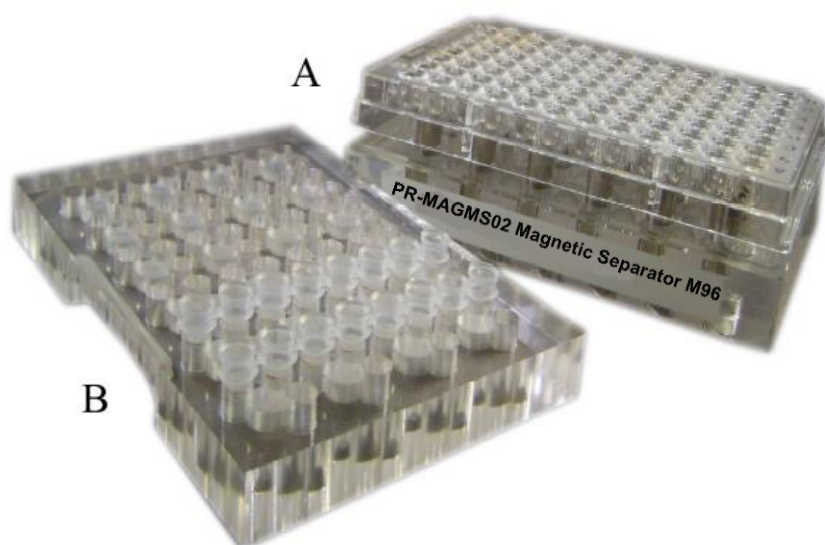


Fig. 5: (A) Magnetic Separator M96 with full-skirt 96 well PCR plate (B). Magnetic Separator PCR strip adapter with 8-tube PCR strips



## Order Information, Shipping and Storage

Order#	Product	Quantity
PR-MAGMS01	Magnetic Separator M12+12 for the isolation of M-Beads Magnetic silica beads in 12 x 1.5 ml and 12 x 2 ml tubes	1 each
PR-MAGMS02	Magnetic Separator M96 for the isolation of M-Beads Magnetic silica beads in microtiter plate format (96 wells)	1 each
PR-MAGMS03	Magnetic Separator for PCR Strips	1 each
shipped at RT; store at RT		

### Storage and stability

MM-separators should be cleaned with mild detergents. Contact with harsh chemicals or organic solvents may damage the surface. Store at room temperature in dry environment. Do not heat the magnets above 80 °C, as this will result in loss of magnetic properties!

## Contact and Support

MoBiTec GmbH ♦ Lotzestrasse 22a ♦ D-37083 Goettingen ♦ Germany

**Customer Service** – General inquiries & orders  
phone: +49 (0)551 707 22 0  
fax: +49 (0)551 707 22 22  
e-mail: [order@mobitec.com](mailto:order@mobitec.com)

**Technical Service** – Product information  
phone: +49 (0)551 707 22 70  
fax: +49 (0)551 707 22 77  
e-mail: [info@mobitec.com](mailto:info@mobitec.com)

**MoBiTec in your area:** Find your local distributor at [www.mobitec.com](http://www.mobitec.com)