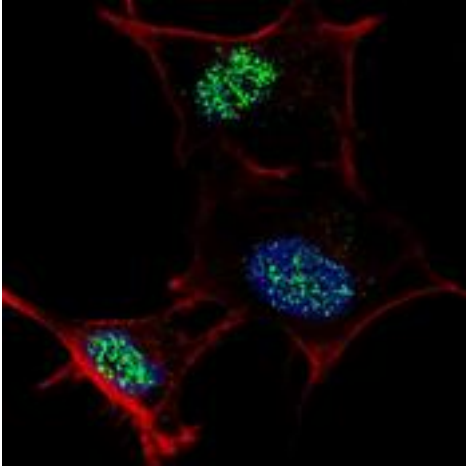


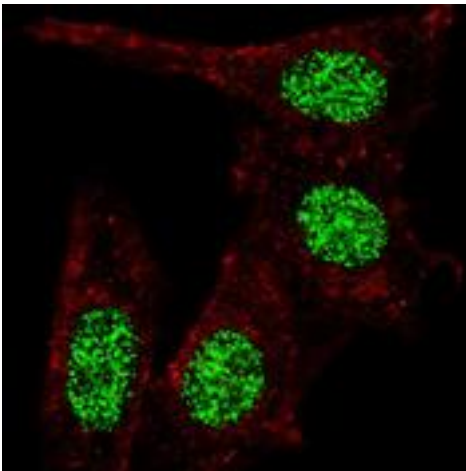
KLF4 Rabbit anti-Human Polyclonal (Ser457) Antibody - LS-C98591 - LSBio	
CatalogID:	LS-C98591
Target:	Kruppel-like factor 4 (gut) (KLF4)
Synonyms:	KLF4 Antibody, EZF Antibody, GKLf Antibody, Kruppel-like factor 4 (gut) Antibody, Hezf Antibody, Krueppel-like factor 4 Antibody
Host	KLF4 antibody was produced in Rabbit
Clonality:	Polyclonal
Immunogen Species:	KLF4 antibody was raised against Human
Antigen Type:	Synthetic peptide
Immunogen:	KLF4 antibody was raised against kLH conjugated synthetic peptide corresponding to amino acid residues surrounding S457 of human KLF4.
Epitope:	Ser457
Reactivity:	Human
Purification:	Immunoaffinity purified
Presentation:	PBS, 0.09% sodium azide
Recommended Storage:	Maintain refrigerated at 2-8°C for up to 6 months. For long term storage store at -20°C.
Uses:	Immunofluorescence (1:10 - 1:50), Western blot (1:1000) (Optimal dilution to be determined by the researcher)
Size:	400 µl

Immunofluorescence Image:



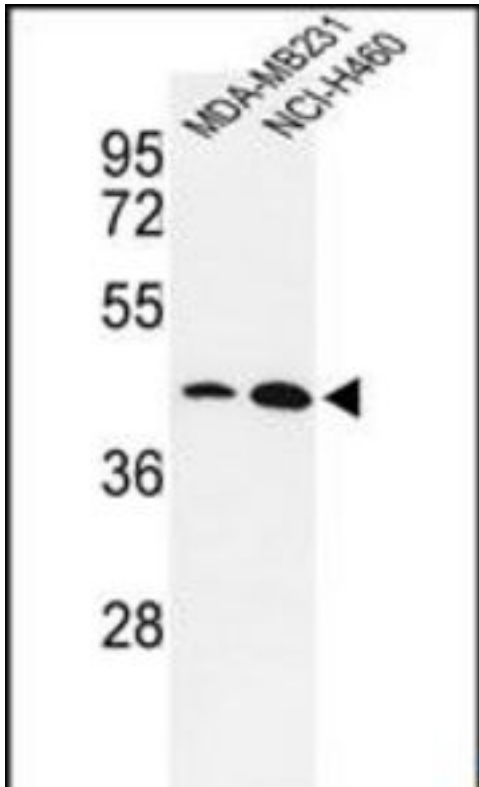
Fluorescent confocal image of SY5Y cells stained with KLF4 (S457) antibody. SY5Y cells were fixed with 4% PFA (20 min), permeabilized with Triton X-100 (0.2%, 30 min), then incubated with KLF4 (S457) primary antibody (1:100, 2 h at room temperature). For secondary antibody, Alexa Fluor 488 conjugated donkey anti-rabbit antibody (green) was used (1:1000, 1h). Cytoplasmic actin was counterstained with Alexa Fluor 555 (red) conjugated Phalloidin (5.25 μ M, 25 min). Note the highly specific localization of the phosphorylated KLF4 immunoreactivity to the nuclei.

Immunofluorescence Image:



Fluorescent confocal image of HeLa cells stained with KLF4 (S457) antibody. HeLa cells were fixed with 4% PFA (20 min), permeabilized with Triton X-100 (0.2%, 30 min), then incubated with KLF4 (S457) primary antibody (1:100, 2 h at room temperature). For secondary antibody, Alexa Fluor 488 conjugated donkey anti-rabbit antibody (green) was used (1:1000, 1h). Cytoplasmic actin was counterstained with Alexa Fluor 555 (red) conjugated Phalloidin (5.25 μ M, 25 min). Note the highly specific localization of the phosphorylated KLF4 immunoreactivity to the nuclei but not the cytoplasm.

Western Blot Image:



Western blot of KLF4-S457 LS-C98591 in MDA-MB231, NCI-H460 cell line lysates (35 ug/lane). KLF4 (arrow) was detected using the purified Pab.

Requested From:

Japan

Laboratory Reagent For In Vitro Research Use Only

Not for resale without prior written consent from LifeSpan BioSciences, Inc.

Created on 10/3/2014

© 2014 LifeSpan BioSciences