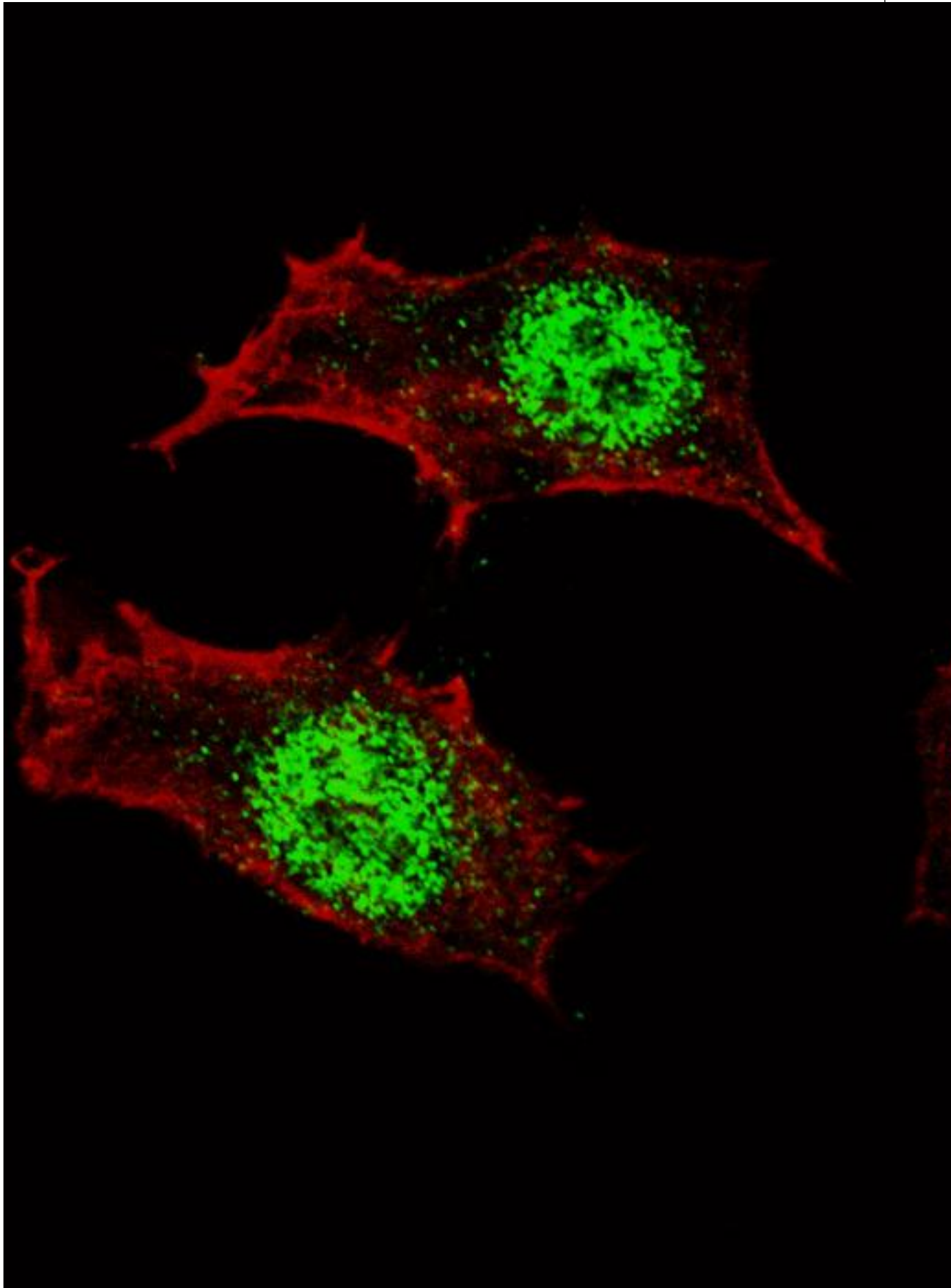


**KLF4 Rabbit anti-Human Polyclonal Antibody - LS-C98590 - LSBio**

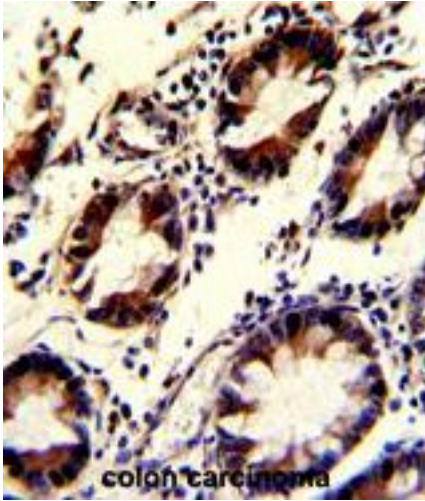
<b>CatalogID:</b>	LS-C98590
<b>Target:</b>	Kruppel-like factor 4 (gut) (KLF4)
<b>Synonyms:</b>	KLF4 Antibody, EZF Antibody, GKLF Antibody, Kruppel-like factor 4 (gut) Antibody, Hezf Antibody, Krueppel-like factor 4 Antibody
<b>Host</b>	KLF4 antibody was produced in Rabbit
<b>Clonality:</b>	Polyclonal
<b>Immunogen Species:</b>	KLF4 antibody was raised against Human
<b>Antigen Type:</b>	Recombinant protein
<b>Immunogen:</b>	KLF4 antibody was raised against his tag recombinant protein of human KLF4.
<b>Reactivity:</b>	Human
<b>Purification:</b>	Ammonium sulfate precipitation
<b>Presentation:</b>	PBS, 0.09% sodium azide
<b>Recommended Storage:</b>	Maintain refrigerated at 2-8°C for up to 6 months. For long term storage store at -20°C.
<b>Uses:</b>	IHC - Paraffin (1:50 - 1:100), Immunofluorescence (1:10 - 1:50), Western blot (1:1000) (Optimal dilution to be determined by the researcher)
<b>Size:</b>	400 µl

**Immunohistochemistry Image:**



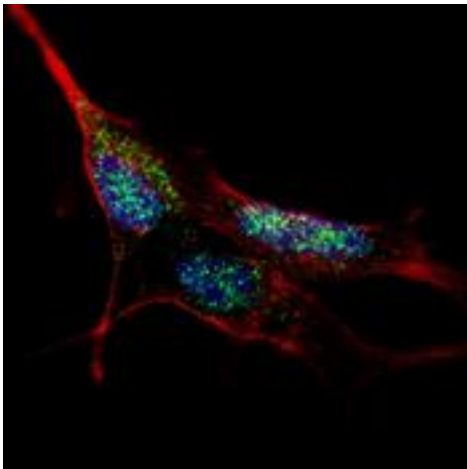
Formalin-fixed and paraffin-embedded human colon carcinoma with KLF4 Antibody, which was peroxidase-conjugated to the secondary antibody, followed by DAB staining.

**Immunohistochemistry Image:**



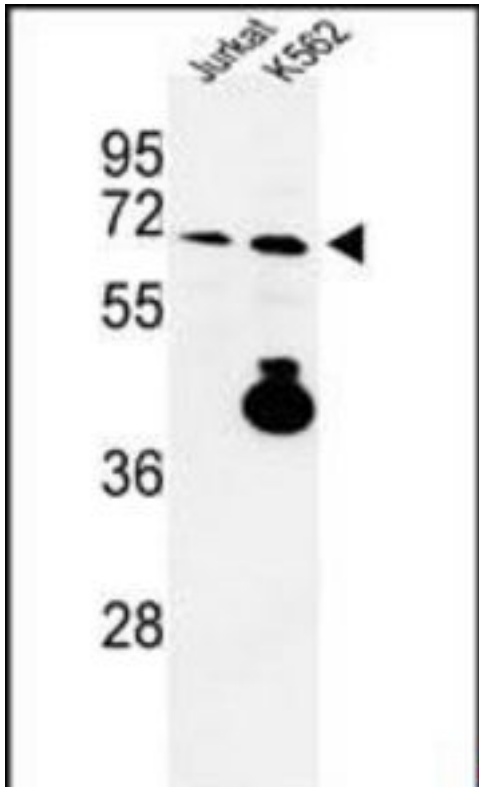
Formalin-fixed and paraffin-embedded human colon carcinoma with KLF4 Antibody, which was peroxidase-conjugated to the secondary antibody, followed by DAB staining. This data demonstrates the use of this antibody for immunohistochemistry; clinical relevance has not been evaluated.

**Immunofluorescence Image:**



Fluorescent confocal image of SY5Y cells stained with KLF4 antibody. SY5Y cells were fixed with 4% PFA (20 min), permeabilized with Triton X-100 (0.2%, 30 min), then incubated with KLF4 primary antibody (1:100, 2 h at room temperature). For secondary antibody, Alexa Fluor 488 conjugated donkey anti-rabbit antibody (green) was used (1:1000, 1h). Cytoplasmic actin was counterstained with Alexa Fluor 555 (red) conjugated Phalloidin (5.25  $\mu$ M, 25 min). Nuclei were counterstained with Hoechst 33342 (blue) (10  $\mu$ g/ml, 3 min). KLF4 immunoreactivity is localized to the nuclei in SY5Y cells.

**Western Blot Image:**



Western blot of KLF4 Antibody LS-C98590 in Jurkat, K562 cell line lysates (35 ug/lane). KLF4 (arrow) was detected using the purified Pab.

**Requested From:**

Japan

Laboratory Reagent For In Vitro Research Use Only

Not for resale without prior written consent from LifeSpan BioSciences, Inc.

Created on 10/3/2014

© 2014 LifeSpan BioSciences