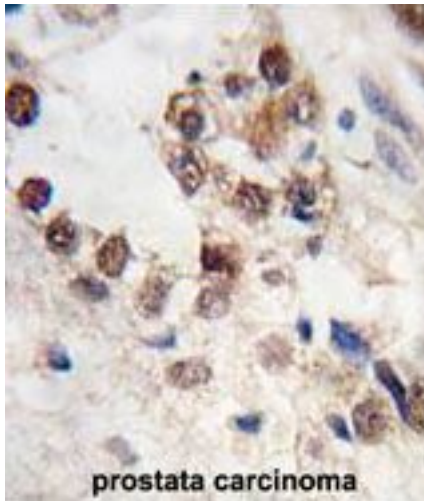


KLF4 Rabbit anti-Human Polyclonal (N-Terminus) Antibody - LS-C98588 - LSBio

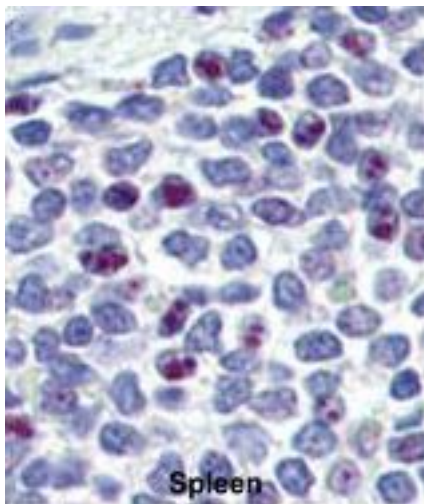
| | |
|------------------------------|---|
| CatalogID: | LS-C98588 |
| Target: | Kruppel-like factor 4 (gut) (KLF4) |
| Synonyms: | KLF4 Antibody, EZF Antibody, GKLF Antibody, Kruppel-like factor 4 (gut) Antibody, Hezf Antibody, Krueppel-like factor 4 Antibody |
| Host | KLF4 antibody was produced in Rabbit |
| Clonality: | Polyclonal |
| Immunogen Species: | KLF4 antibody was raised against Human |
| Antigen Type: | Synthetic peptide |
| Immunogen: | KLF4 antibody was raised against kLH conjugated synthetic peptide selected from the N-terminal region of human KLF4. |
| Epitope: | N-Terminus |
| Reactivity: | Human, Mouse |
| Purification: | Ammonium sulfate precipitation |
| Presentation: | PBS, 0.09% sodium azide |
| Recommended Storage: | Maintain refrigerated at 2-8°C for up to 6 months. For long term storage store at -20°C. |
| Uses: | IHC - Paraffin (1:10 - 1:50), Immunofluorescence (1:10 - 1:50), Western blot (1:1000) (Optimal dilution to be determined by the researcher) |
| Uses Not Recommended: | IHC - Paraffin |
| Size: | 400 µl |

Immunohistochemistry Image:



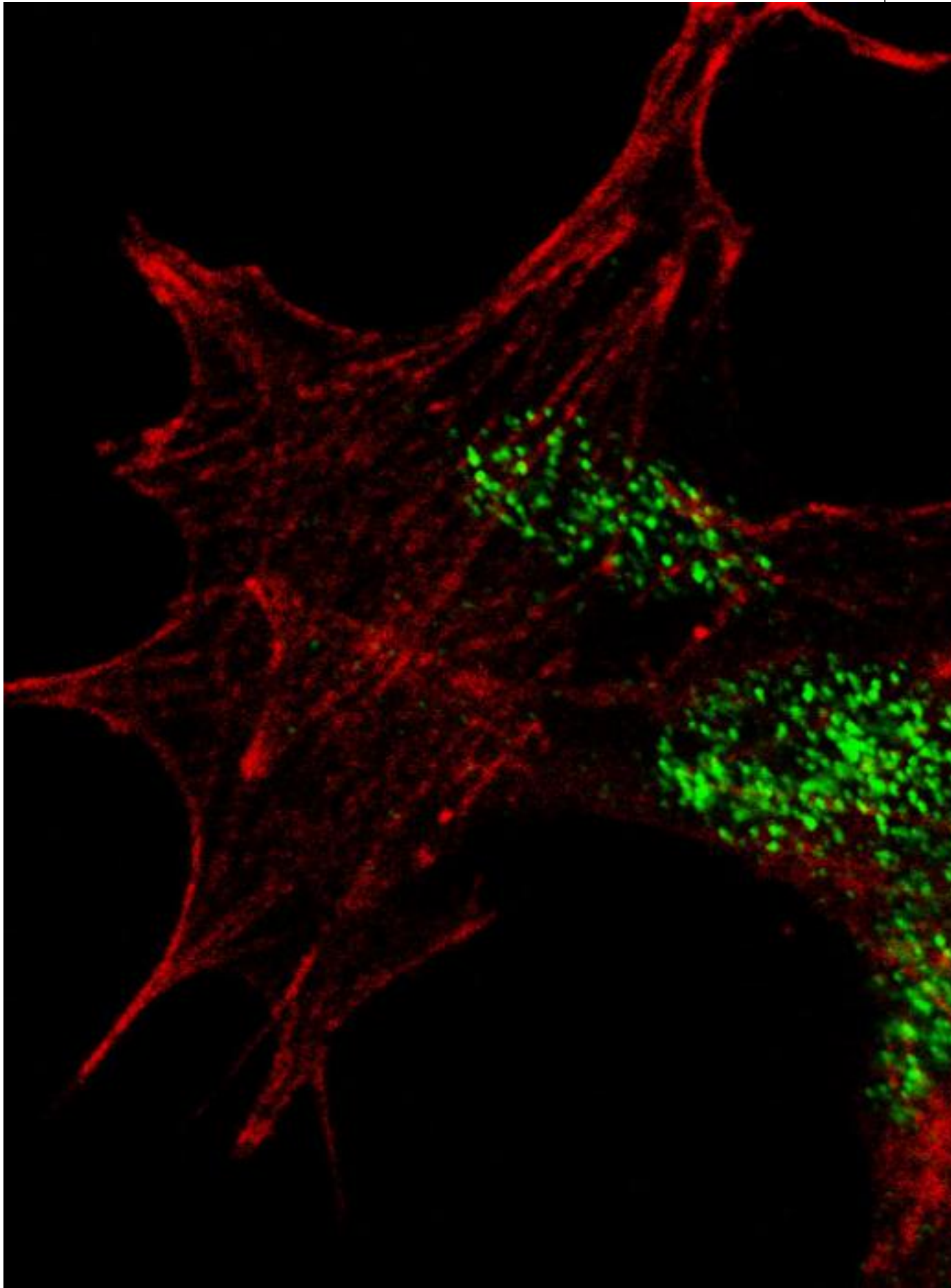
Formalin-fixed and paraffin-embedded human prostate carcinoma tissue reacted with KLF4 antibody (N-term C74) , which was peroxidase-conjugated to the secondary antibody, followed by DAB staining. This data demonstrates the use of this antibody for immunohistochemistry; clinical relevance has not been evaluated.

Immunohistochemistry Image:



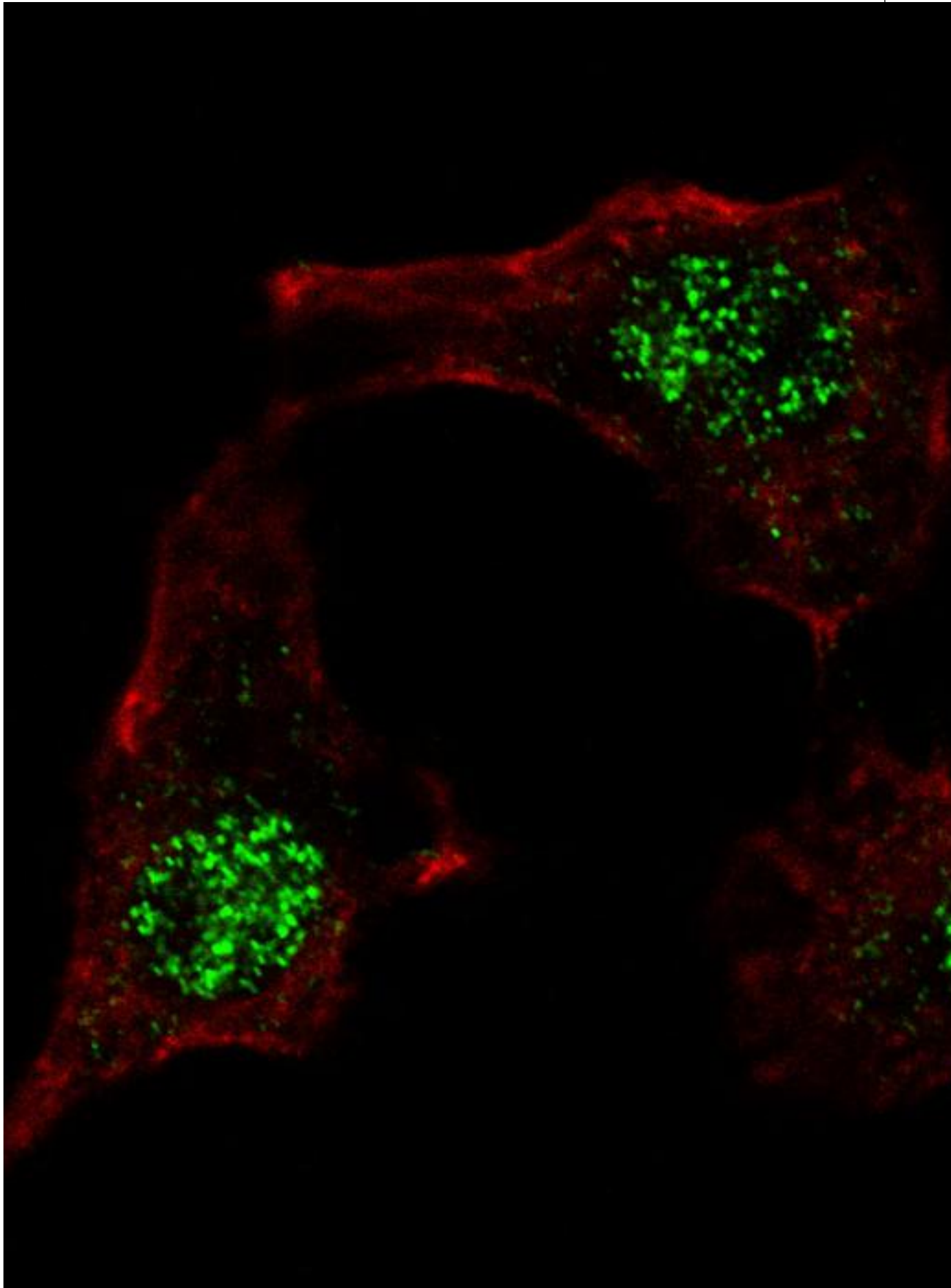
Formalin-fixed and paraffin-embedded human Spleen tissue reacted with KLF4 antibody (N-term C74) , which was peroxidase-conjugated to the secondary antibody, followed by AEC staining. This data demonstrates the use of this antibody for immunohistochemistry; clinical relevance has not been evaluated.

Immunofluorescence Image:



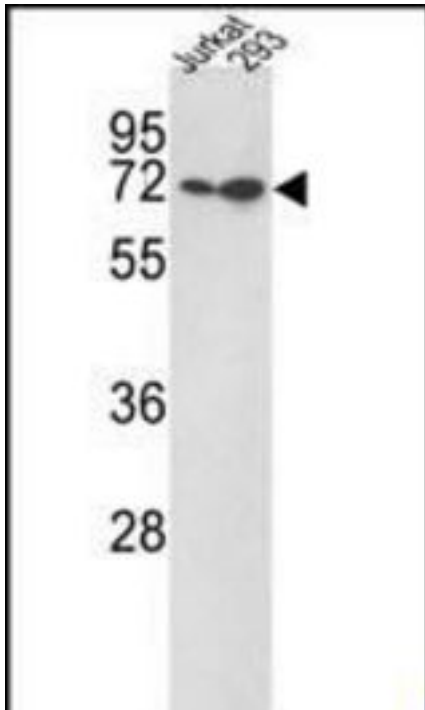
Formalin-fixed and paraffin-embedded human Spleen tissue reacted with KLF4 antibody (N-term C74) LS-C98588, which was peroxidase-conjugated to the secondary antibody, followed by AEC staining.

Immunofluorescence Image:



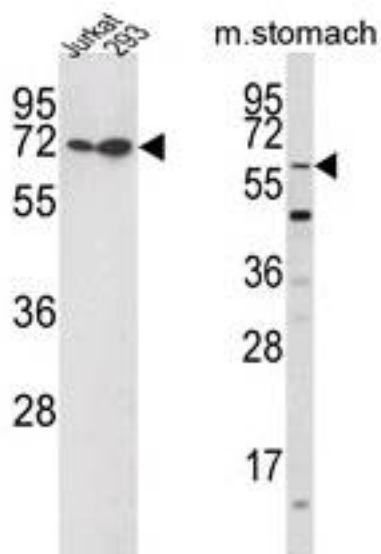
Formalin-fixed and paraffin-embedded human prostata carcinoma tissue reacted with KLF4 antibody (N-term C74) LS-C98588, which was peroxidase-conjugated to the secondary antibody, followed by DAB staining.

Western Blot Image:



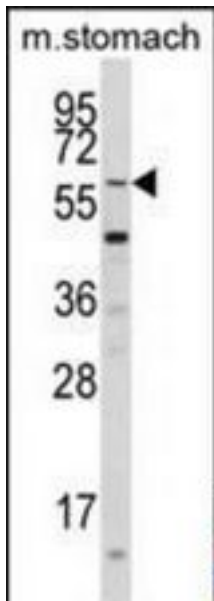
Western blot analysis of KLF4 Antibody (N-term C74) in Jurkat,293 cell line lysates (35 ug/lane).KLF4 (arrow) was detected using the purified Pab.

Western Blot Image:



(LEFT) Western blot of Jurkat and 293 cell line lysates (35 ug/lane). (RIGHT) Western blot of mouse stomach tissue lysates (35 ug/lane).

Western Blot Image:



Western blot analysis of KLF4 Antibody (N-term C74) in mouse stomach tissue lysates (35 ug/lane). KLF4 (arrow) was detected using the purified Pab.

Requested From:

Japan

Laboratory Reagent For In Vitro Research Use Only

Not for resale without prior written consent from LifeSpan BioSciences, Inc.

Created on 10/3/2014

© 2014 LifeSpan BioSciences