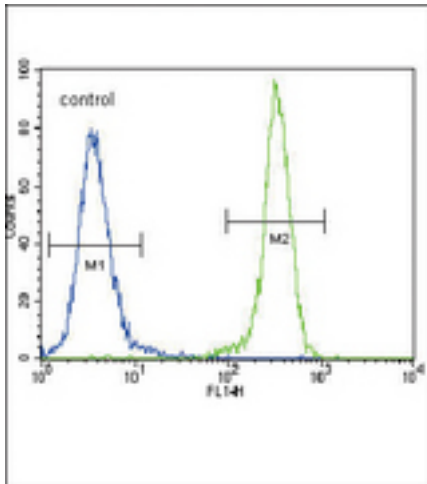


CDH1 / E Cadherin Rabbit anti-Human Polyclonal (C-Terminus) Antibody - LS-C98224 - LSBio

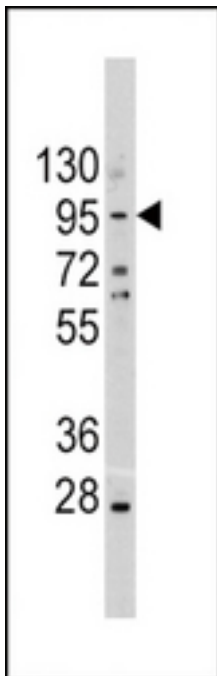
CatalogID:	LS-C98224
Target:	cadherin 1, type 1, E-cadherin (epithelial) (CDH1)
Synonyms:	CDH1 Antibody, CD324 Antibody, CDHE Antibody, Cell-CAM 120/80 Antibody, E Cadherin Antibody, E-Cadherin Antibody, ECAD Antibody, Epithelial cadherin Antibody, Arc-1 Antibody, UVO Antibody, Cadherin-1 Antibody, CAM 120/80 Antibody, CD324 antigen Antibody, LCAM Antibody, Uvomorulin Antibody
Family / Subfamily:	Cadherin / not assigned-Cadherin
Host	CDH1 antibody was produced in Rabbit
Clonality:	Polyclonal
Immunogen Species:	CDH1 / E Cadherin antibody was raised against Human
Antigen Type:	Synthetic peptide
Immunogen:	CDH1 / E Cadherin antibody was raised against kLH conjugated synthetic peptide selected from the C-terminal region of human CDH1.
Epitope:	C-Terminus
Reactivity:	Human
Purification:	Ammonium sulfate precipitation
Presentation:	PBS, 0.09% sodium azide
Recommended Storage:	Long term: -20°C; Short term: +4°C; Avoid freeze-thaw cycles.
Uses:	Western blot (1:1000), Flow Cytometry (1:10 - 1:50) (Optimal dilution to be determined by the researcher)
Uses Not Recommended:	IHC - Paraffin
Size:	400 µl

Flow Cytometry Image:



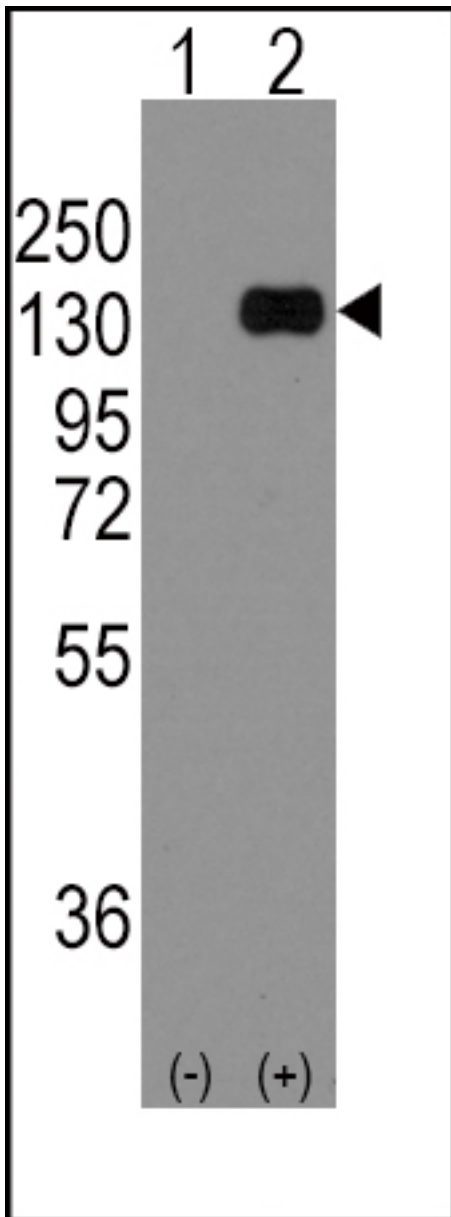
E Cadherin (CDH1) Antibody (C-term) flow cytometric analysis of 293 cells (right histogram) compared to a negative control cell (left histogram). FITC-conjugated goat-anti-rabbit secondary antibodies were used for the analysis.

Western Blot Image:



Western blot of CDH1 Antibody (C-term) LS-C98224 in A375 cell line lysates (35 ug/lane). CDH1 (arrow) was detected using the purified Pab (1:60 dilution).

Western Blot Image:



Western blot of CDH1 (arrow) using rabbit polyclonal CDH1 Antibody (C-term) LS-C98224. 293 cell lysates (2 ug/lane) either nontransfected (Lane 1) or transiently transfected with the CDH1 gene (Lane 2).

Requested From:

Japan

Laboratory Reagent For In Vitro Research Use Only

Not for resale without prior written consent from LifeSpan BioSciences, Inc.

Created on 10/3/2014

© 2014 LifeSpan BioSciences