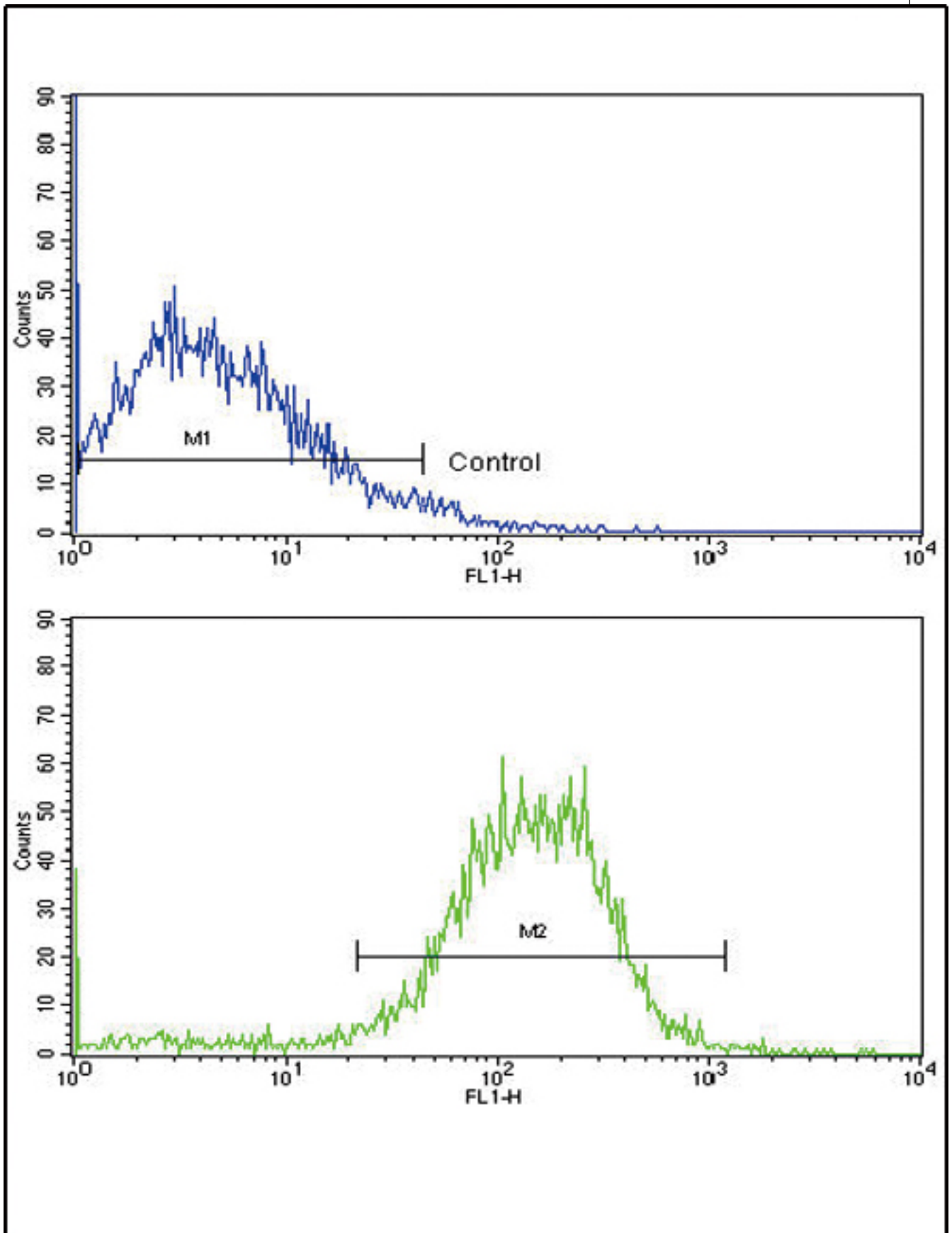


**CDH1 / E Cadherin Rabbit anti-Human Polyclonal (N-Terminus) Antibody - LS-C98223 - LSBio**

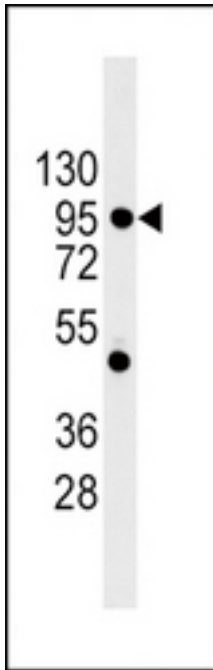
<b>CatalogID:</b>	LS-C98223
<b>Target:</b>	cadherin 1, type 1, E-cadherin (epithelial) (CDH1)
<b>Synonyms:</b>	CDH1 Antibody, CD324 Antibody, CDHE Antibody, Cell-CAM 120/80 Antibody, E Cadherin Antibody, E-Cadherin Antibody, ECAD Antibody, Epithelial cadherin Antibody, Arc-1 Antibody, UVO Antibody, Cadherin-1 Antibody, CAM 120/80 Antibody, CD324 antigen Antibody, LCAM Antibody, Uvomorulin Antibody
<b>Family / Subfamily:</b>	Cadherin / not assigned-Cadherin
<b>Host</b>	CDH1 antibody was produced in Rabbit
<b>Clonality:</b>	Polyclonal
<b>Immunogen Species:</b>	CDH1 / E Cadherin antibody was raised against Human
<b>Antigen Type:</b>	Synthetic peptide
<b>Immunogen:</b>	CDH1 / E Cadherin antibody was raised against kLH conjugated synthetic peptide selected from the N-terminal region of human CDH1.
<b>Epitope:</b>	N-Terminus
<b>Reactivity:</b>	Human, Mouse
<b>Purification:</b>	Ammonium sulfate precipitation
<b>Presentation:</b>	PBS, 0.09% sodium azide
<b>Recommended Storage:</b>	Maintain refrigerated at 2-8°C for up to 6 months. For long term storage store at -20°C.
<b>Uses:</b>	Western blot (1:1000), Flow Cytometry (1:10 - 1:50) (Optimal dilution to be determined by the researcher)
<b>Uses Not Recommended:</b>	IHC - Paraffin
<b>Size:</b>	400 µl

Flow Cytometry Image:



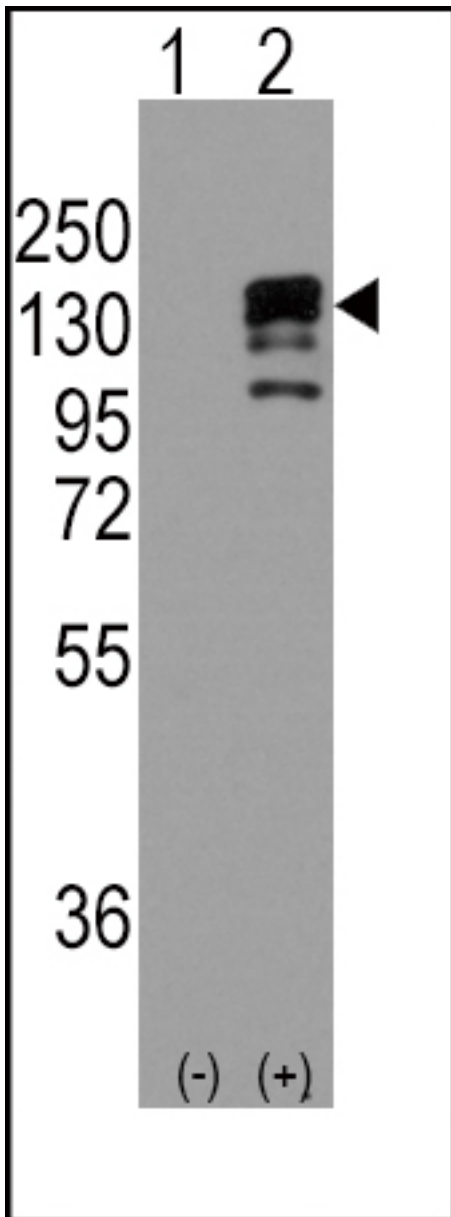
Flow cytometry of NCI-H292 cells using E Cadherin (CDH1) Antibody (N-term) (bottom histogram) compared to a negative control cell (top histogram). FITC-conjugated goat-anti-rabbit secondary antibodies were used for the analysis.

**Western Blot Image:**



Western blot of CDH1 Antibody (N-term) LS-C98223 in 293 cell line lysates (35 ug/lane). CDH1 (arrow) was detected using the purified Pab (1:60 dilution).

Western Blot Image:



Western blot of CDH1 (arrow) using rabbit polyclonal CDH1 Antibody (N-term) LS-C98223.293 cell lysates (2 ug/lane) either nontransfected (Lane 1) or transiently transfected with the CDH1 gene (Lane 2).

Requested From:

Japan

Laboratory Reagent For In Vitro Research Use Only

Not for resale without prior written consent from LifeSpan BioSciences, Inc.

Created on 10/3/2014

© 2014 LifeSpan BioSciences