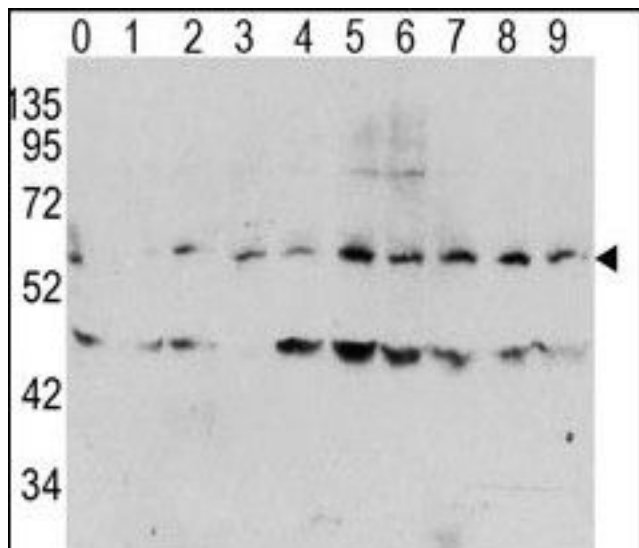


**MYC / c-Myc Rabbit anti-Human Polyclonal (pThr58) Antibody - LS-C97032 - LSBio**

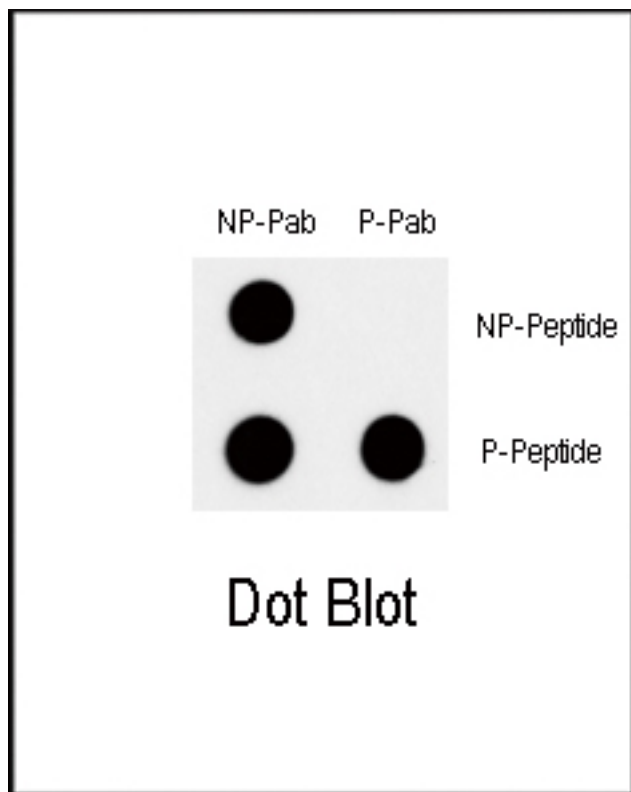
<b>CatalogID:</b>	LS-C97032
<b>Target:</b>	v-myc avian myelocytomatosis viral oncogene homolog
<b>Synonyms:</b>	MYC Antibody, BHLHe39 Antibody, C-Myc Antibody, MRTL Antibody, Myc proto-oncogene protein Antibody, Proto-oncogene c-Myc Antibody, Rats1 Antibody, Transcription factor p64 Antibody, v-myc Antibody
<b>Host</b>	MYC antibody was produced in Rabbit
<b>Clonality:</b>	Polyclonal
<b>Immunogen Species:</b>	MYC / c-Myc antibody was raised against Human
<b>Antigen Type:</b>	Synthetic phospho-peptide
<b>Immunogen:</b>	MYC / c-Myc antibody was raised against kLH conjugated synthetic phosphopeptide corresponding to amino acid residues surrounding T58 of human MYC.
<b>Epitope:</b>	pThr58
<b>Reactivity:</b>	Human
<b>Purification:</b>	Immunoaffinity purified
<b>Presentation:</b>	PBS, 0.09% sodium azide
<b>Recommended Storage:</b>	Maintain refrigerated at 2-8°C for up to 6 months. For long term storage store at -20°C.
<b>Uses:</b>	Western blot (1:1000), Dot Blot (1:500) (Optimal dilution to be determined by the researcher)
<b>Size:</b>	400 µl

**Western Blot Image:**



Western blot of Phospho-MYC-T58 Antibody in human TPA activated HeLa cell line lysates. Phospho-MYC (arrow) was detected using the purified PAb. (0: without TPA; 1:60 ug/ml TPA, 15min; 2:60 ug/ml TPA, 30min; 3:60 ug/ml TPA, 45min; 4:125 ug/ml TPA, 15min; 5:125 ug/ml TPA, 30min; 6:125 ug/ml TPA, 45min; 7:250 ug/ml TPA, 15min; 8:250 ug/ml TPA, 30min; 9:250 ug/ml, 45min)

**Dot Blot Image:**



Dot blot analysis of Phospho-MYC-T58 Pab LS-C97032 on nitrocellulose membrane. 50 ng of Phospho-peptide or Non Phospho-peptide per dot were adsorbed. Antibody working concentrations are 0.5 ug per ml.

Laboratory Reagent For In Vitro Research Use Only

Not for resale without prior written consent from LifeSpan BioSciences, Inc.

Created on 10/2/2014

© 2014 LifeSpan BioSciences