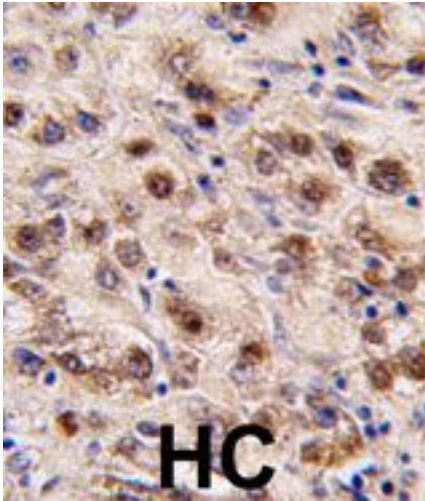


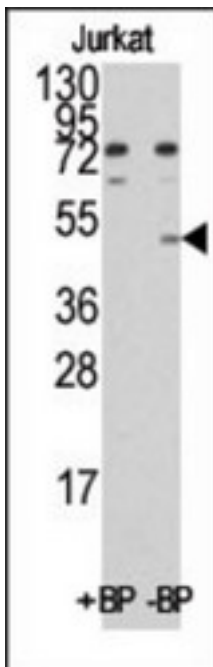
MINA / MINA53 Rabbit anti-Human Polyclonal (C-Terminus) Antibody - LS-C96544 - LSBio	
CatalogID:	LS-C96544
Target:	MYC induced nuclear antigen (MINA)
Synonyms:	MINA Antibody, MYC-induced nuclear antigen Antibody, NO52 Antibody, MINA53 Antibody, MYC induced nuclear antigen Antibody, MDIG Antibody, Nucleolar protein 52 Antibody
Host	MINA antibody was produced in Rabbit
Clonality:	Polyclonal
Immunogen Species:	MINA / MINA53 antibody was raised against Human
Antigen Type:	Synthetic peptide
Immunogen:	MINA / MINA53 antibody was raised against kLH conjugated synthetic peptide selected from the C-terminal region of human MINA.
Epitope:	C-Terminus
Reactivity:	Human
Purification:	Ammonium sulfate precipitation
Presentation:	PBS, 0.09% sodium azide
Recommended Storage:	Maintain refrigerated at 2-8°C for up to 6 months. For long term storage store at -20°C.
Uses:	IHC - Paraffin (1:10 - 1:50), Western blot (1:1000) (Optimal dilution to be determined by the researcher)
Size:	400 µl

Immunohistochemistry Image:



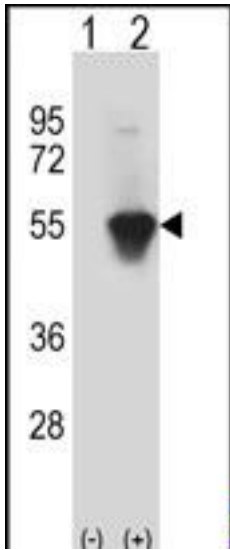
Formalin-fixed and paraffin-embedded human hepatocarcinoma tissue reacted with MINA (C-term) LS-C96544, which was peroxidase-conjugated to the secondary antibody, followed by DAB staining.

Western Blot Image:



Western blot of anti-MINA (C-term) Pab pre-incubated with and without blocking peptide in Jurkat cell line lysate. MINA(C-term) (arrow) was detected using the purified Pab.

Western Blot Image:



Western blot of MINA (arrow) using rabbit polyclonal MINA Antibody (C-term) LS-C96544. 293 cell lysates (2 ug/lane) either nontransfected (Lane 1) or transiently transfected (Lane 2) with the MINA gene.

Requested From:

Japan

Laboratory Reagent For In Vitro Research Use Only

Not for resale without prior written consent from LifeSpan BioSciences, Inc.

Created on 10/2/2014

© 2014 LifeSpan BioSciences