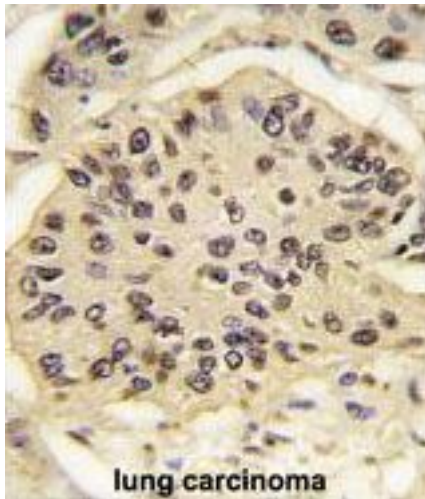


SOX2 Mouse anti-Human Monoclonal (57CT23.3.4) Antibody - LS-C96467 - LSBio

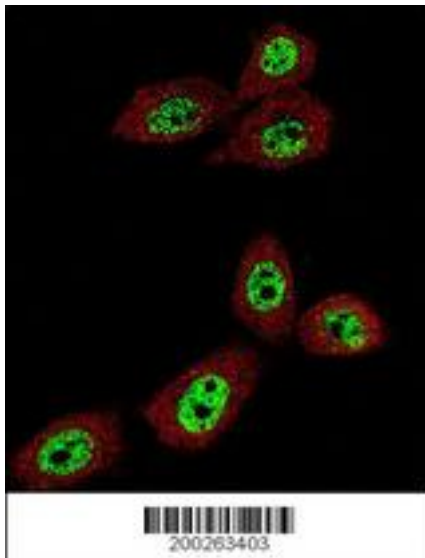
CatalogID:	LS-C96467
Target:	SRY (sex determining region Y)-box 2 (SOX2)
Synonyms:	SOX2 Antibody, MCOPS3 Antibody, Transcription factor SOX2 Antibody, ANOP3 Antibody, Transcription factor SOX-2 Antibody, SRY-related HMG-box gene 2 Antibody
Family / Subfamily:	Transcription factor
Host	SOX2 antibody was produced in Mouse
Clonality:	Monoclonal
Isotype:	IgG1
Clone Name:	57CT23.3.4
Immunogen Species:	SOX2 antibody was raised against Human
Antigen Type:	Recombinant protein
Immunogen:	SOX2 antibody was raised against sOX2 recombinant protein.
Reactivity:	Human
Purification:	Protein G purified
Presentation:	Liquid
Recommended Storage:	Maintain refrigerated at 2-8°C for up to 6 months. For long term storage store at -20°C.
Uses:	IHC - Paraffin (1:50 - 1:100), Immunofluorescence (1:100), Western blot (1:200 - 1:2000), Flow Cytometry (1:10 - 1:50) (Optimal dilution to be determined by the researcher)
Uses Not Recommended:	IHC - Paraffin
Size:	400 µl

Immunofluorescence Image:



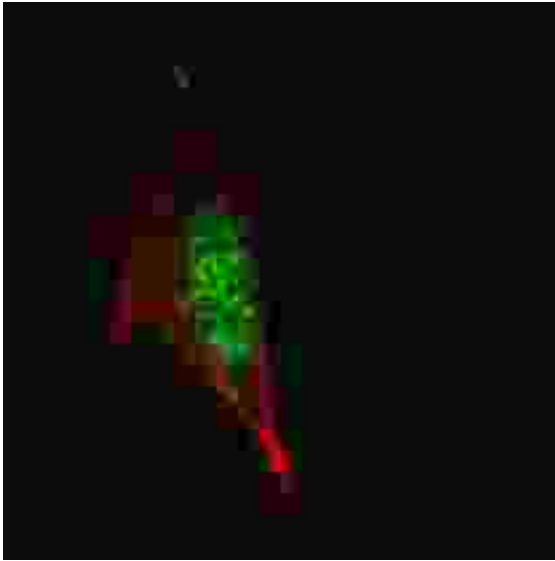
Immunofluorescence of SOX2 Antibody with paraffin-embedded human lung carcinoma tissue. 0.025 mg/ml primary antibody was followed by PE-conjugated goat anti-mouse IgG (whole molecule). PE emits orange fluorescence.

Immunofluorescence Image:



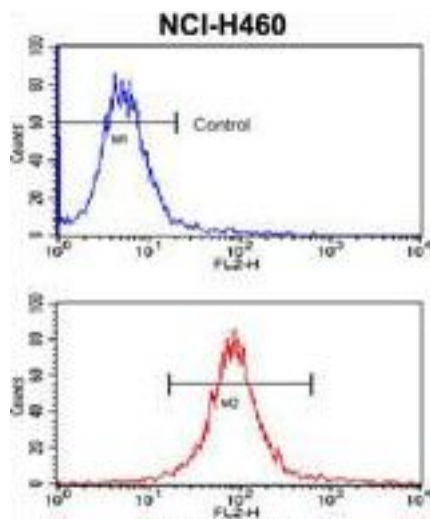
Confocal immunofluorescence of SOX2 antibody LS-C96467 with U-251 MG cell followed by Alexa Fluor 488-conjugated goat anti-mouse IgG (green). Actin filaments have been labeled with Alexa Fluor 555 phalloidin (red).

Immunofluorescence Image:



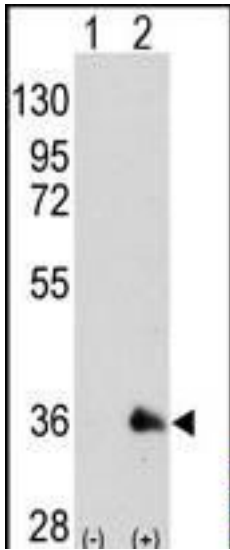
Confocal immunofluorescence of SOX2 antibody LS-C96467 with MCF-7 cell followed by Alexa Fluor 488-conjugated goat anti-mouse IgG (green). Actin filaments have been labeled with Alexa Fluor 555 phalloidin (red). DAPI was used to stain the cell nuclear (blue).

Flow Cytometry Image:



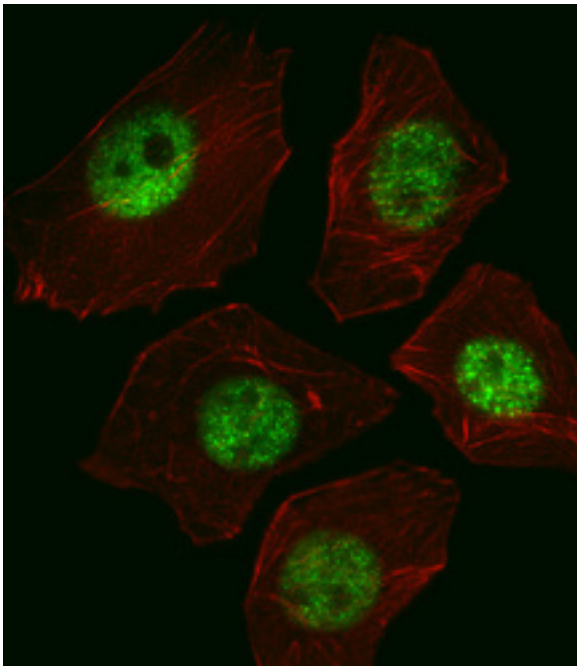
Flow cytometry of NCI-H460 cells using SOX2 Monoclonal Antibody (bottom histogram) compared to a negative control cell (top histogram). PE-conjugated goat-anti-mouse secondary antibodies were used for the analysis.

Western Blot Image:



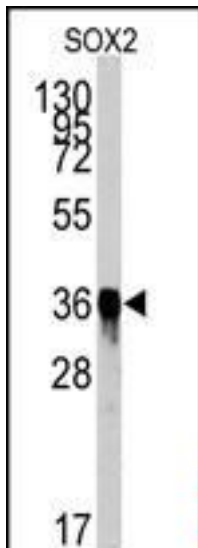
Formalin-fixed and paraffin-embedded human lung carcinoma tissue reacted with SOX2 Antibody LS-C96467, which was peroxidase-conjugated to the secondary antibody, followed by DAB staining.

Western Blot Image:



Western blot of SOX2 Antibody LS-C96467 by SOX2 recombinant protein. SOX2(arrow) was detected using the purified Mab.

Western Blot Image:



Western blot of SOX2 (arrow) using mouse monoclonal SOX2 antibody LS-C96467. 293 cell lysates (2 ug/lane) either nontransfected (Lane 1) or transiently transfected with the SOX2 gene (Lane 2)

Requested From:

Japan

Laboratory Reagent For In Vitro Research Use Only

Not for resale without prior written consent from LifeSpan BioSciences, Inc.

Created on 10/2/2014

© 2014 LifeSpan BioSciences