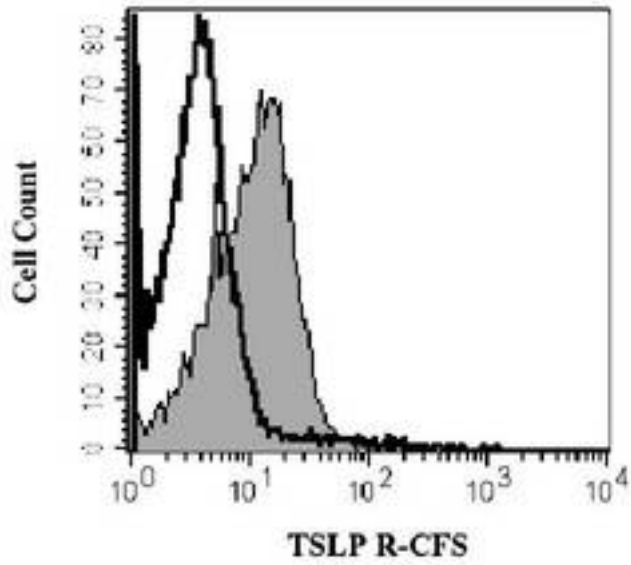


CRLF2 / TSLPR Goat anti-Goat Polyclonal (CF) Antibody - LS-C76383 - LSBio	
<b>CatalogID:</b>	LS-C76383
<b>Target:</b>	cytokine receptor-like factor 2 (CRLF2)
<b>Synonyms:</b>	CRLF2 Antibody, IL-XR Antibody, ILXR Antibody, p2RY8/CRLF2 fusion Antibody, TSLP receptor Antibody, TSLPR Antibody, CRL2 Antibody, CRLF2Y Antibody, Cytokine receptor-like 2 Antibody
<b>Host</b>	CRLF2 antibody was produced in Goat
<b>Clonality:</b>	Polyclonal
<b>Isotype:</b>	IgG
<b>Conjugations:</b>	Carboxyfluorescein (CF)
<b>Immunogen Species:</b>	CRLF2 / TSLPR antibody was raised against Goat
<b>Immunogen:</b>	CRLF2 / TSLPR antibody was raised against recombinant mouse TSLP R extracellular domain
<b>Specificity:</b>	Recognizes mouse TSLP receptor.
<b>Reactivity:</b>	Goat, Mouse
<b>Purification:</b>	Purified
<b>Presentation:</b>	PBS, 0.1% sodium azide.
<b>Recommended Storage:</b>	Short term store at 4°C. Long term, aliquot into single use aliquots and store at -20°C. Avoid freeze-thaw cycles and prolonged exposure to light. Store undiluted.
<b>Usage Summary:</b>	Suitable for use in flow cytometry.
<b>Uses:</b>	Flow Cytometry (Optimal dilution to be determined by the researcher)
<b>Size:</b>	100 tst
<b>Concentration:</b>	0.03 mg/ml

**Flow Cytometry Image:**



Staining of mouse splenocytes using LS-C76383 (filled histogram) or isotype control (open histogram).

**Requested From:**

Japan

Laboratory Reagent For In Vitro Research Use Only

Not for resale without prior written consent from LifeSpan BioSciences, Inc.

Created on 10/2/2014

© 2014 LifeSpan BioSciences