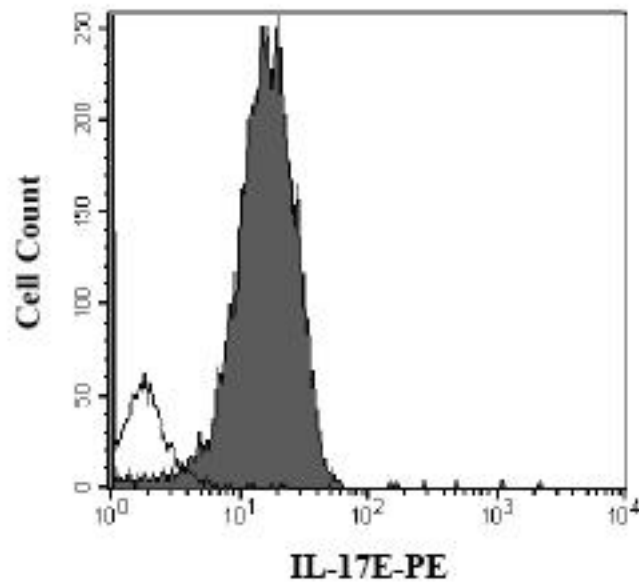


IL25 / IL17E Rat anti-Mouse Monoclonal (PE) Antibody - LS-C71027 - LSBio

CatalogID:	LS-C71027
Target:	interleukin 25 (IL25)
Synonyms:	IL25 Antibody, Interleukin 17E Antibody, Interleukin 25 Antibody, Interleukin-25 Antibody, IL17E Antibody, IL-17E Antibody, IL-25 Antibody, Interleukin-17E Antibody
Family / Subfamily:	Interleukin
Host	IL25 antibody was produced in Rat
Clonality:	Monoclonal
Isotype:	IgG2b
Conjugations:	Phycoerythrin (PE)
Immunogen Species:	IL25 / IL17E antibody was raised against Mouse
Antigen Type:	Recombinant protein
Immunogen:	IL25 / IL17E antibody was raised against e. coli-derived rmlIL-17E.
Specificity:	Recognizes mouse IL-17E.
Reactivity:	Mouse
Predicted Reactivity:	Human, Rat
Purification:	Protein G purified
Presentation:	PBS, pH 7.4, 0.1% sodium azide.
Recommended Storage:	Store at 4°C. Do not freeze.
Usage Summary:	Suitable for use in Flow Cytometry. Flow Cytometry: Neat. Use 10 ul to label 5×10^5 cells.
Uses:	Flow Cytometry (Optimal dilution to be determined by the researcher)
Size:	100 tst

Flow Cytometry Image:



Intracellular staining of Tramp-C1 cells with LS-C71027 or isotype control

Requested From:

Japan

Laboratory Reagent For In Vitro Research Use Only

Not for resale without prior written consent from LifeSpan BioSciences, Inc.

Created on 10/2/2014

© 2014 LifeSpan BioSciences