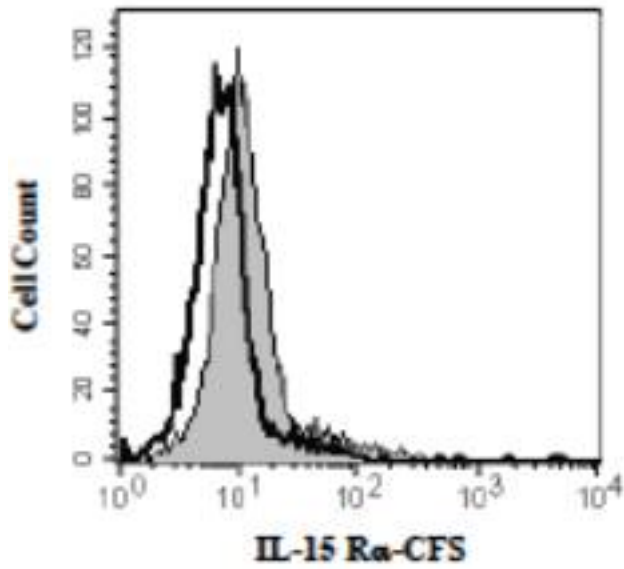


IL15RA Goat anti-Mouse Polyclonal (Extracellular Domain) (CF) Antibody - LS-C70952 - LSBio

CatalogID:	LS-C70952
Target:	interleukin 15 receptor, alpha (IL15RA)
Synonyms:	IL15RA Antibody, CD215 antigen Antibody, IL-15RA Antibody, IL-15 receptor subunit alpha Antibody, IL-15R-alpha Antibody, Interleukin 15 receptor, alpha Antibody, CD215 Antibody
Family / Subfamily:	Interleukin
Host	IL15RA antibody was produced in Goat
Clonality:	Polyclonal
Isotype:	IgG
Conjugations:	Carboxyfluorescein (CF)
Immunogen Species:	IL15RA antibody was raised against Mouse
Antigen Type:	Recombinant protein
Immunogen:	IL15RA antibody was raised against nS0-derived rmlL-15R alpha extracellular domain.
Specificity:	Recognizes mouse IL-15R alpha.
Epitope:	Extracellular Domain
Reactivity:	Mouse
Purification:	Immunoaffinity purified
Presentation:	PBS
Recommended Storage:	+4°C or -20°C, Avoid repeated freezing and thawing.
Usage Summary:	Suitable for use in Flow Cytometry. Flow Cytometry: Use 10 ul to label 10 ⁵ cells.
Uses:	Flow Cytometry (Optimal dilution to be determined by the researcher)
Size:	50 µg
Concentration:	0.1 mg/ml

Flow Cytometry Image:



EL-4 cells were stained with LS-C70952 or isotype control.

Requested From:

Japan

Laboratory Reagent For In Vitro Research Use Only

Not for resale without prior written consent from LifeSpan BioSciences, Inc.

Created on 10/2/2014

© 2014 LifeSpan BioSciences