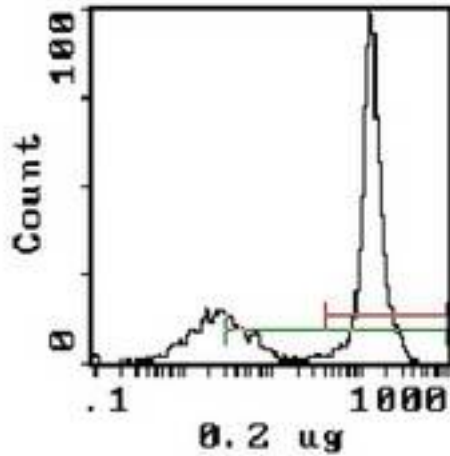


Complement C3 Mouse anti-Human Monoclonal (FITC) (6C9) Antibody - LS-C62855 - LSBio

CatalogID:	LS-C62855
Target:	complement component 3 (C3)
Synonyms:	C3 Antibody, AHUS5 Antibody, ARMD9 Antibody, Complement component C3 Antibody, CPAMD1 Antibody, Complement C3 Antibody, ASP Antibody, Complement component 3 Antibody
Host	C3 antibody was produced in Mouse
Clonality:	Monoclonal
Isotype:	IgG1
Clone Name:	6C9
Conjugations:	Fluorescein (FITC)
Immunogen Species:	Complement C3 antibody was raised against Human
Antigen Type:	Purified protein
Immunogen:	Complement C3 antibody was raised against human C3.
Specificity:	FITC Anti-Human/Mouse Complement Component C3 monoclonal antibody (Clone: 6C9) reacts with human and mouse C3 as well as the breakdown products C3b and iC3b. C3 is the most abundant complement protein in serum. C3 and its cleavage products, C3a and C3b, p.
Reactivity:	Human
Purification:	Protein G purified
Presentation:	PBS, 0.02% sodium azide, EIA grade BSA.
Recommended Storage:	Short term 4°C, long term aliquot and store at -20°C, avoid freeze-thaw cycles and prolonged exposure to light.
Uses:	Flow Cytometry (0.2 µg/10E6 cells), ELISA (Optimal dilution to be determined by the researcher)
Uses Not Recommended:	IHC - Paraffin
Size:	100 µg
Concentration:	0.1 mg/ml

Flow Cytometry Image:



Flow cytometry of Mouse Thymocytes

Requested From:

Japan

Laboratory Reagent For In Vitro Research Use Only

Not for resale without prior written consent from LifeSpan BioSciences, Inc.

Created on 10/2/2014

© 2014 LifeSpan BioSciences