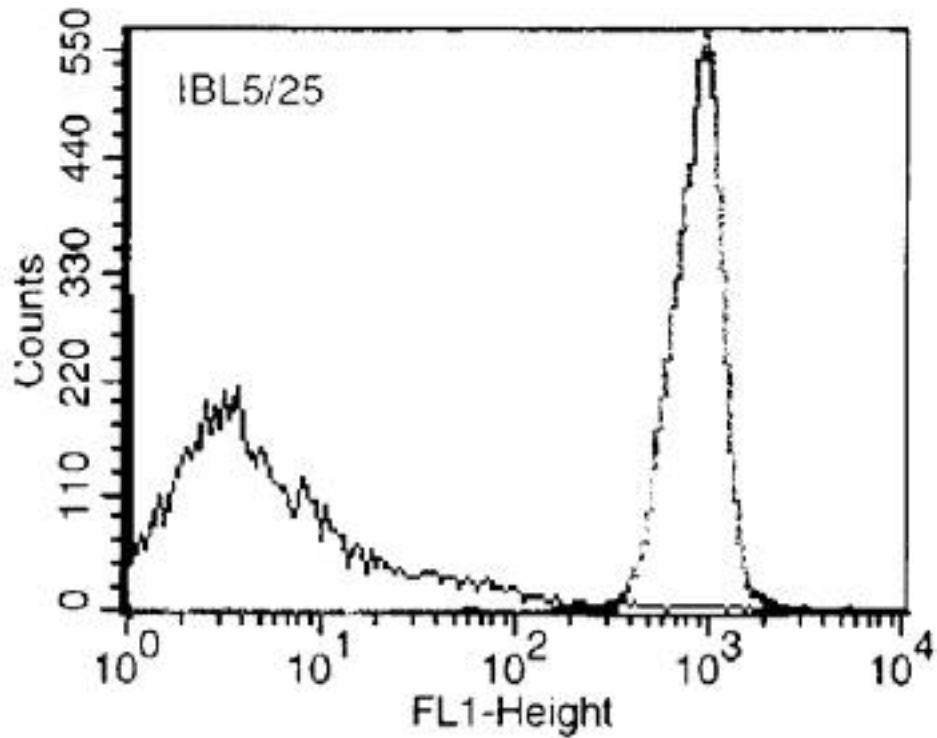


**CD45 Rat anti-Mouse Monoclonal (Biotin) (IBL-5/25) Antibody - LS-C62540 - LSBio**

<b>CatalogID:</b>	LS-C62540
<b>Target:</b>	protein tyrosine phosphatase, receptor type, C (PTPRC)
<b>Synonyms:</b>	PTPRC Antibody, B220 Antibody, CD45R Antibody, CD45 Antibody, gp180 Antibody, Leukocyte common antigen Antibody, L-CA Antibody, Leucocyte common antigen Antibody, LY5 Antibody, T200 Antibody, T200 glycoprotein Antibody, T200 leukocyte common antigen Antibody, CD45 antigen Antibody, LCA Antibody
<b>Family / Subfamily:</b>	Protein Phosphatase / R1/R6
<b>Host</b>	PTPRC antibody was produced in Rat
<b>Clonality:</b>	Monoclonal
<b>Isotype:</b>	IgG1
<b>Clone Name:</b>	IBL-5/25
<b>Conjugations:</b>	Biotin
<b>Immunogen Species:</b>	CD45 antibody was raised against Mouse
<b>Specificity:</b>	Anti-mouse CD45 monoclonal antibody detects CD45 (L-CA) which is a transmembrane phosphotyrosine phosphatase expressed on leukocytes. This mAb induces the in vitro clustering of mouse lymphocytes (both T and B cells)
<b>Reactivity:</b>	Mouse
<b>Purification:</b>	Purified
<b>Presentation:</b>	PBS, 0.02% sodium azide, EIA grade BSA.
<b>Uses:</b>	Flow Cytometry (2 µg/10E6 cells) (Optimal dilution to be determined by the researcher)
<b>Size:</b>	100 µg or 300 µg

Flow Cytometry Image:



Flow cytometry of Mesenteric Lymph Node Cells. Percentage of cells stained above control: >95%.

Requested From:

Japan

Laboratory Reagent For In Vitro Research Use Only

Not for resale without prior written consent from LifeSpan BioSciences, Inc.

Created on 10/2/2014

© 2014 LifeSpan BioSciences