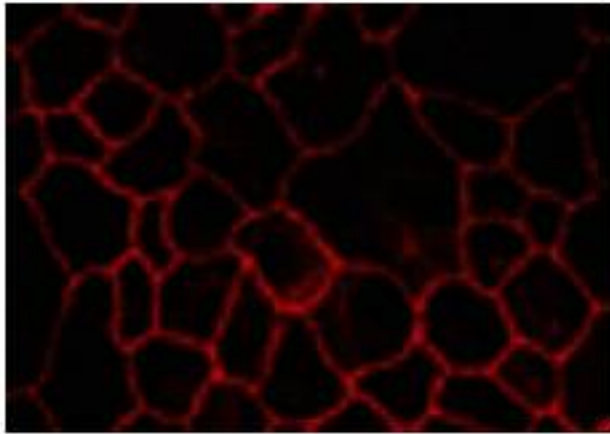


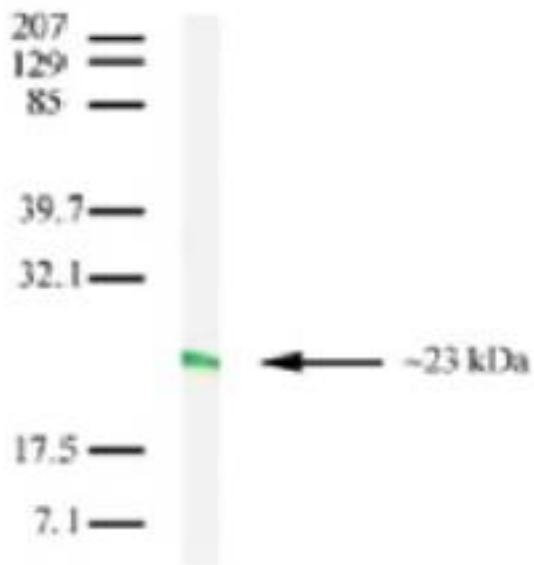
CLDN7 / Claudin 7 Rabbit anti-Human Polyclonal (C-Terminus) Antibody - LS-C6163 - LSBio	
<b>CatalogID:</b>	LS-C6163
<b>Target:</b>	claudin 7 (CLDN7)
<b>Synonyms:</b>	CLDN7 Antibody, Claudin-7 Antibody, Claudin-1 Antibody, CLDN-7 Antibody, Hs.84359 Antibody, CEPTRL2 Antibody, Claudin 7 Antibody, CPETRL2 Antibody
<b>Family / Subfamily:</b>	Claudin / not assigned-Claudin
<b>Host</b>	CLDN7 antibody was produced in Rabbit
<b>Clonality:</b>	Polyclonal
<b>Isotype:</b>	IgG
<b>Immunogen Species:</b>	CLDN7 / Claudin 7 antibody was raised against Human
<b>Antigen Type:</b>	Synthetic peptide
<b>Immunogen:</b>	CLDN7 / Claudin 7 antibody was raised against synthetic peptide derived from the C-terminal region of the human Claudin-7 protein.
<b>Specificity:</b>	Reacts with the human Claudin-7. Reactivity is confirmed with human T47D cell lysates, human and mouse breast tissues and canine MDCK cell lysates.
<b>Epitope:</b>	C-Terminus
<b>Reactivity:</b>	Human, Mouse, Dog
<b>Purification:</b>	Immunoaffinity purified
<b>Presentation:</b>	PBS, pH 7.2, 0.05% sodium azide.
<b>Recommended Storage:</b>	Long term: Add glycerol (40-50%) -20°C; Short term: +4°C
<b>Usage Summary:</b>	Suitable for use in Immunofluorescence, Western Blot and Immunohistochemistry. Immunofluorescence (Canine): 1-2 ug/ml. Western Blot: 1-2 ug/ml. Immunohistochemistry (Human, mouse): 1-2 ug/ml. Prior to staining, formalin-fixed, paraffin-embedded tissues requires heat-induced epitope retrieval (HIER) with citrate buffer, pH 6.
<b>Uses:</b>	IHC - Paraffin, Immunofluorescence (1 - 2 µg/ml), Western blot (1 - 2 µg/ml) (Optimal dilution to be determined by the researcher)
<b>Size:</b>	100 µg

**Immunofluorescence Image:**



Immunofluorescence staining of MDCK cells.

**Western Blot Image:**



Western blot analysis for Claudin-7 in T47D cell lysate

**Requested From:**

Japan

Laboratory Reagent For In Vitro Research Use Only

Not for resale without prior written consent from LifeSpan BioSciences, Inc.

Created on 10/2/2014

© 2014 LifeSpan BioSciences