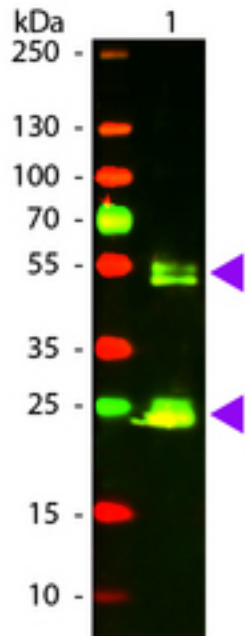


| Rat IgG Goat anti-Rat Polyclonal (Fab'2) (TR) Antibody - LS-C61501 - LSBio | |
|--|---|
| CatalogID: | LS-C61501 |
| Target: | Rat IgG |
| Host | Rat IgG antibody was produced in Goat |
| Clonality: | Polyclonal |
| Isotype: | IgG |
| Conjugations: | Texas Red (TR) |
| Modifications: | Fab'2 |
| Immunogen Species: | Rat IgG antibody was raised against Rat |
| Antigen Type: | Purified protein |
| Immunogen: | Rat IgG antibody was raised against guinea Pig IgG whole molecule. |
| Specificity: | anti-Goat Serum, Guinea Pig IgG and Guinea Pig Serum. No reaction was observed against anti-Pepsin or anti-Goat IgG F(c) |
| Reactivity: | Rat |
| Purification: | Purified IgG |
| Presentation: | 0.02 M potassium phosphate, 0.15 M sodium chloride, pH 7.2, 10 mg/ml BSA (IgG, protease free), 0.01% sodium azide. |
| Recommended Storage: | Store at 4°C. |
| Usage Summary: | Suitable for immunomicroscopy and flow cytometry or FACS analysis as well as other antibody based fluorescent assays requiring extremely low background levels, absence of F(c) mediated binding, lot-to-lot consistency, high titer and specificity. |
| Uses: | Immunofluorescence (1:500 - 1:2500), Flow Cytometry (1:2000 - 1:10000) (Optimal dilution to be determined by the researcher) |
| Size: | 500 µg |

Western Blot Image:



Western Blot of Goat anti-Rat IgG Texas Red Conjugated Antibody. Lane 1: Rat IgG. Lane 2: None. Load: 50 ng per lane. Primary antibody: None. Secondary antibody: Texas Red goat secondary antibody at 1:1000 for 60 min at RT. Block: MB-070 for 30 min at RT. Predicted/Observed size: 28 & 55 kDa, 28 & 55 kDa for Rat IgG. Other band(s): None.

Requested From:

Japan

Laboratory Reagent For In Vitro Research Use Only

Not for resale without prior written consent from LifeSpan BioSciences, Inc.

Created on 10/2/2014

© 2014 LifeSpan BioSciences