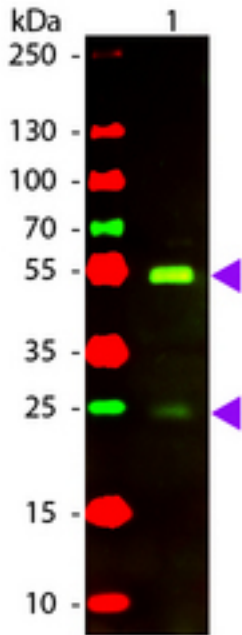


Dog IgG Fab'2 Rabbit anti-Dog Polyclonal (Fab'2) (TR) Antibody - LS-C61292 - LSBio

<b>CatalogID:</b>	LS-C61292
<b>Target:</b>	Dog IgG Fab'2
<b>Host</b>	Dog IgG Fab'2 antibody was produced in Rabbit
<b>Clonality:</b>	Polyclonal
<b>Isotype:</b>	IgG
<b>Conjugations:</b>	Texas Red (TR)
<b>Modifications:</b>	Fab'2
<b>Immunogen Species:</b>	Dog IgG Fab'2 antibody was raised against Dog
<b>Reactivity:</b>	Dog
<b>Purification:</b>	Purified IgG
<b>Reconstitution:</b>	deionized water. Possible additional volumes for resuspension: 500 µl
<b>Uses:</b>	Undetermined
<b>Size:</b>	500 µg

**Western Blot Image:**



Western Blot of Rabbit anti-Dog IgG Texas Red Conjugated Antibody. Lane 1: Dog IgG. Lane 2: None. Load: 50 ng per lane. Primary antibody: None. Secondary antibody: Texas Red rabbit secondary antibody at 1:1000 for 60 min at RT. Block: MB-070 for 30 min at RT. Predicted/Observed size: 28 & 55 kDa, 28 & 55 kDa for Dog IgG. Other band(s): None.

<b>Requested From:</b>	Japan
Laboratory Reagent For In Vitro Research Use Only	
Not for resale without prior written consent from LifeSpan BioSciences, Inc.	
Created on 10/2/2014	
© 2014 LifeSpan BioSciences	