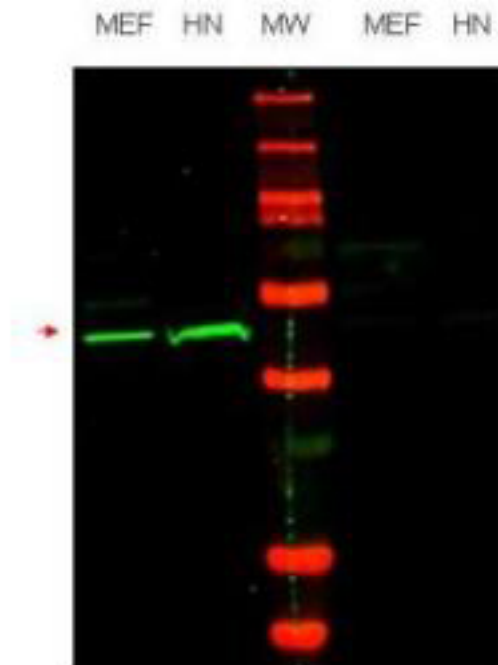


POU5F1 / OCT4 Rabbit anti-Human Polyclonal (Internal) Antibody - LS-C60139 - LSBio	
<b>CatalogID:</b>	LS-C60139
<b>Target:</b>	POU class 5 homeobox 1 (POU5F1)
<b>Synonyms:</b>	POU5F1 Antibody, Oct-4 Antibody, OCT3 Antibody, OCT4 Antibody, OTF4 Antibody, POU class 5 homeobox 1 Antibody, Octamer-binding protein 3 Antibody, Octamer-binding protein 4 Antibody, OTF-3 Antibody, Oct-3 Antibody, OTF3 Antibody
<b>Host</b>	POU5F1 antibody was produced in Rabbit
<b>Clonality:</b>	Polyclonal
<b>Immunogen Species:</b>	POU5F1 / OCT4 antibody was raised against Human
<b>Antigen Type:</b>	Synthetic peptide
<b>Immunogen:</b>	POU5F1 / OCT4 antibody was raised against synthetic peptide corresponding to an internal region of human Oct-4 protein.
<b>Specificity:</b>	human and mouse Oct-4 protein. A BLAST analysis was used to suggest additional cross-reactivity with Oct-4 from chimpanzee, macaque and horse based on a 100% homology with the immunizing sequence; and mink, dog, bovine and pig based on a 93% homology. Cross-reactivity with Oct-4 from other sources has not been determined
<b>Epitope:</b>	Internal
<b>Reactivity:</b>	Human, Monkey, Horse
<b>Purification:</b>	Immunoaffinity purified
<b>Presentation:</b>	0.02 M potassium phosphate, 0.15 M sodium chloride, pH 7.2, 0.01% sodium azide.
<b>Recommended Storage:</b>	Long term: -20°C; Short term: -20°C
<b>Usage Summary:</b>	This affinity purified antibody has been tested for use in ELISA and western blotting. Specific conditions for reactivity should be optimized by the end user. Expect a band approximately ~39 kD in size corresponding to Oct-4 by western blotting in the appropriate cell lysate or extract. This antibody is capable of detecting endogenous Oct-4.
<b>Uses:</b>	Western blot (1:1000 - 1:1500), ELISA (1:350000) (Optimal dilution to be determined by the researcher)
<b>Size:</b>	100 µg

**Western Blot Image:**



Anti-Oct4 Antibody - Western Blot. Western blot of affinity purified anti-Oct4 antibody shows detection of endogenous Oct4 in mouse embryonic fibroblast (MEF) cell lysate (lane 1) and HeLa nuclear extract (HN) (lane 2). The band at ~39 kD (arrow head) corresponds to Oct4. After transfer, the membrane was blocked with 5% BSA. Primary antibody was used at a 1:1000 dilution in PBS containing 5% BSA. The specificity of the antibody was confirmed by peptide competition which blocks reaction of the antibody with Oct4 (lanes 3 and 4, respectively).

**Requested From:**

Japan

Laboratory Reagent For In Vitro Research Use Only

Not for resale without prior written consent from LifeSpan BioSciences, Inc.

Created on 10/2/2014

© 2014 LifeSpan BioSciences