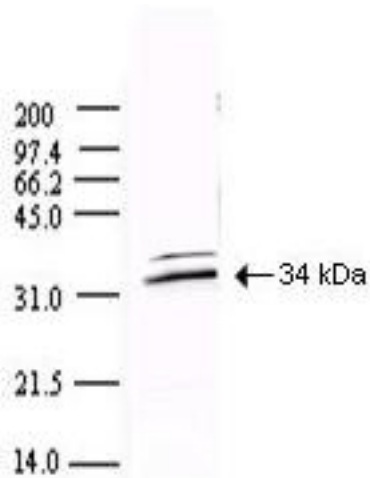


**SARS 3CL Protease Rabbit anti-SARS Coronavirus Polyclonal Antibody - LS-C59249 - LSBio**

<b>CatalogID:</b>	LS-C59249
<b>Target:</b>	SARS Coronavirus 3CL Protease
<b>Host</b>	Rabbit
<b>Clonality:</b>	Polyclonal
<b>Immunogen Species:</b>	SARS Coronavirus
<b>Specificity:</b>	SARS Coronavirus 3CL Protease. BLAST analysis was used to suggest reactivity with related Coronavirus proteins. Cross reactivity with homologs from other sources has not been determined
<b>Reactivity:</b>	SARS Coronavirus
<b>Purification:</b>	Protein A purified
<b>Reconstitution:</b>	deionized water. Possible additional volumes for resuspension: 100 µl
<b>Presentation:</b>	0.02 M potassium phosphate, 0.15 M sodium chloride, pH 7.2, 0.01% sodium azide.
<b>Recommended Storage:</b>	Store at 4°C.
<b>Usage Summary:</b>	This protein A purified antibody has been tested for use in ELISA and by western blot. Specific conditions for reactivity should be optimized by the end user. Expect a band approximately 34 kD in size corresponding to SARS 3CL Protease by western blotting in the appropriate cell lysate or extract.
<b>Uses:</b>	Western blot (1:2000 - 1:10000), ELISA (1:10000 - 1:50000) (Optimal dilution to be determined by the researcher)
<b>Size:</b>	500 µg
<b>Concentration:</b>	5 mg/ml (after resuspension)

**Western Blot Image:**



Anti-SARS CoV 3CL Protease Antibody - Western Blot. Western blot of Protein A Purified anti-SARS CoV 3CL Protease antibody shows detection of a 34-kD band corresponding to the protein. Approx. 100 ng of protein was loaded for SDS-PAGE and transferred onto nitrocellulose. The blot was incubated with a 1:5000 dilution of the antibody at room temperature for 1 h followed by detection using IRDye800 labeled Goat-a-Rabbit IgG [H&L] (diluted 1:10000). The fluorescence image was captured using the Odyssey Infrared Imaging System developed by LI-COR. IRDye is a trademark of LI-COR, Inc. Other detection systems will yield similar results.

**Requested From:**

Japan

Laboratory Reagent For In Vitro Research Use Only

Not for resale without prior written consent from LifeSpan BioSciences, Inc.

Created on 10/2/2014

© 2014 LifeSpan BioSciences