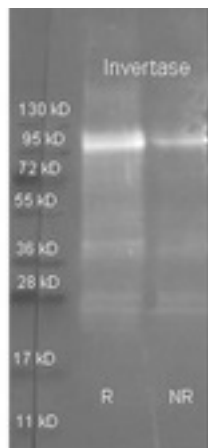


Invertase Goat anti-Candida Polyclonal (TR) Antibody - LS-C59212 - LSBio

CatalogID:	LS-C59212
Target:	Invertase
Host	Invertase antibody was produced in Goat
Clonality:	Polyclonal
Conjugations:	Texas Red (TR)
Immunogen Species:	Invertase antibody was raised against Candida
Antigen Type:	Purified protein
Immunogen:	Invertase antibody was raised against invertase [Candida].
Specificity:	Invertase [Candida]. Cross reactivity against Invertase from other sources is unknown
Reactivity:	Candida
Purification:	Purified IgG
Presentation:	0.02 M potassium phosphate, 0.15 M sodium chloride, pH 7.2, 0.01% sodium azide.
Recommended Storage:	Store at 4°C.
Uses:	Western blot, ELISA (1:10000 - 1:65000) (Optimal dilution to be determined by the researcher)
Size:	2,000 µl

Western Blot Image:



Invertase Polyclonal Antibody-Western blot. Goat anti-Invertase antibody (LS-C59212 lot 6736) was used to detect purified invertase under reducing (R) and non-reducing (NR) conditions. Reduced samples of purified target protein contained 4% BME and were boiled for 5 minutes. Samples of ~1 ug of protein per lane were run by SDS-PAGE. Protein was transferred to nitrocellulose and probed with 1:3000 dilution of primary antibody (ON 4 C in MB-070). Detection shown was using Dylight 488 conjugated Donkey anti-goat (1:10K in TBS/MB-070 1 hr RT). Images were collected using the Bio-Rad VersaDoc System.

Requested From:

Japan

Laboratory Reagent For In Vitro Research Use Only

Not for resale without prior written consent from LifeSpan BioSciences, Inc.

Created on 10/2/2014

© 2014 LifeSpan BioSciences