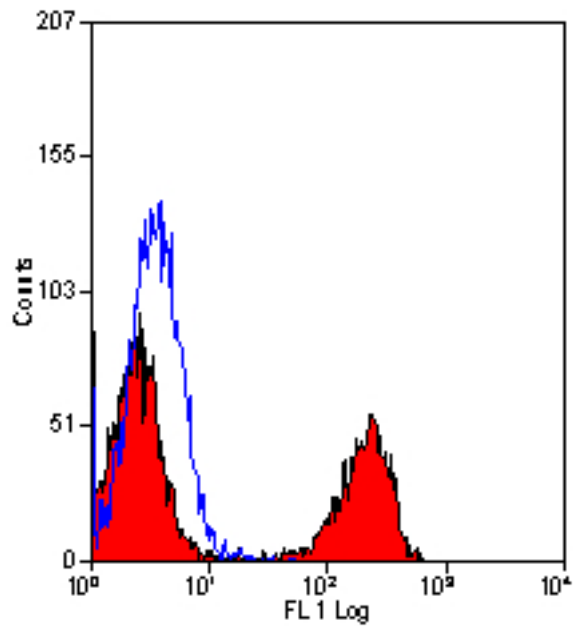


T Cells Mouse anti-Rabbit Monoclonal (FITC) (KEN-5) Antibody - LS-C58688 - LSBio	
CatalogID:	LS-C58688
Target:	T Cells
Host	T Cells antibody was produced in Mouse
Clonality:	Monoclonal
Isotype:	IgG1
Clone Name:	KEN-5
Conjugations:	Fluorescein (FITC)
Immunogen Species:	T Cells antibody was raised against Rabbit
Antigen Type:	Cells
Immunogen:	T Cells antibody was raised against rabbit Thymocytes.
Specificity:	Recognizes rabbit T lymphocytes and immunoprecipitates, a 67kD glycoprotein. This antibody was initially reported as recognizing rabbit CD5, but does not bind to rabbit CD5 transfectants. Known rabbit CD5 antibodies also show binding to most B lymphocytes, which are not labeled by this clone
Reactivity:	Rabbit
Purification:	Affinity purified
Presentation:	PBS, 0.09% sodium azide, 1% BSA.
Recommended Storage:	Long term: -20°C; Short term: +4°C. Avoid repeat freeze-thaw cycles.
Usage Summary:	Flow Cytometry: Use 10 ul of the suggested working dilution to label 10 ⁶ cells or 100 ul whole blood. Method sheets are available on request.
Uses:	Flow Cytometry (1:1) (Optimal dilution to be determined by the researcher)
Size:	100 tst
Concentration:	0.1 mg/ml

Flow Cytometry Image:



Staining of rabbit peripheral blood lymphocytes with MOUSE ANTI RABBIT T LYMPHOCYTES: FITC.

Requested From:

Japan

Laboratory Reagent For In Vitro Research Use Only

Not for resale without prior written consent from LifeSpan BioSciences, Inc.

Created on 10/2/2014

© 2014 LifeSpan BioSciences