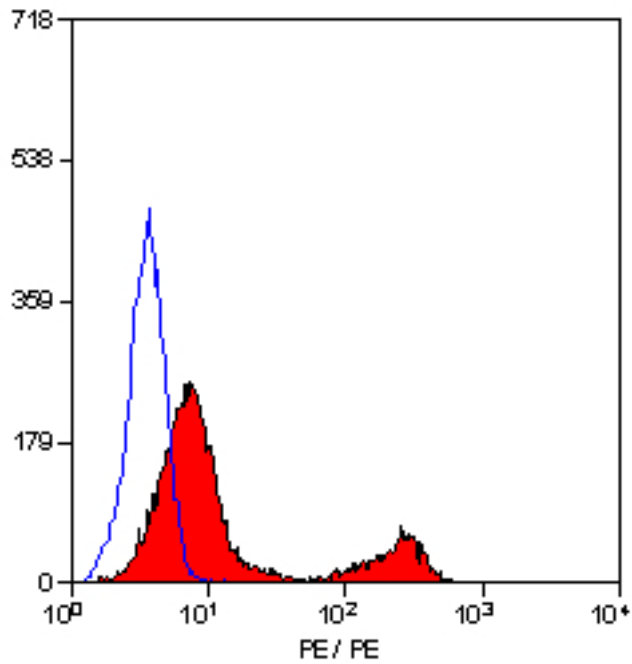


CD3 Rat anti-Mouse Monoclonal (RPE) (KT3) Antibody - LS-C58550 - LSBio

CatalogID:	LS-C58550
Target:	CD3
Host	CD3 antibody was produced in Rat
Clonality:	Monoclonal
Isotype:	IgG2a
Clone Name:	KT3
Conjugations:	R. Phycoerythrin (RPE)
Immunogen Species:	CD3 antibody was raised against Mouse
Specificity:	Recognizes the mouse CD3 antigen which is expressed by mature T cells. NB. For optimal staining incubations should be performed at room temperature
Reactivity:	Mouse
Purification:	Affinity purified
Reconstitution:	Distilled Water.
Presentation:	Lyophilized, PBS, pH 7.4, 0.09% sodium azide, 1% BSA.
Recommended Storage:	+4°C, avoid freezing
Usage Summary:	Flow Cytometry: Use 10 ul of the suggested working dilution to label 10 ⁶ cells or 100 ul whole blood. The Fc region of monoclonal antibodies may bind non-specifically to cells expressing low affinity Fc receptors.
Uses:	Flow Cytometry (1:1) (Optimal dilution to be determined by the researcher)
Size:	100 tst

Flow Cytometry Image:



Staining of mouse spleen cells with RAT ANTI MOUSE CD3 EPSILON (T3):RPE.

Requested From:

Japan

Laboratory Reagent For In Vitro Research Use Only

Not for resale without prior written consent from LifeSpan BioSciences, Inc.

Created on 10/2/2014

© 2014 LifeSpan BioSciences