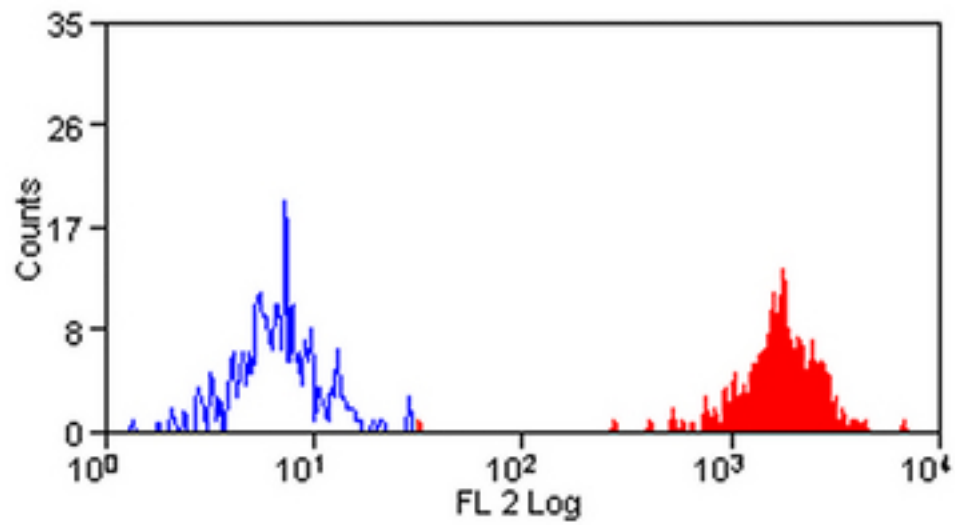


ITGB3 / Integrin Beta 3 / CD61 Mouse anti-Human Monoclonal (RPE) (Y2/51) Antibody - LS-C58171 - LSBio

CatalogID:	LS-C58171
Target:	integrin, beta 3 (platelet glycoprotein IIIa, antigen CD61) (ITGB3)
Synonyms:	ITGB3 Antibody, BDPLT2 Antibody, CD61 antigen Antibody, GT Antibody, gp3A Antibody, CD61 Antibody, GPIIIa Antibody, Integrin beta-3 Antibody
Family / Subfamily:	Integrin / not assigned-Integrin
Host	ITGB3 antibody was produced in Mouse
Clonality:	Monoclonal
Isotype:	IgG1
Clone Name:	Y2/51
Conjugations:	R. Phycoerythrin (RPE)
Immunogen Species:	ITGB3 / Integrin Beta 3 / CD61 antibody was raised against Human
Antigen Type:	Cells
Immunogen:	ITGB3 / Integrin Beta 3 / CD61 antibody was raised against pHA stimulated peripheral blood cells.
Specificity:	Recognizes CD61, a 105kD glycoprotein, which is also known as integrin beta 3 chain. This molecule associates with either the alpha IIb integrin (CD41) or the alpha V integrin (CD51) at the cell surface. CD61 is expressed on platelets and megakaryocytes in association with CD41, and on endothelial cells, monocytes, platelets and osteoclasts in association with CD51. CD61 is a receptor for fibrinogen, fibronectin, vWF, vitronectin and thrombospondin
Reactivity:	Human
Purification:	Affinity purified
Reconstitution:	Distilled Water. Possible additional volumes for resuspension: 1000 µl
Presentation:	Lyophilized, PBS, pH 7.4, 0.09% sodium azide, 1% BSA.
Recommended Storage:	+4°C, avoid freezing
Usage Summary:	Flow Cytometry: Use 10 ul of the suggested working dilution to label 1x10 ⁶ cells in 100 ul. Method sheets are available on request.
Uses:	Flow Cytometry (1:1) (Optimal dilution to be determined by the researcher)
Size:	1,000 µl

Flow Cytometry Image:



Peripheral Human Monocytes stained with Mouse anti Human CD61: RPE.

Requested From:

Japan

Laboratory Reagent For In Vitro Research Use Only

Not for resale without prior written consent from LifeSpan BioSciences, Inc.

Created on 10/2/2014

© 2014 LifeSpan BioSciences