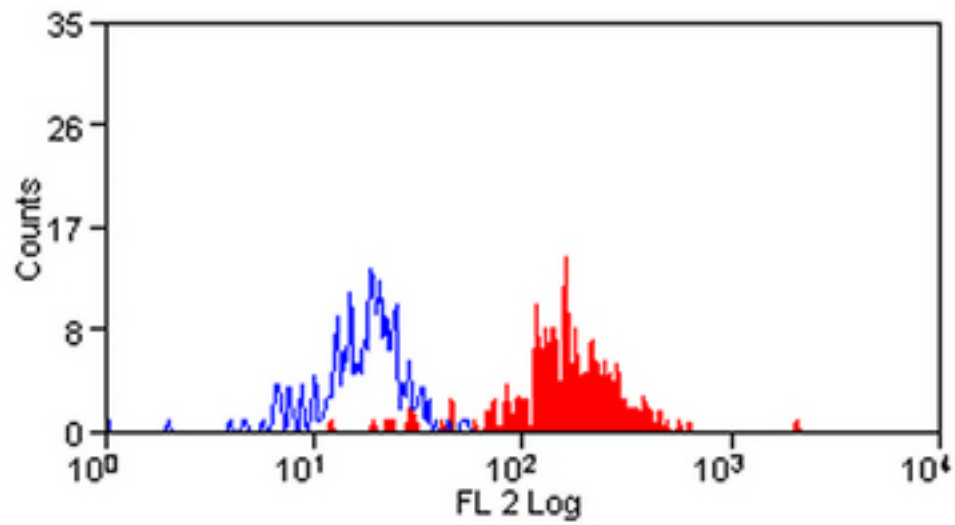


CD172A / SIRPA Mouse anti-Human Monoclonal (RPE) (15-414) Antibody - LS-C58099 - LSBio	
CatalogID:	LS-C58099
Target:	signal-regulatory protein alpha (SIRPA)
Synonyms:	SIRPA Antibody, CD172A Antibody, CD172a antigen Antibody, Inhibitory receptors shps-1 Antibody, Inhibitory receptor SHPS-1 Antibody, Macrophage fusion receptor Antibody, MyD-1 antigen Antibody, p84 Antibody, SHPS-1 Antibody, SHPS1 Antibody, SIRP Antibody, Sirp-alpha-1 Antibody, Sirp-alpha-3 Antibody, Sirp-alpha1 Antibody, MYD1 Antibody, SIRPalpha Antibody, SIRPalpha2 Antibody, BIT Antibody, MFR Antibody, MYD-1 Antibody, PTPNS1 Antibody, SHP substrate 1 Antibody, Sirp-alpha-2 Antibody
Host	SIRPA antibody was produced in Mouse
Clonality:	Monoclonal
Isotype:	IgG2a
Clone Name:	15-414
Conjugations:	R. Phycoerythrin (RPE)
Immunogen Species:	CD172A / SIRPA antibody was raised against Human
Antigen Type:	Cells
Immunogen:	CD172A / SIRPA antibody was raised against monocyte-derived dendritic cells.
Specificity:	Specific for human CD172a, also known as signal-regulatory protein alpha, a receptor-type transmembrane glycoprotein expressed on cells of myeloid origin, including granulocytes, dendritic cells (DCs), macrophages, mast cells and hematopoietic stem cells.
Reactivity:	Human
Purification:	Affinity purified
Reconstitution:	Distilled Water.
Presentation:	Lyophilized, PBS, pH 7.4, 0.09% sodium azide, 1% BSA.
Recommended Storage:	+4°C, avoid freezing
Usage Summary:	Flow Cytometry: Use 10 ul of the suggested working dilution to label 1x10 ⁶ cells in 100 ul. Method sheets are available on request.
Uses:	Flow Cytometry (1:1) (Optimal dilution to be determined by the researcher)
Size:	100 tst

Flow Cytometry Image:



Peripheral Human monocytes stained with Mouse anti Human CD172a: RPE.

Requested From:

Japan

Laboratory Reagent For In Vitro Research Use Only

Not for resale without prior written consent from LifeSpan BioSciences, Inc.

Created on 10/2/2014

© 2014 LifeSpan BioSciences