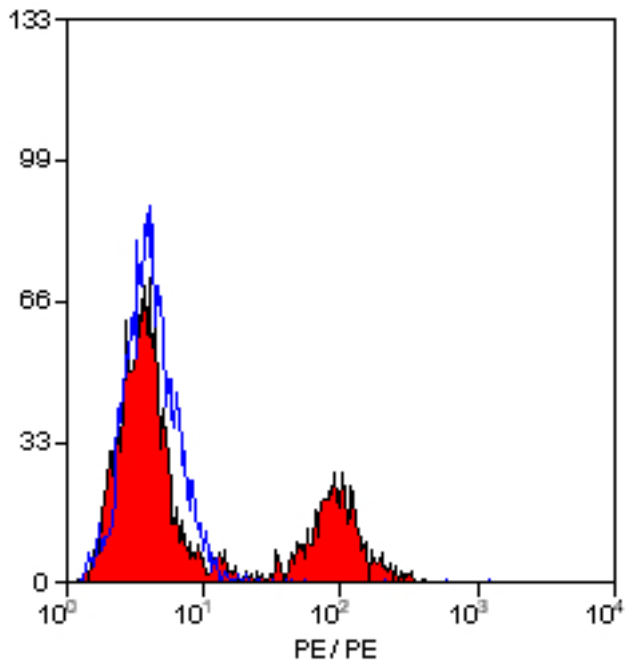


MHC Class II DQ DR Mouse anti-Sheep Monoclonal (RPE) (28.1) Antibody - LS-C57749 - LSBio	
<b>CatalogID:</b>	LS-C57749
<b>Target:</b>	MHC Class II DQ DR
<b>Host</b>	Mouse
<b>Clonality:</b>	Monoclonal
<b>Isotype:</b>	IgG1
<b>Clone Name:</b>	28.1
<b>Conjugations:</b>	R. Phycoerythrin (RPE)
<b>Immunogen Species:</b>	Sheep
<b>Immunogen:</b>	Ovine alveolar macrophages.
<b>Specificity:</b>	Recognizes a polymorphic epitope on ovine MHC class II DQ and DR molecules. In recent work, this clone was found to recognize ovine MHC II transfectants DQ - T28.1, DQ - T26.2 and DR - T31.3 but not DR - T8.1. (Ballingall, K. et al.1995). Ovine MHC class II antigens are expressed on several cell types, including B cells, activated T cells, monocytes, macrophages and dendritic cells
<b>Reactivity:</b>	Sheep, Bovine, Goat
<b>Purification:</b>	Affinity purified
<b>Reconstitution:</b>	Distilled Water.
<b>Presentation:</b>	Lyophilized, PBS, pH 7.4, 0.09% sodium azide, 1% BSA.
<b>Recommended Storage:</b>	+4°C, avoid freezing
<b>Usage Summary:</b>	Flow Cytometry: Use 10 ul of the suggested working dilution to label 10 <sup>6</sup> cells in 100 ul. Method sheets are available on request.
<b>Uses:</b>	Flow Cytometry (1:1 - 1:10) (Optimal dilution to be determined by the researcher)
<b>Size:</b>	100 tst

**Flow Cytometry Image:**



Staining of sheep peripheral blood lymphocytes with MOUSE ANTI OVINE MHC CLASS II DQ/DR: RPE.

**Requested From:**

Japan

Laboratory Reagent For In Vitro Research Use Only

Not for resale without prior written consent from LifeSpan BioSciences, Inc.

Created on 10/2/2014

© 2014 LifeSpan BioSciences