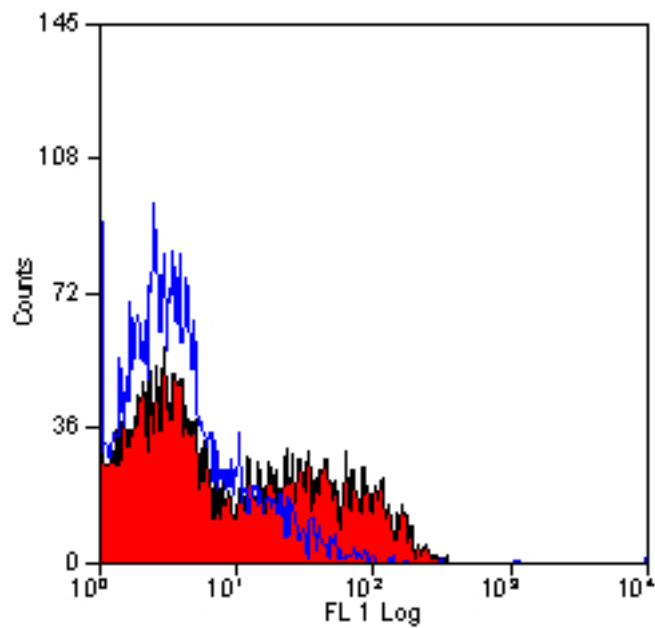


CD1w2 Mouse anti-Bovine Monoclonal (RPE) (CC20) Antibody - LS-C57650 - LSBio

CatalogID:	LS-C57650
Target:	CD1w2
Host	CD1w2 antibody was produced in Mouse
Clonality:	Monoclonal
Isotype:	IgG2a
Clone Name:	CC20
Conjugations:	R. Phycoerythrin (RPE)
Immunogen Species:	CD1w2 antibody was raised against Bovine
Specificity:	Recognizes the bovine CD1w2 cell surface antigen, a glycoprotein heterodimer of 12kD and 46kD. CD1w2 is expressed by cortical thymocytes and a minority of medullary thymocytes, with a pattern similar to antibodies of the CD1b cluster in humans
Reactivity:	Bovine, Dog, Goat, Horse, Sheep
Purification:	Affinity purified
Reconstitution:	Distilled Water.
Presentation:	Lyophilized, PBS, pH 7.4, 0.09% sodium azide, 1% BSA.
Recommended Storage:	+4°C, avoid freezing
Usage Summary:	Flow Cytometry: Use 10 ul of the suggested working dilution to label 10 ⁶ cells in 100 ul. Method sheets are available on request.
Uses:	Flow Cytometry (1:1 - 1:5) (Optimal dilution to be determined by the researcher)
Size:	100 tst

Flow Cytometry Image:



Staining of bovine peripheral blood lymphocytes with MOUSE ANTI BOVINE CD1w2: RPE.

Requested From:

Japan

Laboratory Reagent For In Vitro Research Use Only

Not for resale without prior written consent from LifeSpan BioSciences, Inc.

Created on 10/2/2014

© 2014 LifeSpan BioSciences