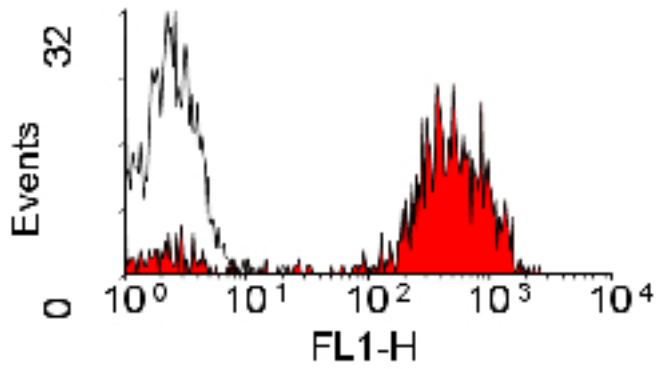


MHC Class II Rat anti-Dog Monoclonal (FITC) (YKIX334.2) Antibody - LS-C57164 - LSBio	
CatalogID:	LS-C57164
Target:	MHC Class II
Host	MHC Class II antibody was produced in Rat
Clonality:	Monoclonal
Isotype:	IgG2a
Clone Name:	YKIX334.2
Conjugations:	Fluorescein (FITC)
Immunogen Species:	MHC Class II antibody was raised against Dog
Antigen Type:	Cells
Immunogen:	MHC Class II antibody was raised against con A activated canine peripheral blood cells.
Specificity:	Recognizes canine MHC Class II and was classified at the First Canine Leucocyte Antigen Workshop. The antibody immunoprecipitates an antigen of 32/34kD and blocks the proliferation of MHC Class II dependent responses in vitro. In dogs, MHC Class II is expressed by all peripheral blood mononuclear cells
Reactivity:	Dog
Purification:	Affinity purified
Presentation:	PBS, 0.09% sodium azide, 1% BSA.
Recommended Storage:	Long term: -20°C; Short term: +4°C. Avoid repeat freeze-thaw cycles.
Usage Summary:	Flow Cytometry: Use 10 ul of the suggested working dilution to label 10 ⁶ cells in 100 ul. Method sheets are available on request.
Uses:	Flow Cytometry (1:1) (Optimal dilution to be determined by the researcher)
Size:	100 tst

Flow Cytometry Image:



Staining of canine peripheral blood lymphocytes with rat anti-canine MHC CLASS II: FITC.

Requested From:

Japan

Laboratory Reagent For In Vitro Research Use Only

Not for resale without prior written consent from LifeSpan BioSciences, Inc.

Created on 10/2/2014

© 2014 LifeSpan BioSciences