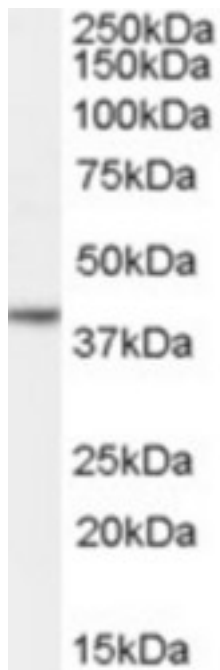


NANOG Goat anti-Human Polyclonal (Internal) Antibody - LS-C55142 - LSBio	
<b>CatalogID:</b>	LS-C55142
<b>Target:</b>	Nanog homeobox
<b>Synonyms:</b>	NANOG Antibody, Nanog homeobox Antibody, NANOGP8 Antibody, HNanog Antibody, Homeobox protein NANOG Antibody
<b>Host</b>	NANOG antibody was produced in Goat
<b>Clonality:</b>	Polyclonal
<b>Immunogen Species:</b>	NANOG antibody was raised against Human
<b>Antigen Type:</b>	Synthetic peptide
<b>Immunogen:</b>	NANOG antibody was raised against synthetic peptide C-QNQRMKSKRWQKNN from an internal region of human NANOG (NP_079141.2). Percent identity by BLAST analysis: Human, Chimpanzee, Gorilla, Orangutan, Monkey, Marmoset (100%); Gibbon, Cat, Dog, Horse (93%); Mouse, Rat, Sheep, Hamster, Bovine, Pig, Opossum (86%).
<b>Specificity:</b>	Human NANOG.
<b>Epitope:</b>	Internal
<b>Reactivity:</b>	Human, Chimpanzee, Gorilla, Orangutan, Monkey
<b>Predicted Reactivity:</b>	Gibbon, Dog, Horse
<b>Purification:</b>	Immunoaffinity purified
<b>Presentation:</b>	Tris-buffered saline, pH 7.3, 0.5% BSA, 0.02% sodium azide
<b>Recommended Storage:</b>	Store at -20°C. Minimize freezing and thawing.
<b>Uses:</b>	Western blot (1:64000) & (0.03 - 0.1 µg/ml), ELISA (1:64000) (Optimal dilution to be determined by the researcher)
<b>Uses Not Recommended:</b>	IHC - Paraffin
<b>Size:</b>	100 µg
<b>Concentration:</b>	0.5 mg/ml

**Western Blot Image:**



Antibody (0.03 ug/ml) staining of Human Ovary lysate (35 ug protein in RIPA buffer). Primary incubation was 1 hour. Detected by chemiluminescence.

**Requested From:**

Japan

Laboratory Reagent For In Vitro Research Use Only

Not for resale without prior written consent from LifeSpan BioSciences, Inc.

Created on 10/2/2014

© 2014 LifeSpan BioSciences